



PROF.DR. WALID ABDELGHAFAR

Engineering Solutions

CHAIRMAN

PROF.DR. WALID ABDELGHAFFAR

Prof. Dr. Walid Abdelghaffar is a professor in Mechanical engineering, Faculty of Engineering, Alexandria University, with 28 years of experience involved in the most iconic projects in different industries in Egypt and Middle East, his wide experience covers industrial facilities and solutions, healthcare facilities, residential projects, commercial buildings, administration buildings, infrastructure and Maritime industry and studies.

Prof. Dr. Abdelghaffar has experience of both industrial and research environments. Research, training and consultation conducted shows a capacity to deal with novel problems and find an effective solution for them, with understanding of the implications of the solution formed.

REGISTRATIONS/AFFILIATIONS:

- Professor, Faculty of Engineering, Alexandria University, EGYPT
- Member of the Egyptian Engineers Syndicate
- Certified Mechanical Consultant - Egyptian Syndicate of Engineers
- Member of SAE, USA.
- Previous Board Member of Egyptian Engineers Syndicate, Alexandria, EGYPT
- Previous Consultant for Minister of Housing, Utilities and Urban Development, EGYPT
- Previous Consultant for Minister of Transportation, EGYPT
- Previous Head of the Suez Canal Region Development Project Technical Secretariat
- Previous General Secretary for National Committee for trade facilitation in EGYPT
- Previous Member of Supreme Council for ports in EGYPT
- Previous Member of Alexandria Port board in EGYPT
- Previous Member of General Authority for Economic Zone North-West Gulf of Suez (SEZone) board in EGYPT.
- Previous Consultant of Alexandria University Hospitals



About us

ProMEP a Consultation Company, providing its quality services to customers in the Middle East and Africa in Engineering studies and design.

ProMEP was established back in 2011, and since then it has witnessed steady growth in terms: of number of partners, products, customers/industries served, employees, and revenue.

ProMEP was established to provide consulting services for the design; engineering solutions, site supervision, and project management of project systems and facilities that assure client requirements are accurately interpreted into functional, economical, and aesthetically pleasing projects.

ProMEP enables you to achieve your project goals - in a broad range of market sectors including industrial facilities, mixed-use complexes, hotels, residential towers, infrastructure utilities, airports, hospitals, recreational, tourist, educational buildings, storage facilities, oil & gas facilities and water / waste water treatment plants.

ProMEP relies on the proven skills of its qualified engineers who, over the past years of consultancy services expertise to the business, lead the company as it establishes itself as a high-quality consultant firm.

ProMEP by working closely with the client will develop each project from initial concept through design and site management to final commissioning, testing, commissioning, and adjusting of systems and maintenance. Attention to details, technical excellence and a total quality approach are taken with us wherever we go, to whatever type of the project

ProMEP will continue to build on its reputation for quality performance and delivery to meet the challenge and opportunities of the future based on the international standards.

By extending quality support to our partners, **ProMEP** has transferred knowledge and experience to our partners in order to help them to grow their business, and hence achieving targets.

Mission

Our goal is to provide the best Engineering designs and project management with the greatest service possible according to the international standards, maintaining our dedication to the insert molding technology in our designs. We will continue to refine our quality, expand our capabilities, increase our efficiency, and elevate the superior level of client's service we now provide to improve the standard of excellence we have set in the designs.

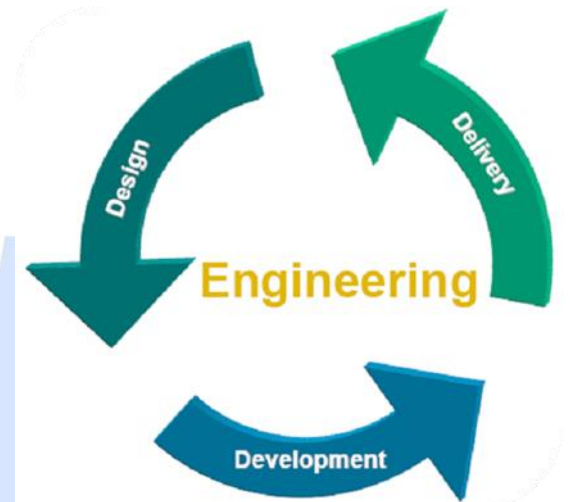
Vision

To be premier international Engineering consultant especially for industrial and health facilities.

Clients and partners will see us as integral to their success. We are anticipating their needs and deliver on every commitment we make.

People will be proud to work at **ProMEP**. We are creating opportunities and rewarding success.

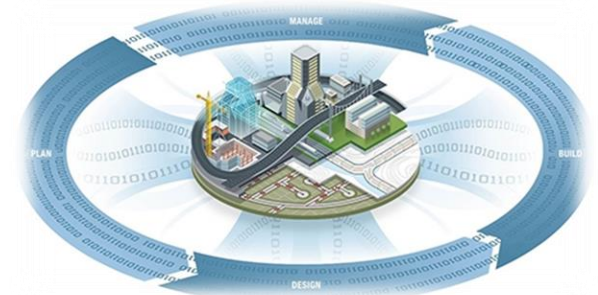
Communities will regard us as responsible and responsive. We are integrating global and local perspectives, promoting sound management of resources, and contributing to a better quality of life.



Services

As specialists in Engineering systems and their design and studies, **ProMEP** effectively plans and designs solutions that fulfill project requirements while minimizing capital and operational costs. The firm vast experience and diverse capabilities in this field assures each project is properly planned when completed.

ProMEP Engineering services embody client requirements, advanced technology and environmentally sustainable design.



Scope of Services

Feasibility study of:

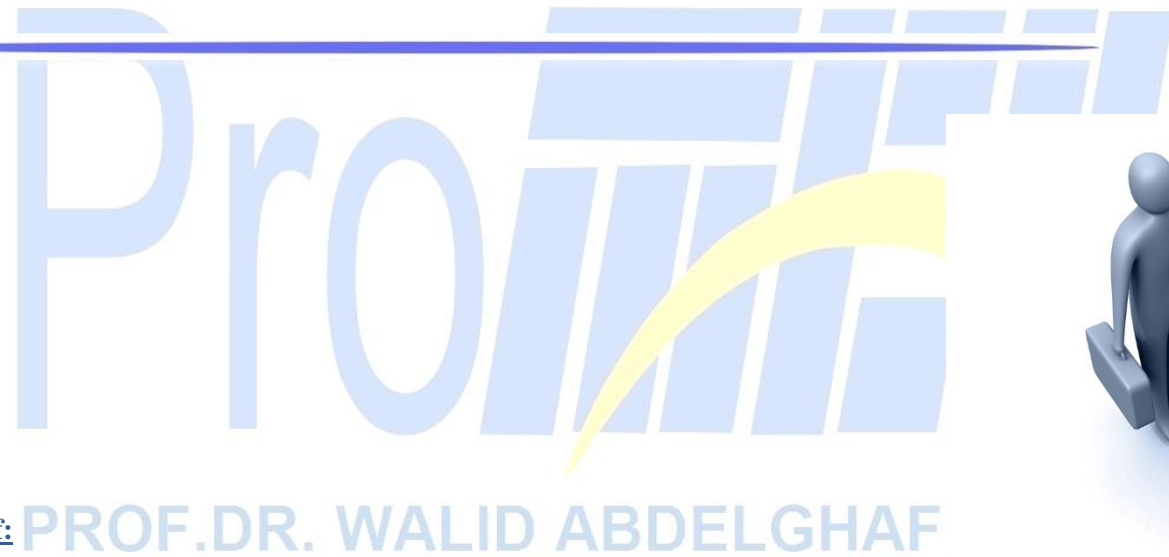
- ✓ Pre-feasibility study
- ✓ Feasibility study

Factory layout

- ✓ Conceptual design
- ✓ Factory layout

Electrical systems of:

- ✓ MV Systems
- ✓ LV Systems
- ✓ Electrical power system
- ✓ Electrical lighting system
- ✓ Earthing protection systems.
- ✓ Lightning System
- ✓ façade lighting system



Light current systems of:

- ✓ Fire alarm system
- ✓ Data system
- ✓ Telephone system.
- ✓ Public address system.
- ✓ CCTV system
- ✓ Access control systems.
- ✓ MATV system.
- ✓ Parking System

Control system of:

- ✓ BMS system
- ✓ EMS system

Mechanical systems of:

- ✓ Firefighting system
- ✓ HVAC system
- ✓ Drainage system
- ✓ Water supply system
- ✓ Storm system

Vertical systems of:

- ✓ Elevators system
- ✓ Dock leveler

Piping systems of:

- ✓ Air system
- ✓ Industrial steam system
- ✓ Clean steam piping system
- ✓ Purified water system
- ✓ Water for injection system
- ✓ Industrial chilled water system
- ✓ Potable water system



- ✓ Industrial gases system
- ✓ Industrial drain system

Main planets system of:

- ✓ Industrial Water treatment station
- ✓ Water treatment station
- ✓ Industrial wastewater treatment
- ✓ wastewater treatment

Infrastructure systems of:

- ✓ Storm system
- ✓ Firefighting system
- ✓ Drainage system
- ✓ Water supply system
- ✓ Irrigation system
- ✓ Electrical power system
- ✓ Lighting system
- ✓ Data system
- ✓ CCTV system

Special design system of:

- ✓ Heat exchanger design
- ✓ Stress analysis
- ✓ Thermal heat analysis
- ✓ CFD work
- ✓ Tank design
- ✓ Equipment design



Civil and Architectural Design of:

- ✓ Civil work design
- ✓ Architecture work design
- ✓ Interior design
- ✓ Render design

Process Design of:

- ✓ Process P&ID
- ✓ Process PFD
- ✓ Process equipment's specifications
- ✓ Process equipment's selection

Financial system of

- ✓ Factory ERP system (ProMEP Software)

Environmental studies of:

- ✓ Environmental studies
- ✓ EIA studies

License services

- ✓ Building license
- ✓ Factory operation license
- ✓ Civil defense license
- ✓ Health committee approval
- ✓ Industrial development authority license
- ✓ Water authority approval
- ✓ Electrical authority approval
- ✓ Environmental ministry approval



Deliverables

ProMEP provides the following documents as part of the design and project management process for various.

Types of projects:

- Design analysis reports, drawings, and calculation sheets.
- Tender drawings, bills of quantities, specifications, contract conditions and tender procedures plan.
- Tender analysis (Technical analysis, financial analysis, and recommendations).
- Project management plan
- Project testing and commissioning
- Project financial and administration systems



ProMEP Activities

Project Services

- Green Buildings
- Smart home buildings
- Electrical power distribution in buildings, lighting, telephone, sound, security systems (CCTV and access control systems) and all other light current systems
- Heating, Ventilation and Air Conditioning (HVAC)
- Plumbing systems
- Life safety systems including fire alarm, fire protection and smoke evacuation systems
- Building Management Systems (BMS) for intelligent buildings
- Surveillance and intrusion protection systems
- Vertical transportation
- Interactive multimedia networks
- Data networks



Electrical

- Electrical power generation, transmission and distribution
- MV/LV Electrical Substations and Networks
- Standby Diesel Generator Sets.
- Normal & Emergency Power Supply and Distribution Networks
- Interior & Exterior Lighting Installations
- Power Outlets and Wiring Accessories
- Earthing and Lightning Protection Systems
- Infrastructure electrical systems



Low Current

- Fire Detection and Alarm System
- Telecommunication System
- Public Address and Sound system
- Security Systems including CCTV
- Access control systems
- MATV System
- Intercom System
- Parking control system
- Master Clock System
- BMS
- Intrusion system
- KNX



HVAC

- Comfort Heating and Cooling
- Refrigeration.
- Building Management System (BMS)
- Kitchen And Laundry Ventilation
- Clean Rooms Application
- Industrial Ventilation
- Cold stores
- Chilled water systems



Fire Fighting

- Fire Fighting Network
- Automatic Fire fighting systems
- Manual Firefighting system
- Aerosol Systems
- Special Fire Systems For Extra Hazardous Areas
- Smoke management system
- Evacuation plans
- Fire risk assessments
- Oil and gas cooling systems



Plumbing

- Drainage System
- Water Supply system
- Central water heating system
- Storm system
- Natural gas System
- Fuel System
- Compressed Air system
- Medical gases
- Solar heating system



PROF.DR. WALID ABDELGHAFAR

Infrastructure & Utility Systems

- Infrastructure and utility systems
- Electrical power generation
- Electrical power distribution networks
- Street and parking lighting
- MV/LV electrical substations
- Roadway and area lighting
- Communication networks
- Potable water networks
- Sewage water networks
- Storm water networks
- Fire Fighting water networks
- Irrigation networks
- Chilled water networks
- District cooling system
- Natural gas network
- Industrial wastewater treatment
- Edible oils wastewater treatment
- Mineral oils wastewater treatment
- Industrial Wastewater treatment
- Tanning wastewater treatment
- Sewage wastewater treatment
- Seawater desalination by membrane



Industrial Systems

- Factory layout and process design
- Refrigeration / Ammonia Cold Storage systems
- Service piping for industrial applications (pure media systems, compressed air, steam, waste water systems etc.)
- Piping and tanks for petroleum and chemical projects
- Process control and instrumentation
- SCADA and PLC systems
- Mechanical design systems for machines
- Process machines and tanks design



Project Management

- Using the latest software in developing, & implementing plans and programs.
- Hiring, and using professional and specialized engineers
- Time management & cost control through preparing schedules, flow charts, follow-up, and updating.
- Project's Revenue and cost control.
- Project evaluations



Consultation and Report

- Feasibility studies.
- Preparing marketing feasibility studies and identifying marketing, and selling opportunities.
- Preparing engineering, productivity, & technical feasibility studies of projects to ensure quality and safety.
- Preparing economical and financial feasibility study and development of profitability indicators & return on investment.
- Preparing environmental and legal feasibility study to ensure difficulties and obstacles avoiding.
- Value engineering and cost analysis



Site Supervision

- Technical supervision.
- Specification and quality control.
- Quantity survey, reviewing, and approval.
- Initial and final hand-over.
- Projects test, commissioning and start up



Marine & Coastal

- Feasibility studies
- Heritage consultancy
- Acoustics, noise & vibration consultancy
- Carbon management
- Development infrastructure
- Marine & coastal development
- Mechanical engineering
- Pipeline & subsea engineering
- Policy planning
- Procurement & supply chain consultancy
- Supply chain management
- Utility services



Energy

- Energy efficiency and carbon management
- Energy management systems
- Energy planning, environmental and economics
- Transmission and distribution (T&D)
- Wind Energy (Power & Renewable)
- Solar Energy (Power & Renewable)
- Oil & Gas process and planets



Environment

- Air quality
- Alternative delivery solutions
- Corporate advisory & sustainability services
- Environmental, health and safety management
- Environmental Impact assessment studies (EIA)
- Remediation services and site restoration
- Specialty and emerging technologies
- Waste services
- Water and natural resources



Automotive

- Supply chain management.
- Vehicles service center design
- Vehicles service center managements
- Vehicle spare parts production lines
- Diesel Generator Sets
- Light and heavy trucks
- Tractors
- Cranes



Food industries

- Dairy factories as milk, yoghurt, white cheese, Edam cheese, rayeb, hard cheese, ghee.
- Processing equipment's
- Dairy filling machines
- Design of Processed cheese factories
- Design of beverage lines including processing equipment's and filling lines
- Water treatment for dairy and beverage products.
- Tomato paste processing and filling lines.
- Jam processing and filling lines.



- Vertical Transportation Systems
- Swimming Pools design
- Central Laundries design
- Central Kitchens design
- Workshops Layouts and Equipment.
- Special Airport Systems.
- Transportation Studies
- Paper production process



Projects

ProMEP enables you to achieve your project goals - in a broad range of market sectors including industrial facilities, mixed-use complexes, hotels, residential towers, infrastructure utilities, airports, hospitals, recreational, tourist, educational buildings, storage facilities, oil & gas facilities, solar energy, energy management, water / waste water and project management.





PROF.DR.

Pharmaceutical Industries



ULTIMATE PHARMA FACTORY

Project Data

The project comprises of total area 17000 m2 which is specialized in production of pharmaceutical sterile products

Location

Alexandria, Egypt.

Buildings

Total area 17000 m2.

Field of Work

Electro-Mechanical Consultant and design of:

- Electrical systems, Light current systems
- Mechanical systems (HVAC, Plumbing, Firefighting)
- Pure Media Piping systems (Pure steam, Purified water, Water for injection)
- Industrial Piping systems (Steam system, Chilled water system, City water cooling system, air system)
- Special systems (Elevators, Earthing system, Industrial waste water treatment station, water treatment station, store racking system, Partition system)

Project Management

- Project time schedule
- Project Cash Flow.

Supervision

YES



LEVEN FACTORY

Project Data

The project comprises of total area 2800 m2 which Specialized In production of Cream, Hair gel, and shampoo and hair oil.

Location

Alexandria, Egypt

Buildings

Total area 2800 m2.

Field of Work

Electro-Mechanical Consultant and design of:

- Electrical systems, Light current systems
- Mechanical systems (HVAC, Plumbing, Firefighting)
- Industrial Piping systems (Steam system, Chilled water system, City water cooling system)
- Special systems (Elevators, Earthing system, Industrial waste water treatment station)

Supervision

YES

Pharmaceutical Industries



PFIZER EGYPT

Project Data	a new facility for storage and a new receiving area
Location	Almaza, Cairo, Egypt.
Buildings	A new facility for storage and a new receiving area.
Field of Work	<p>Firefighting and Alarm Systems review and auditing for the Factory,</p> <p>Electro-Mechanical Consultant and design of:</p> <ul style="list-style-type: none"> - Electrical systems, Light current systems - Mechanical systems (HVAC, Plumbing, Firefighting)
Supervision	NO.



MULTICARE EGYPT FOR PHARMACEUTICAL INDUSTRIES

Project Data	a new factory of pharmaceutical for solid, semisolid and eye drop products
Location	Plot 39, 3 rd Settlement, Industrial Zone, New Cairo, Egypt.
Buildings	a new factory of pharmaceutical for Soft solid gelatin and eye drops products
Field of Work	<p>Conceptual Design</p> <ul style="list-style-type: none"> - Personnel Flow - Material Flow - Pressure and Class Area <p>Electro-Mechanical Consultant and design of:</p> <ul style="list-style-type: none"> - Electrical systems, Light current systems - Mechanical systems (HVAC, Plumbing, Firefighting) - Pure Media Piping systems (Pure steam, Purified water, Water for injection) - Industrial Piping systems (Chilled water system, City water cooling system) - Special systems (Earthing system)
Supervision	YES



PHILEOPHARMA-ELSDAT INDUSTRIAL CITY, EGYPT

Project Data Expert in animal nutrition since 1988. The project area is About 12400 m2. The project is a complex of pharmaceutical Industries like Veterinary medicines and pharmaceutical. factory

Location Sadat Industrial City- Egypt.

Buildings The project area is about 12400 m2.

Field of Work Electro-Mechanical Consultant and design of:

- Electrical systems, Light current systems
- Mechanical systems (HVAC, Plumbing, Firefighting)
- Industrial Piping systems (Chilled water system, City water cooling system)
- Special systems (Elevators, Earthing system, Industrial waste water treatment station, water treatment station)

Process works for production lines in animal nutrition

- Process piping system
- Process Tanks design
- Process equipment's URS

Supervision YES.

ATCO PHARMACEUTICALS FACTORY

Project Data ATCO Pharma Company is preparing for An extension And upgrading project located in Qusena industrial city, Egypt.

Location QUSENA, Egypt.

Buildings ATCO Pharma Company Extension.

Field of Work Conceptual Design

- Personnel Flow
- Material Flow
- Pressure and Class Area

Electro-Mechanical Consultant and design of:

- Electrical systems, Light current systems
- Mechanical systems (HVAC, Plumbing, Firefighting)
- Industrial Piping systems (Chilled water system, City water cooling system)
- Special systems (Elevators, Earthing system, store racking system)

Supervision NO



MINA PHARM 2 - PHARMACEUTICAL COMPANY

Project Data MINAPHARM ranks among the leading pharmaceutical companies In Egypt and the Middle East. The current project is a new warehouse for MINA PHARM2

Location 10th of Ramadan Industrial City, EGYPT
Buildings MINAPHARM new Store
 MINAPHARM Sterile Area for biological Project factory

Field of Work MINAPHARM new Store, Electro-Mechanical Consultant and design of:

- HVAC, Fire Fighting system

MINAPHARM Sterile Area for biological Project factory, Electro-Mechanical Consultant and design of:

- Electrical systems, Light current systems
- Mechanical systems (HVAC, Plumbing, Firefighting)
- Pure Media Piping systems (Pure steam, Purified water, Water for injection)
- Industrial Piping systems (Chilled water system, City water cooling system, air system)
- Special systems (Earthing system)

Supervision NO.



EGMED PHARMA

Project Data EGMED –pharma is a manufacturing company In production of pharmaceutical products in Egypt.

Location Borg Al Arab, Alexandria, Egypt.

Buildings EGMED Pharma is a company specialized in Pharmaceutical products.

Field of Work Conceptual Design

- Personnel Flow &Material.
- Pressure and Class Area

Electro-Mechanical Consultant and design of:

- Electrical systems, Light current systems
- Mechanical systems (HVAC, Plumbing, Firefighting)
- Pure Media Piping systems (Pure steam, Purified water, Water for injection)
- Industrial Piping systems (Chilled water system, City water cooling system, air system)
- Special systems (Elevators, Earthing system, Industrial waste water treatment station, water treatment station, store racking system, Partition system)

Process works for production lines in animal nutrition

- Process piping system
- Process Tanks design

Project Management

- Project time schedule
- Project Cash Flow.

Supervision YES

Pharmaceutical Industries



PIONEER PHARMACEUTICAL INDUSTRIES COMPANY

Project Data PIONEER PHARMACEUTICAL INDUSTRIES COMPANY is a Private Egyptian shareholding pharmaceutical company. Pioneer Pharma designed to be one of the first companies in the Middle East specialized in producing and marketing almost all antibiotic products strictly following the most advanced quality standards and regulatory excellence to be able to complete in local, national & international markets as it is committed to be a market leader in the pharmaceutical industry through continuous development, innovation and expansion in global health care.

Location 10th of Ramadan, EGYPT

Buildings It is a Private Egyptian shareholding pharmaceutical company in

Field of Work Electro-Mechanical Consultant and design of:

- Electrical systems, Light current systems
- Mechanical systems (HVAC, Plumbing, Firefighting)
- Pure Media Piping systems (Pure steam, Purified water, Water for injection)
- Industrial Piping systems (Chilled water system, City water cooling system)

Supervision YES



BIOGENERIC PHARMA S.A.E

Project Data Biogeneric Pharma S.A.E (BGP) is a bio-pharmaceutical manufacturing company specialized in the development, production And marketing of “off Patent” biotech drugs to improve the quality of lives. BGP has established platforms of technologies in genetic engineering therapeutic proteins by using its and collaborative advanced proprietary biochemistry, molecular & cell biology to challenge Life-threatening diseases such as Hepatitis C and Cancer.

Location 10th Ramadan City, Egypt.

Buildings Biogeneric Pharma S.A.E (BGP) is a bio-pharmaceutical manufacturing

Field of Work Electro-Mechanical Consultant and design of:

- Electrical systems, Light current systems
- Mechanical systems (HVAC, Plumbing, Firefighting)
- Pure Media Piping systems (Pure steam, Purified water, Water for injection)
- Industrial Piping systems (Steam system, Chilled water system, City water cooling system, air system)
- Special systems (Elevators, Earthing system, Industrial waste water treatment station)

Supervision YES (TP1)

Pharmaceutical Industries



AMICO FACTORY

Project Data

The project comprises of total area 3200 m² which is specialized in production of pharmaceutical sterile products

Location

Borg El Arab, Alexandria

Buildings

Total area 3200 m² which is specialized in Syringes.

Field of Work

Conceptual Design

- Personnel Flow & Material Flow
- Pressure and Class Area

Electro-Mechanical Consultant and design of:

- Electrical systems, Light current systems
- Mechanical systems (HVAC, Plumbing, Firefighting)
- Industrial Piping systems (Chilled water system, City water cooling system, air system)
- Special systems (Elevators, Earthing system, Industrial waste water treatment station, water treatment station, store racking system, Partition system)

Project Management

- Project time schedule
- Project Cash Flow.

Supervision

YES



PHARCO AMRIYA PHARMACEUTICALS

Project Data 'Amriya Pharmaceutical Industries is the third private Egyptian shareholding pharmaceutical companies, established in 1984 and started production in 1989. 'Amriya Pharmaceutical Industries was acquired by Pharco Corporation in 2002.

Location

'Amriya, Alexandria, Egypt.

Buildings

Pharmaceutical Industry in Amriya.

Field of Work Factory; Electro-Mechanical Consultant and design of:

- Firefighting and Alarm Systems for the factory

New Warehouse, Electro-Mechanical Consultant and design of:

- Electrical systems, Light current systems
- Mechanical systems (HVAC, Firefighting)

Supervision

Fire Fighting – YES

New Warehouse, NO

Pharmaceutical Industries



NOVA PHARMA

Project Data NOVA PHARMA provides Vaccine for veterinary

Location Sadat City, Egypt.

Buildings NOVA PHARMA provides Vaccine for veterinary.

Field of Work Electro-Mechanical Consultant and design of:

- Electrical systems, Light current systems
- Mechanical systems (HVAC, Plumbing, Firefighting)
- Pure Media Piping systems (Pure steam, Purified water, Water for injection)
- Industrial Piping systems (Steam system, Chilled water system, City water cooling system, air system)
- Special systems (Elevators, Earthing system, Industrial waste water treatment station, water treatment station, store racking system, Partition system)

Supervision YES.



MARIZ PHARMA

Project Data MARIZ Pharma is one of pharmaceutical manufacturing company specialized in the development, production of pharmaceutical products .

Location 10th Ramadan City, Egypt.

Buildings MARIZ Pharma pharmaceutical manufacturing

Field of Work Electro-Mechanical Consultant and design of:

- Electrical systems, Light current systems
- Mechanical systems (HVAC, Plumbing, Firefighting)
- Pure Media Piping systems (Pure steam, Purified water, Water for injection)
- Industrial Piping systems (Steam system, Chilled water system, City water cooling system, air system)
- Special systems (Elevators, Earthing system, Industrial waste water treatment station)

Supervision NO

Pharmaceutical Industries



MANSOUR SULTAN ALNEMI, PHARMACEUTICAL INDUSTRY

Project Data	The project comprises of total area 6000 m2 which is specialized in production of pharmaceutical products.
Location	QATAR
Buildings	Total area 6000 m2.
Field of Work	Electro-Mechanical Consultant and design of: - Electrical systems, Light current systems
Supervision	NO



INTRAPHARMA FACTORY

Project Data	The project comprises of the total area 16340 m2, distributed on (3 floors Administration, 2 floors production, and 1 floor storing ware house) buildings.
Location	Borg el Arab – Alexandria- Egypt.
Buildings	Total area 16340 m2, (3 floors Administration, 2 floors production, 1 floor) Storing ware house buildings.
Field of Work	Electro-Mechanical Consultant and design of: Mechanical systems (HVAC) Industrial Piping systems (Steam system, Chilled water system, City water cooling system, air system)
Supervision	NO.

Pharmaceutical Industries



PHARCO B PHARMACEUTICALS

Project Data Pharco B International is a private Egyptian shareholding pharmaceutical company created to exclusively produce Cephalosporin antibiotics for the local market and for Export. PBI has about 1200 employees

Location Borg el Arab, Alexandria, Egypt.
Buildings Pharco B International in Borg el Arab, Alexandria, Egypt.

Field of Work Electro-Mechanical Consultant and design of:

- Firefighting and Alarm systems.
- Smoke management system

Supervision YES.



HEALTH LINE COMPANY - DISINFECTANTS FACTORY

Project Data The project comprises of total area 5000 m2 which is specialized in in production of Disinfectants
Location 6th of October, Egypt.

Buildings The project comprises of total area 5000 m2.

Field of Work Electro-Mechanical Consultant and design of:

- Electrical systems, Light current systems
- Mechanical systems (HVAC, Plumbing, Firefighting)

Supervision NO.

Pharmaceutical Industries



VIG (VETERINARY INVESTMENT GROUP) PHARMACEUTICALS

Project Data	VIG (VETERINARY INVESTMENT GROUP) is one of The biggest pharmaceutical factory in Borg al Arab
Location	Borg el Arab, Alexandria, Egypt.
Buildings	VIG (VETERINARY INVESTMENT GROUP) Is a pharmaceutical factory.
Field of Work	Electro-Mechanical Consultant and design of: - Firefighting and Fire Alarm systems.
Supervision	NO.



ANDALOUS PHARMACEUTICALS

Project Data	AL Andalous pharmaceutical Company is One of the market leader pharmaceutical companies in Egypt with the highest growth level which serves many therapeutic areas.
Location	6 th of October, Cairo, Egypt.
Buildings	AL Andalous pharmaceutical Company in 6th Of October, Cairo, Egypt.
Field of Work	Electro-Mechanical Consultant and design of: - Firefighting and Fire alarm systems.
Supervision	YES.

Pharmaceutical Industries



EGYPTIAN INTERNATIONAL PHARMACEUTICAL INDUSTRIES COMPANY (EIPICO)

Project Data **EIPICO** was established in Tenth of Ramadan City In 1980. EIPICO is considered one of the biggest Pharmaceutical Company in Egypt and Middle East.

Location Buildings 10th of Ramadan, EGYPT
 EIPICO is the Leading Egyptian Pharmaceutical Company, In Production, by Units.
 It produces 400 Pharmaceutical Products Covering 25 therapeutic classes.

Field of Work **Electro-Mechanical Consultant and design of:**

- Firefighting and Alarm systems.
- Smoke management system

Supervision YES.



SAFE PHARMACEUTICALS

Project Data the company covered area is about 9000 square feet with double story building. In ground floor tablet Liquid Department Raw material store and packing material stores located. First floor consists of Liquid injectable area psychotropic tablet department and general capsule area. Second floor is dedicated to cephalosporin Area products. Dry powder cephalosporin injectable Dry syrups and capsules departments. On the roof 3 A air handling units are installed while water treatment plants containing R.O. Plant a later distilled water plant and DI water plants exists the whole distilled water circulations is through loop system maintaining water temp at 80oC.

Location Buildings Borg el Arab, Alexandria, Egypt.
 SAFE Pharma is an Egyptian pharmaceutical company in Borg Al Arab

Field of Work Electro-Mechanical Consultant and design review for:
 Firefighting and fire Alarm system.

Supervision YES

Pharmaceutical Industries



PHARCO PHARMACEUTICALS

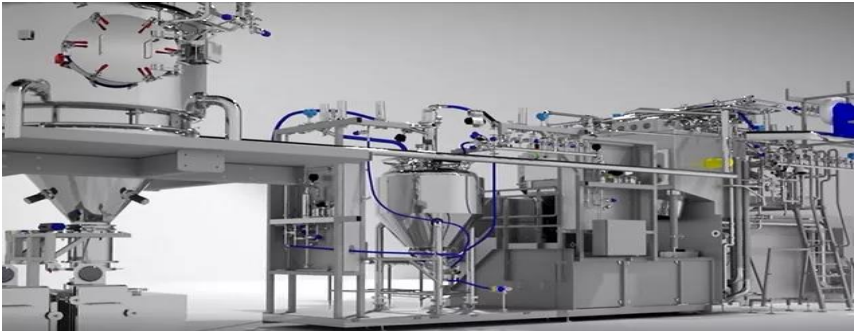
Project Data	PHARCO Pharmaceutical Industry in Amriya, Tablet Penicillin Plant II.
Location	Amriya, Alexandria.
Buildings	Tablet Penicillin Plant II & Firefighting Building.
Field of Work	Electro-Mechanical Consultant and design of: <ul style="list-style-type: none"> - Mechanical systems (HVAC, Plumbing, Firefighting) - Electrical systems (Light current systems) - Pure Media Piping systems (Pure steam, Purified water) - Industrial Piping systems (Chilled water system, City water cooling system, air system) - Electrical , HVAC, Fire Fighting Systems for (Firefighting Building)
Supervision	NO



AL MASHRIQ PHARMA

Project Data	AL MASHRIQ factory is a newly established factory with specialized pharmaceutical products in Kingdom Of Saudi Arabia.
Location	Kingdom of Saudi Arabia.
Buildings	AL MASHRIQ factory is a newly company With specialized products.
Field of Work	Electro-Mechanical Consultant and design of: <ul style="list-style-type: none"> - Mechanical systems (HVAC, Plumbing, Firefighting)
Supervision	NO.

Pharmaceutical Industries



TETRA PHARM (PHARMACEUTICAL INDUSTRIES COMPANY)

Project Data TETRA PHARM is one of the Pharmaceutical Factories in Badr industrial City in Egypt focus in sterile, solid and semisolid pharmaceutical products

Location Badr Industrial City, EGYPT

Buildings TETRA PHARM is one of the Pharmaceutical Factories In Badr industrial City.

Field of Work Conceptual Design

- Personnel Flow
- Material Flow
- Pressure and Class Area

Electro-Mechanical Consultant and design of:

- Electrical systems, Light current systems
- Mechanical systems (HVAC, Plumbing, Firefighting)
- Industrial Piping systems (Chilled water system, City water cooling system)
- Special systems (Earthing system, Partition system)

Supervision NO.



RAMEDA PHARMACEUTICAL COMPANY

Project Data RAMEDA is a leading Egyptian pharmaceutical company led by a team of professionals with extensive multinational experience. The company develops and produces a wide range of branded generic pharmaceuticals, nutraceuticals, food supplements and veterinary products.

Location Cairo, Egypt.

Buildings It is a leading Egyptian pharmaceutical company in 6th October City.

Field of Work **Factory; Electro-Mechanical Consultant and design of:**

- Firefighting and Alarm Systems updated for the factory

New Building, Electro-Mechanical Consultant and design of:

- Electrical systems, Light current systems
- Mechanical systems (HVAC, Plumbing, Firefighting)
- Pure Media Piping systems (Pure steam, Purified water, Water for injection)
- Industrial Piping systems (Chilled water system, City water cooling system, air system)
- Special systems (Earthing system)

Supervision Factory Fire Fighting – YES

Pharmaceutical Industries



ACDIMA - ARAB COMPANY FOR DRUG INDUSTRIES AND MEDICAL APPLIANCES

Project Data ACDIMA is an Egyptian investment corporate specialized in pharmaceutical industries.

Location 6th of October City, EGYPT

Buildings It is an Egyptian investment corporate specialized in pharmaceutical industries.

Field of Work Electro-Mechanical Consultant and design of:
 - Fire Fighting & Fire Alarm for ware house.

Supervision YES



MEDIC EGYPT FOR MEDICAL CLOTHES

Project Data MEDIC –EGYPT for Medical Clothes is a manufacturing company specialized in production of medical clothes, in Sadat City, Egypt.

Location Sadat City, Egypt.

Buildings It is a manufacturing company specialized in production of medical clothes.

Field of Work Electro-Mechanical Consultant and design of:
 - HVAC System.

Supervision NO.

Pharmaceutical Industries



VETO PHARMA COMPANY

Project Data VETO PHARM PHARMACEUTICALS, It manufactures and markets more than 100 pharmaceuticals products.

Location Borg Al arab, Alexandria, EGYPT

Buildings VETO PHARMA manufactures and markets more than 100 products.

Field of Work Electro-Mechanical Consultant and design of:
 - Mechanical systems (HVAC)

Supervision NO



PHARAONIA PHARMACEUTICAL COMPANY

Project Data PHARAONIA PHARMACEUTICALS was founded in 1997. It manufactures and markets more than 250 products and 50 products in the pipelines which almost cover all therapeutic groups and dosage forms.

Location Borg Al Arab, Alexandria, EGYPT

Buildings NOVA PHARMA provides Vaccine for veterinary.

Field of Work Electro-Mechanical Consultant and design of:

- Electrical systems, Light current systems
- Mechanical systems (HVAC, Plumbing, Firefighting)
- Pure Media Piping systems (Pure steam, Purified water, Water for injection)
- Industrial Piping systems (Steam system, Chilled water system, City water cooling system, air system)
- Special systems (Elevators, Earthing system, Industrial waste water treatment station, water treatment station, store racking system, Partition system)

Supervision YES.

Pharmaceutical Industries



WETEVER COSMETICS COMPANY

Project Data WETEVER – COSMETICS COMPANY specialized in production Of cosmetics products in Egypt.

Location 10th of Ramadan, Egypt.

Buildings WETEVER is specialized in production of cosmetics products in Egypt.

Field of Work **Conceptual Design**

- Personnel Flow
- Material Flow
- Pressure and Class Area

Electro-Mechanical Consultant and design of:

- Electrical systems, Light current systems
- Mechanical systems (HVAC, Plumbing, Firefighting)
- Industrial Piping systems (Chilled water system, City water cooling system, air system)
- Special systems (Elevators, Earthing system, Industrial waste water treatment station, water treatment station, store racking system, Partition system)

Supervision YES



AL ROMANY OPHTHALMICS LENSES FACTORY

Project Data AL ROMANY OPHTHALMICS FACTORY is comprising a new factory for ophthalmic lens production in 10th of Ramadan, Egypt.

Location 10th of Ramadan city, Egypt

Buildings AL ROMANY OPHTHALMICS LENSES FACTORY is a new factory for ophthalmic lens production.

Field of Work **Conceptual Design**

- Personnel Flow
- Material Flow
- Pressure and Class Area

Electro-Mechanical Consultant and design of:

- Electrical systems, Light current systems
- Mechanical systems (HVAC, Plumbing, Firefighting)
- Special systems (Elevators, Earthing system, water treatment station)

Supervision YES

Pharmaceutical Industries

Interpharma

INTERPHARMA INDUSTRIES CO.- WAREHOUSE.

Project Data INTERPHARMA is one of pharmaceutical companies in Egypt.

Location 10th of Ramadan, Egypt.

Buildings Warehouse in 10Th of Ramadan.

Field of Work

Electro-Mechanical Consultant and design of:

- Electrical systems, Light current systems
- Mechanical systems (HVAC, Plumbing, Firefighting)

Supervision YES



ATCO PHARMACUTICALS STERIALE FACTORY, QUSENA.

Project Data ATCO Pharma Company new extension

Location QUSENA, Egypt.

Field of Work

Electro-Mechanical Consultant and design of:

- Electrical systems, Light current systems
- Mechanical systems (HVAC, Plumbing, Firefighting)
- Industrial Piping systems (Chilled water system, City water cooling system)
- Special systems (Earthing system)

Supervision NO

Pharmaceutical Industries



PIVOT PHARMA -SUZE, EGYPT.

Project Data PIVOTPHARMA is one of pharmaceutical companies in Egypt.

Location SUZE, Egypt.

Field of Work

General Consultant and design of:

- Structural works.
- Architectural works.
- Electrical systems, Light current systems
- Mechanical systems (HVAC, Plumbing, Firefighting)
- Pure Media Piping systems.
- Industrial Piping systems.

Supervision NO



CAIRO PHARMACEUTICAL CO. - CAIRO , EGYPT.

Project Data CAIRO PHARMA is one of pharmaceutical companies in Egypt.

Location Cairo, Egypt.

Building Powder section warehouse.

Field of Work

Electro-Mechanical Consultant and design of:

- Electrical systems
- Mechanical systems (HVAC, Firefighting)

Supervision NO

Pharmaceutical Industries



UG MEDICAL FACTORY-EL BASATIN, CAIRO

Project Data UG-MEDICAL FACTORY IN BASATIN ,CAIRO

Location BASATIN, CAIRO

Field of Work General Consultant and design of:

- Conceptual design
- Process machines
- Civil works.
- Architectural works.
- Electrical systems, Light current systems
- Mechanical systems (HVAC, Plumbing, Firefighting, piping systems)

Supervision YES



WISDOM COMPANY -COSMETIC AREA -SADAT CITY .

Project Data WISDOM COMPANY - COSMETIC AREA.

Location SADAT CITY ,EGYPT

Field of Work General Consultant and design of:

- Conceptual design
- Process machines
- Electrical systems, Light current systems
- Mechanical systems (HVAC, Plumbing, Firefighting, piping systems)
- Pure Media Piping systems (Pure steam, Purified water)
- Industrial Piping systems.

Supervision NO

PHARCO PHARMACEUTICALS, MADINAH , KSA.

Project Data Pharmaceutical Industry in Madinah, KSA.

Location Madinah, KSA.

- Field of Work**
- **Electro-Mechanical Consultant and design of:**
 - Infra Structure works:
 - Electrical Works and Light Current works
 - Mechanical Works:
 - Fire Fighting, Sewage system, Storm drainage system, Water Supply system, Industrial drainage system
 - Boiler house
 - Compressor room
 - Production building
 - Electrical Works and Light Current works
 - Mechanical systems:
 - HVAC system, Fire Fighting system
 - Plumbing system
 - Water Supply system, Sewage system, Industrial Drainage system, Storm Water system
 - Industrial Piping
 - Compressed Air System
 - Industrial Steam system



Supervision NO

ARAB DRUG COMPANY (ADCO) -CAIRO, EGYPT

Project Data ADCO is a company owned by the pharmaceutical holding company in EGYPT

Location CAIRO, EGYPT.

Field of Work **Projects:**

- Water treatment plant and loops
- Solids production area
- Ointment and suppositories production area

General Consultant and design of :

- Conceptual design
- Architecture design
- Electrical systems, Light current systems
- Mechanical systems (HVAC, Plumbing, Firefighting and piping)

Supervision YES



SAKR GROUP FOR FOOD INDUSTRIES

Project Data The project comprises the 7 factories which has Employs over 1500 people.
Location Alexandria, Egypt.
Buildings SAKR Group Complex for FOOD industries in Borg El-Arab (7 factories).

Field of Work **New Factory Electro-Mechanical Consultant and design of:**

- Factory layout
- Process flow and machines
- Electrical systems, Light current systems
- Mechanical systems (HVAC, Plumbing, Firefighting)
- Industrial Piping systems (Chilled water system, City water cooling system, air system)
- Special systems (Elevators, Earthing system, Industrial waste water treatment station, water treatment station, store racking system)

TETRAPACK 2 New Factory: Electro-Mechanical Consultant and design of:

- Electrical systems, Light current systems
- Mechanical systems (HVAC, Plumbing, Firefighting)
- Special systems (water treatment station)

TETRAPACK 1: Electro-Mechanical Consultant and design of:

- Mechanical systems (HVAC, Firefighting)
- Special systems (Ammonia cooling planet)

Butter Factory: Electro-Mechanical Consultant and design of:

- Mechanical systems (HVAC, Firefighting)

Glass Juice Factory: Electro-Mechanical Consultant and design of:

- Mechanical systems (Firefighting)

EZZAKO Ware House: Electro-Mechanical Consultant and design of:

- Mechanical systems (Firefighting)

Pulp Factory: Electro-Mechanical Consultant and design of:

- Mechanical systems (Firefighting)

Supervision

YES





GREEN HOPE FOR AGRICULTURAL DEVELOPMENT

Project Data GREEN HOPE for agricultural development is Specialized in Harvest, Production & Sales of Vegetables & Fruits from The Best Cultivated in Egypt.

Location El Sadat industrial city, Egypt.

Buildings GREEN HOPE for agricultural development is Specialized in Harvest (Oil Industries).

Field of Work

Factory Layout

- Equipment's Layout
- Equipment's Utilities

Electro-Mechanical Consultant and design of:

- Electrical systems, Light current systems
- Mechanical systems (HVAC, Plumbing, Firefighting)
- Industrial Piping systems (Chilled water system, City water cooling system, air system)
- Special systems (Elevators, Earthing system, water treatment station)
- Electromechanical design works for new ware houses.

Process works for production lines

- Process piping system

Supervision YES



FOOD TRIP FACTORY -10TH OF RAMADAN

Project Data FOOD TRIP FACTORY is Specialized in food & Beverages Production, it is located in 10th Of Ramadan, Egypt.

Location 10th of Ramadan city, Egypt.

Buildings GREEN HOPE for agricultural development is Specialized in Harvest (Oil Industries).

Field of Work

Factory Layout

- Equipment's Layout
- Equipment's Utilities

Electro-Mechanical Consultant and design of:

- Electrical systems, Light current systems
- Mechanical systems (HVAC, Plumbing, Firefighting)
- Industrial Piping systems (Chilled water system, City water cooling system, air system)
- Special systems (Elevators, Earthing system, water treatment station)

Process works for production lines

- Process piping system

Supervision YES



T H E F A R M

LAMAR

Project Data	The project is the installation of an extra TETRAPACK production line in Lamar Factory
Location	Nuberia, Behira, Egypt
Buildings	New TETRAPACK production line in Lamar Factory.
Field of Work	<p><u>Electro-Mechanical Consultant and design of:</u></p> <ul style="list-style-type: none"> - piping work of Steam line; Condensate line; Water lines; Chilled water line; - Ice water line; Sanitary Airline; Compressed Airline
Supervision	NO



EGYPT FOODS

Project Data	The project is a group of buildings belong to Egypt Foods Group at Industrial Mubarak Zone comprise of 6 factories, 2 administration Buildings, warehouse and car service center.
Location	Monofiya, Egypt
Buildings	FOOD TRIP FACTORY is Specialized in food & Beverages Production (chips)
Field of Work	<p><u>Factory Layout</u></p> <ul style="list-style-type: none"> - Equipment's Layout - Equipment's Utilities <p><u>Electro-Mechanical Consultant and design of:</u></p> <ul style="list-style-type: none"> - Electrical systems, Light current systems - Mechanical systems (HVAC, Plumbing, Firefighting) - Industrial Piping systems (air system) - Special systems (Earthing system, water treatment station)
Supervision	YES

Food and Beverages



KRAFT HEINZ EGYPT

Project Data	The projects comprises Firefighting system evaluation and test and commissioning Industrial Zone 2, 6th October City.
Location	6 th of October, Egypt
Buildings	Main Building in Industrial Zone 2, 6th October City
Field of Work	<u>Electro-Mechanical Consultant and design of:</u> - Fire Fighting System.
Supervision	NO



ALEXANDRIA SUGAR COMPANY (ASC)

Project Data	The project comprises of a complete sugar production line in one factory of 1,092,000 m2 in Elnobaria region In Alexandria, Egypt.
Location	Alexandria, Egypt.
Buildings	sugar production line in one factory of 1,092,000 m2 In El-Nubaria.
Field of Work	<u>Electro-Mechanical Consultant and design of:</u> - Firefighting and Alarm systems. - Deducing system
Supervision	YES

Food and Beverages



ALEXANDRIA FLOUR MILLS COMPANY

Project Data	The project comprises 4 factories of Alexandria Flour Mills for 4 factories including the production , storing and administration buildings in Alexandria, Egypt
Location	Alexandria, Egypt.
Buildings	the project comprises 4 factories of Alexandria Flour Mills for 4 factories Production, storing and administration buildings.
Field of Work	<u>Electro-Mechanical Consultant and design of:</u> - Alarm system
Supervision	NO



MARS COMPANY EGYPT (CHOCOLATE FACTORY)

Project Data	The projects comprises HVAC system review and upgrading for the production area in Industrial Zone 3, 6th October City.
Location	6 th of October, Egypt
Buildings	The projects comprise HVAC system Review and Upgrading for the production area.
Field of Work	<u>Electro-Mechanical Consultant and design of:</u> - HVAC System and thermal map for production area.
Supervision	YES



SECLAM CO. (MANSOUR FOR TRADING & INDUSTRIES)

Project Data The project comprises one of the biggest dairy factories in Egypt which include of Administration Buildings, Production buildings, stores ...etc. In Alexandria, Egypt.

Location Alexandria, Egypt.

Field of Work Design of Firefighting and Alarm systems of stores.

Supervision YES



UNILEVER

Project Data The project comprises of the tea factory in Alexandria.

Location Borg elarab, Alexandria Egypt.

Buildings: the project comprises of the tea factory in Alexandria.

Field of Work Electro-Mechanical Consultant and design of:

- HVAC system as built, evaluation, cooling load calculations,
- upgrading for the Tea Factory Production Area,
- Air system and vacuum system upgrading

Supervision NO



EL SAIDY FACTORY FOR PATISSERIE

Project Data	The project comprises one of the Biggest of The Patisserie factory in Alexandria.
Location	Desouk, Kfr elsheekh, Egypt.
Buildings	The project comprises one of the Patisserie factory In Alexandria.
Field of Work	<p><u>Electro-Mechanical Consultant and design of:</u></p> <ul style="list-style-type: none"> - Firefighting system, Fire Alarm - Hot Water System - Compressed air system. - HVAC system
Supervision	NO



EL MALEKA (SAVOLA GROUP.)

Project Data	<p>El Maleka (Savola Group) provides high quality pasta.</p> <p>It is Egypt's leading pasta brand, available in nine different shapes</p>
Location	10 TH of Ramadan, Sharqya, Egypt.
Buildings	El Maleka (Savola Group) in 10 TH of Ramadan, Sharia, Egypt.
Field of Work	<p><u>Electro-Mechanical Consultant and design of:</u></p> <ul style="list-style-type: none"> - Firefighting and Alarm systems.
Supervision	YES



IEPPCO FACTORY

Project Data The project comprises a new factory for eggs production

Location Borg ElArab, Alexandria, Egypt

Buildings The project comprises a new factory for eggs production

Field of Work. Electro-Mechanical Consultant and design of:

- Electrical systems, Light current systems
- Mechanical systems (HVAC, Plumbing, Firefighting)
- Industrial Piping systems (Chilled water system, City water cooling system, air system)
- Special systems (Earthing system, Industrial waste water treatment station, water treatment station)

Supervision YES



GANDOUR FACTORY.

Project Data GANDOUR FACTORY is one of the largest confectioners in the Middle East delivering quality food products to satisfied consumer for over 150 years

Location Obour City, Egypt.

Buildings It is one of the largest confectioners in the Middle East delivering quality food.

Field of Work Electro-Mechanical Consultant and design of:

- Mechanical systems (HVAC, Firefighting)

Supervision NO



AL GARAS FOOD INGREDIENTS COMPANY (BELL FOODS)

Project Data The project comprises of the main stores for Al Garas Food Ingredients Company (BELL FOODS) in EGYPT.

Location Alexandria, Egypt.

Buildings The project comprises of the main stores for Al Garas Food Ingredients comp.

Field of Work Electro-Mechanical Consultant and design of:

- Fire Fighting- and fire alarm systems

Supervision NO



ABO DONKOL FEEDS FACTORY

Project Data Abo Donkol Feeds is one of the leading privately owned corporations that operates in the fodders sector In Egypt and the Middle East.

Location Borg el Arab, Alexandria, Egypt.

Buildings Abo Donkol Feeds is one of the leading privately owned corporations, operates in the fodders sector In Egypt and the Middle East.

Field of Work Electro-Mechanical Consultant and design of:

- Ventilation system for the main feeds store.

Supervision NO



AL ASDEKAA CO. FOR DIARY PRODUCTS.

Project Data AL ASDEKAA COMPANY for dairy products, is one of factories in Borg Al Arab, Alexandria.

Location Alexandria, Borg Al Arab.

Buildings It is for dairy products, is one of factories in Borg Al Arab, Alexandria.

Field of Work Electro-Mechanical Consultant and design of:
 - Chilled water system for process.

Supervision YES.



EL MEEM GARLIC FACTORY

Project Data AL MEEM GARLIC FACTORY project is one of food products industries

Location Cairo dessert road , Sadat city .

Buildings It is for food products factories in Egypt.

Field of Work Electro-Mechanical Consultant and design of:
 - Factory Layout.
 - Electrical, HVAC, Firefighting, Plumbing Works.

Supervision NO.



EGYPTIAN SWISS GROUP -CAIRO.

Project Data EGYPTIAN SWISS GROUP CO. is Specialized in food & Beverages Production

Location CAIRO, EGYPT.

Field of Work Electro-Mechanical Consultant and Supervision of:
 - Fire Alarm system.
 - Fire Fighting System.

Supervision YES.



FISH FACTORY- NEW PRODUCTION HALL, CAIRO.

Project Data FISH FACTORY -NEW PRODUCTION HALL is located in, port said,

Location Port said, Egypt.

Buildings It is for fish products in Egypt.

Field of Work Electro-Mechanical Consultant and design of:
 - Electrical System (Lighting system -Power system -light current system)
 - Mechanical systems (HVAC, Firefighting, Plumbing Works)
 - Special System (Cooling System for Cold Stores)

Supervision NO.

Food and Beverages



EL SONBALA COMPANY, CAIRO, EGYPT

Project Data The project comprises a new factory for eggs production

Location CAIRO, EGYPT

Field of Work Electro-Mechanical Consultant and design of:
 - Firefighting & Fire alarm systems

Supervision YES.



SAKR_REF. FACTORY -Kafr El-Dawar, EGYPT.

Project Data FREEZER FACTORY - is located in KAFR-EL-DAWAR

Location KAFR-ELDAWAR, EGYPT

Field of Work Electro-Mechanical Consultant and design of:
 - Cooling System for Cold Stores
 - Cold store layout
 - Cold store panels
 - Cold store electrical and mechanical work

Supervision YES

General Industries



EL SEWEDY CABLES (FACTORY)

- Project Data** The project comprises of the total area 16500 m2 & one of the biggest factories in Egypt , distributed on Administration building, storages , pump room ...etc
- Location** 10th of Ramdan, Egypt
- Buildings** The project comprises of the total area 16500 m2.
- Field of Work** **Administration building: Electro-Mechanical Consultant and design of:**
- Electrical systems, Light current systems
 - Mechanical systems (HVAC, Plumbing, Firefighting)
- Supervision** YES.



ACI FACTORY

- Project Data** The project comprises a new factory for industrial Sealing production in Borg El Arab, Alexandria.
- Location** Borg El Arab, Alexandria, Egypt
- Buildings** The project comprises a new factory for industrial sealing production
- Field of Work.** **Electro-Mechanical Consultant and design of:**
- Electrical systems, Light current systems
 - Mechanical systems (HVAC, Plumbing, Firefighting)
 - Industrial Piping systems (City water cooling system, air system)
 - Special systems (Earthing system, Industrial waste water treatment station)
- Supervision** YES.



KATAMIYA AIR BASE

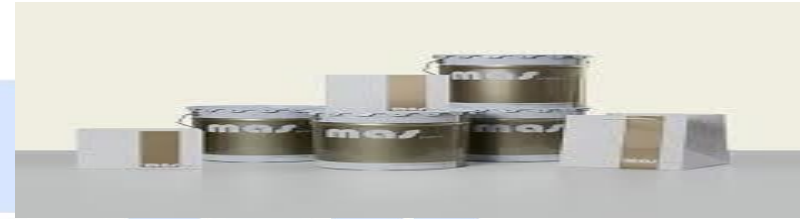
Location 5th settlement, New Cairo, EGYPT

Buildings The project is located in new Cairo.

Field of Work Electro-Mechanical Consultant and design of:

- Electrical systems, Light current systems
- Mechanical systems (HVAC, Plumbing, Firefighting)
- Industrial Piping systems (air system)

Supervision NO



MAS FACTORY FOR PAINTING

Project Data MAS FACTORY FOR PAINTING specialized in production Of painting products in Egypt.

Location 10th of Ramadan, Egypt.

Buildings MAS FACTORY is specialized in production of painting Products in Egypt.

Field of Work

Factory Layout

- Equipment's Layout
- Equipment's Utilities

Electro-Mechanical Consultant and design of:

- Electrical systems, Light current systems
- Mechanical systems (HVAC, Plumbing, Firefighting)
- Industrial Piping systems (Chilled water system, City water cooling system, air system)
- Special systems (Elevators, Earthing system, Industrial waste water treatment station)

Process works for production lines

- Process piping system
- Process Tanks design

Supervision YES

General Industries



AL ROWAD COMPLEX FACTORY.

Project Data ALROWAD COMPANY is one of the leading Egyptian companies working in plastic industry specialized in designing and manufacturing HDPE pipes, PVC, and fitting by using the best raw material and developing the highest technology and quality applied in this field.

Location Beni Suef, Egypt

Buildings It is one of the leading Egyptian companies working in plastic industries.

Field of Work **Factory Layout**

- Equipment's Layout
- Equipment's Utilities

Electro-Mechanical Consultant and design of:

- Electrical systems, Light current systems
- Mechanical systems (HVAC, Plumbing, Firefighting)
- Industrial Piping systems (Chilled water system, City water cooling system, air system)
- Special systems (Elevators, Earthing system, Industrial waste water treatment station)

Process works for production lines

- Process piping system
- Process Tanks design

Supervision YES



GROW FACTORY

Project Data GROW FACTORY specialized in production of cosmetics Products and oil products.

Location Borg Al Arab, Alexandria, Egypt.

Buildings It specialized in production of cosmetics products and oil products.

Field of Work **Electro-Mechanical Consultant and design of:**

- Electrical systems, Light current systems
- Mechanical systems (HVAC, Plumbing, Firefighting)
- Industrial Piping systems (Chilled water system, City water cooling system, air system)
- Special systems (Elevators, Earthing system, Industrial waste water treatment station)

Process works for production lines

- Process piping system

Supervision YES

General Industries



EL KAWSER FACTORY FOR PAINTING ADDETTIVES

Project Data EL KAWSAR FACTORY FOR Painting additives
 Of painting products in Egypt.

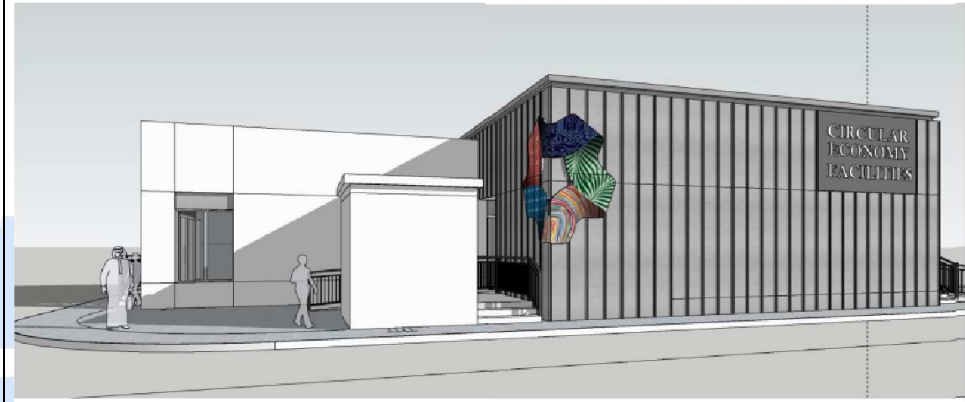
Location 10th of Ramadan, Egypt.

Buildings EL KAWSAR FACTORY is specialized in production of painting
 Products in Egypt.

Field of Work Electro-Mechanical Consultant and design of:

- Electrical systems, Light current systems
- Mechanical systems (HVAC, Plumbing, Firefighting)
- Industrial Piping systems (Chilled water system, City water cooling system, air system)
- Special systems (Earthing system, Industrial waste water treatment station)

Supervision YES



CIRCULAR ECONOMY FACTORY, NEUM, KSA.

Project Data CIRCULAR ECONOMY FACTORY for plastic, paper
 recycling products in NEUM, KSA.

Location NEUM, KSA..

Buildings CIRCULAR ECONOMY FACTORY is specialized for plastic, paper
 Recycling Products in KSA

Field of Work Electro-Mechanical Consultant and design of:

- Electrical systems, Light current systems
- Mechanical systems (HVAC, Plumbing, Firefighting)

Supervision NO

General Industries



EVYAP EGYPT INDUSTRIAL

Project Data	The project comprises an area of 45,680 m ² , 6,000 m ² Of which is closed. The total area after the investment will be 60.575 m ² ; 34.677 m ² of which will be closed area
Location	Alexandria, Egypt.
Buildings	the project comprises an area of 45,680 m ² , 6,000 m ² Of which is closed. the total area after the investment Will be 60.575 m ² ; 34.677 m ² .
Field of Work	Electro-Mechanical Consultant and design of: - Mechanical systems (HVAC, Firefighting, Fire Alarm)
Supervision	YES



MADAR GROUP EGYPT

Project Data	The project comprises a new factor for the company which is specialized in FMCG Home Care, Personal Care products and diapers manufacturing and distribution
Location	Alexandria, Egypt.
Buildings	the project comprises a new factor for the company Specialized in FMCG Home Care, Personal Care products And diapers.
Field of Work	Electro-Mechanical Consultant and design of: - Heat exchangers - Elevators
Supervision	NO

General Industries



BASATEEN ASWAN PUMP STATION

- Project Data** The project comprises of a pump station of 11 pumps with 1 m³/sec to irrigate 15000 acre in Aswan
- Location** Aswan, Egypt.
- Buildings** The project comprises of a pump station of 11 pumps pumps capacity with 1 m³/sec to irrigate 15000 acre in Aswan
- Field of Work** **Electro-Mechanical Consultant and design of:**
- Electrical systems
 - Mechanical systems (Pump Station Design)
- Supervision** YES



EGYPTSAT TELECOM FACTORY

- Project Data** The project comprises a new factory in Elobour City.
- Location** Elobour, Cairo, Egypt
- Buildings** The project comprises a new factory in Elobour City.
- Field of Work** **Electro-Mechanical Consultant and design of:**
- Electrical systems, Light current systems
 - Mechanical systems (HVAC, Plumbing, Firefighting)
- Supervision** YES.

General Industries



MANTRAC

Project Data	The project comprises of the main facility in Alexandria.
Location	El Amreia, Alexandria Egypt.
Buildings	The project comprises of the main facility in Alexandria.
Field of Work	<u>Electro-Mechanical Consultant and design of:</u> <ul style="list-style-type: none"> - Alarm System - Firefighting System
Supervision	YES



HASAN ALLAM SONS CONSTRUCTION (H. A. CONSTRUCTION – ALLAM STEEL

Project Data	The project comprises of the main facility in Alexandria.
Location	El Amreia, Alexandria Egypt.
Buildings	The project comprises of the main facility in Alexandria.
Field of Work	<u>Electro-Mechanical Consultant and design of:</u> <ul style="list-style-type: none"> - Alarm System - Firefighting System
Supervision	YES

General Industries



HASAN ALLAM SONS CONSTRUCTION 10TH OF RAMADAN

Project Data	The project comprises of the main facility in 10 th or Ramadan
Location	10 th or Ramadan, Egypt.
Buildings	The project comprises of the main facility in 10 th or Ramadan
Field of Work	<u>Electro-Mechanical Consultant and design of:</u> - Alarm System - Firefighting System
Supervision	YES



MANTRAC LIBERIA

Project Data	The project comprises of the total area 30350 m2, distributed on Administration building, stores And workshops. In additional to landscape
Location	Liberia
Buildings	The project comprises of the total area 30350 m2, distributed on Administration building, Stores and workshops. In additional to landscape
Field of Work	<u>Electro-Mechanical Consultant and design of:</u> - Firefighting System
Supervision	NO

General Industries



ELVAN GARMENT FOR DYEING

- Project Data** The project comprises of total area 23000 m2 which is specialized in in production Garment and Elvan for dyeing
- Location** free zone, Alexandria, Egypt.
- Buildings** The project comprises of total area 23000 m2.
- Field of Work** Electro-Mechanical Consultant and design of:
- Alarm System
 - Firefighting System
- Supervision** YES



EZZ STEEL FACTORY

- Project Data** EZZ STEEL FACTORY is the largest independent steel producer in the Middle East and North Africa, exporting high-quality steel products to many countries on four continents around the world
- Location** Alexandria, Egypt
- Buildings** EZZ STEEL FACTORY is the largest independent steel producer in the Middle East
- Field of Work** Electro-Mechanical Consultant and design of:
- Alarm System
 - Firefighting System
- Supervision** YES

General Industries



NILE VALLEY PACKAGING FACTORY (TRADE & AGENCIES)

Project Data NILE VALLEY TRADE & AGENCIES is an Egyptian shareholder company focus in packing and packaging industry to an import / export business specializing in the middle east and working with the Far East, Europe and the United States in a range of products and services.

Location	Sadat industrial city, EGYPT
Buildings	NILE VALLEY is an Egyptian shareholder company Focus in packing.
Field of Work	<u>Electro-Mechanical Consultant and design of:</u> <ul style="list-style-type: none"> - Fire Alarm - Mechanical systems (HVAC, Plumbing, Firefighting)
Supervision	YES.



LUNA (PERFUMES& COSMETICS -PAC)

Project Data LUNA GROUP is a group of companies which have acquired expertise in the development and manufacturing of Para Pharmaceuticals, decorative cosmetics, Flavor & Perfumery compounds. The current project is a new ware house and a new production building for Disinfectants.

Location	6 th of October City, Egypt.
Buildings	LUNA GROUP is specialized in production Of cosmetics products in Egypt.
Field of Work	<u>Electro-Mechanical Consultant</u> as: <ul style="list-style-type: none"> - Owner Representative for Project Electro-Mechanical work.
Supervision	NO.

General Industries



BELYARN - TEXTILE FACTORY

Project Data	BELYARN Textile factory is one of the newest factory In 10 th of Ramadan which is specialized in textile garments.
Location	Industrial zone, 10th of Ramadan City. Egypt.
Buildings	It is one of the newest factories which is specialized
Field of Work	In textile garments. Electro-Mechanical Consultant and design of: <ul style="list-style-type: none"> - Alarm System - Firefighting System
Supervision	NO.



LORD COMPANY

Project Data	LORD was established in 1930 with machinery from Solingen, Germany. Over the years this was improved and modernized to stay abreast with the leaders in the industry. In 1978 Wilkinson Sword, formed a joint venture with the company and upgraded the systems, procedures and quality controls.
Location	Alexandria, Egypt.
Buildings	LORD was established in 1930 with machinery from Solingen, Germany.
Field of Work	LORD 5: Electro-Mechanical Consultant and design of: <ul style="list-style-type: none"> - Mechanical systems (HVAC, Plumbing, Firefighting) - Industrial Piping systems (air system) - Special systems (Industrial waste water treatment station) LORD 3: Electro-Mechanical Consultant and design of: <ul style="list-style-type: none"> - Alarm System - Firefighting System LORD 1: Electro-Mechanical Consultant and design of: <ul style="list-style-type: none"> - Alarm System - Firefighting System
Supervision	YES

General Industries



MAC COMPANY

Project Data MAC Carpet was established in 1980 in Egypt with a capital of one million dollars and a total annual production of one million square meters. MAC Carpet is now considered a world leader in the carpet industry for custom tufted and digital printed carpets and rugs specifically produced to meet each and every client's demands and individualistic needs.

Location El-Sadat City, Egypt.

Buildings MAC Carpet factory .

Field of Work

Electro-Mechanical Consultant and design of:

- Alarm System
- Firefighting System

Supervision YES.

PROMETEON



PROMETEON- PIRELLI TYRE GROUP

Project Data PROMETEON Tyre Group manufactures and sells tires especially for industry, transport of goods and passengers, and AGRO and OTR applications. Officially established in 2017 as a spin-off from the industrial division of PIRELLI Tyre, PROMETEON starts its path producing and selling PIRELLI branded tires.

Location Alexandria, Egypt.

Buildings it specialized in tires especially for industry,

Transport of goods and passengers.

Field of Work

Electro-Mechanical Consultant and design of:

- Mechanical systems (HVAC)

Supervision NO



KOBUSCH PACKAGING.

Project Data The project comprises the new store building

Location Alexandria, Egypt

Buildings The project comprises the new store building

Field of Work Electro-Mechanical Consultant and design of:

- Fire Alarm
- Firefighting
- Energy auditing

Supervision NO



NEW MAC COMPANY

Project Data New MAC Carpet in 10th of Ramadan..

Location 10th of Ramadan, Egypt.

Buildings NEW MAC Carpet factory building.

Field of Work Electro-Mechanical Consultant and design of:

- Alarm System
- Firefighting System

Supervision YES.

EL SEWEDY TRANSFORMERS (MOTOR FACTORY)

Project Data The project comprises one of new factory for El SEWEDY .

Location SUZE, EGYPT.

Buildings The MOTOR FACTORY .

Field of Work Electro-Mechanical Consultant and design of:

- Electrical System, Light Current.
- HVAC, Firefighting, plumbing systems.
-

Supervision YES.





EL ESRA FACTORY -CHEMA FACTORY, NOBARIY, EGYPT

Project Data EL ESRA -CHEMA FACTORY in Nobariya, Egypt.

Location Nobariya, Egypt.

Buildings CHEMA factory building.

Field of Work Electro-Mechanical Consultant and design of:
 - Alarm System
 - Firefighting System

Supervision YES.



CHEMA FACTORY, NOBARIY, EGYPT

Project Data CHEMA FACTORY in Nobariya, Egypt.

Location Nobariya, Egypt.

Buildings CHEMA factory building.

Field of Work Electro-Mechanical Consultant and design of:
 - Alarm System
 - Firefighting System

Supervision YES.



ALEX PANEL FACTORY -AIN SOKHNA, SUZE, EGYPT

Project Data ALEX PANEL is located in AIN SOKHNA, SUZE, EGYPT.

Location AIN SOKHNA, SUZE, EGYPT

Buildings The factory building in AIN SOKHNA, SUZE

Field of Work Electro-Mechanical Consultant and design of:

- Electrical systems, Light current systems
- Mechanical systems (HVAC, Plumbing, Firefighting)
- Industrial Piping for Compressed Air System

Supervision YES



POLYSERVE- MAGNESIUM SULPHATE -ABO ZABAL,
Project Data POLYSERVE Magnesium Sulphat - specialized in fertilized products

Location Abo Zabal, Egypt.

Field of Work General Consultant and design of:

- Factory layout.
- Structural works.
- Architectural works.

Electro-Mechanical Consultant and design of:

- Electrical systems, Light current systems
- Mechanical systems (HVAC, Plumbing, Firefighting)
- Pure Media Piping systems (Pure steam, Purified water)
- Industrial Piping systems (Chilled water system, City water cooling system, air system)
- Special systems (Earthing system)

Supervision YES.

EL SEWEDY PIVOT FACTORY, SOKHNA, SUEZ, EGYPT



Project Data PIVOT FACTORY OF EL SWEEDY is located in SOKHNA, SUEZ.

Location SOKHNA, SUZE, EGYPT.

Buildings The PIVOT FACTORY.

Field of Work Electro-Mechanical Consultant and design of:

- Electrical systems, Light current systems
- Mechanical systems (HVAC, Plumbing, Firefighting)
- Compressed Air

Supervision NO.



SUEZ BAGS, KATAMIYA, EGYPT.

Project Data SUEZ BAGS is an industrial bags product in KATAMIYA.

Location KATAMIYA, EGYPT

Buildings The factory building in Katamiya.

Field of Work Electro-Mechanical Consultant and design of:

- Mechanical system (Ventilation system) for production Hall.

Supervision YES

SOYVEN™
 A CARGILL - ADM JOINT VENTURE

SOYVEN (NATIONAL VEGETABLE OIL COMPANY), BORG AL ARAB, ALEXANDRIA.

Project Data SOYVEN is the National Vegetable Oil Company soy crush facility

Location Borg Al Arab , Alexandria , Egypt.

Field of Work

Electro-Mechanical Consultant and design of:

- Engineering study for pump hydraulic calculation for pre stripper condenser.

Supervision NO.



POULTRY FARM, WADY EL NATRON, EL BEHIRA, EGYPT.

Project Data POULTRY FARM - Wadi El Natron, El Bahira.

Location Wadi El Natron, El Bahira EGYPT

Field of Work Electro-Mechanical Consultant and design of:
 - Electrical system.
 - Mechanical systems (HVAC, Plumbing)
 - Infrastructure system.

Supervision NO



CHEMA INDUSTRIES, NUBARIA

Project Data Chema Industries is considered one of the leading Egyptian Manufacturers & Exporters in the field of Fertilizers, Pesticides & Spraying Machines.

Location Nubaria, Egypt

Field of Work Electro-Mechanical Consultant and design of:
 - Electrical systems (Fire Alarm)
 - Mechanical systems (Firefighting)

Supervision YES.



ALTALAB FACTORY, SADAT CITY, EGYPT

Project Data ALTALAB CO. is located in SADAT CITY, EGYPT .

Location SADAT CITY, EGYPT

Field of Work Electro-Mechanical Consultant and design of:

- Electrical system, light current.
- HVAC, Firefighting, Plumbing,
- Industrial Piping (Industrial chilled water system,
- Chiller Area, Industrial Compressed Air system, Air Compressor Room)

Supervision YES.



HAYAH COSMETICS FACTORY

Project Data Hayah cosmetics factory in Badr City for Hayah company which founded in 2016 With the aim of meeting the needs and aspirations of customers in the field of beauty and personal care.

Location BADR CITY, EGYPT

Field of Work General Consultant and design of:

- Architecture work
- Conceptual design
- Process flow machines
- Electrical system, light current.
- HVAC, Firefighting, Plumbing, chilled water system and piping system
- Earthing system, Industrial wastewater treatment station

Supervision YES



TOBACCO FACTORY in BAHRAIN



Project Data TOBACCO FACTORY in Bahrain.

Location Bahrain

Field of Work Electro-Mechanical Consultant and design review of:

- Electrical system, light current.
- HVAC, Firefighting, Plumbing system

Supervision NO

 <p>ETISAL FOR ADVANCES INDUSTRIES FACTORY _6th OF OCTOBER, EGYPT.</p> <p>Project Data Egyptian manufacturer of producing all electronic consumer goods locally with international standards like Xiaomi phones and TVs</p> <p>Location 6th OF OCTOBER, EGYPT</p> <p>Field of Work and: <u>Electro-Mechanical Consultant</u></p> <ul style="list-style-type: none"> - Redesign of Phase 1 - Design of Phase 2 and Phase 3 - Electrical systems, Light current systems - Mechanical systems (HVAC, Plumbing, Firefighting) - Industrial Piping systems <p>Supervision YES.</p>	 <p>EBDAA CHEMICAL INDUSTRIES</p> <p>Project Data plant for Producing MCP (Mono-Calcium Phosphate) and DCP (Di-Calcium Phosphate)</p> <p>Location GAMASA industrial city, EGYPT</p> <p>Field of Work <u>General Consultant and design of:</u></p> <ul style="list-style-type: none"> - Structural works. - Architectural works - Electrical systems, Light current systems - Mechanical systems (HVAC, Plumbing, Firefighting) - Industrial Piping systems and process Tanks and utilities <p>Supervision YES.</p>
--	--



KIMA FACTORY, ASWAN, EGYPT

Project Data KIMA FACTORY in Aswan

Location ASWAN, EGYPT

Field of Work Electro-Mechanical Consultant of:

- Fire Alarm
- Firefighting

Supervision YES.



EGYPTIAN COPPER COMPANY, ALEXANDRIA, EGYPT

Project Data ALEXANDRIA COMPANY FOR COPPER

Location ALEXANDRIA

Field of Work General Consultant of For (Aluminum 1) factory design of:

- Factory Layout.
- Lighting System.
- Ground Color Codes .

Supervision NO



MANSOUR GROUP, CAIRO, EGYPT

Project Data MANSOUR GROUP , the official General Motors (GM) dealer in Egypt.

Location CAIRO, EGYPT

Field of Work Electro-Mechanical Consultant and Supervision of:

- Fire Alarm System
- Firefighting System.

Supervision YES



AERO SPACE CLEAN ROOM, NASR CITY. EGYPT.

Project Data AERO space clean room design as a contractor consultant

Location NASR CITY, EGYPT

Field of Work General Consultant and:

- Mechanical systems (HVAC, Plumbing, Firefighting)
- Electrical systems, Light current systems
- Architecture work

Supervision NO.

PAPER INDUSTRIES



FIRSTGROUP CO. FOR INDUSTRIAL DEVELOPMENT S.A.E

Project Data The project comprises a new factory called FIRST-STAR factory and is one of the biggest corrugated paper factory in Egypt

Location Elburn, Cairo, Egypt

Buildings FIRST-STAR factory.

Field of Work

Factory Layout

- Equipment's Layout
- Equipment's Utilities

Electro-Mechanical Consultant and design of:

- Electrical systems, Light current systems
- Mechanical systems (HVAC, Plumbing, Firefighting)
- Industrial Piping systems (City water cooling system, air system)
- Special systems (Elevators, Earthing system, Industrial waste water treatment station)

Process works for production lines

- Process piping system
- Process Tanks design

Supervision YES



EI MON PAPER FACTORY

Project Data The project comprises a new factory called Elmon for corrugated paper and paper manufacturing

Location Borg Elarab, Alexandria, Egypt

Buildings Elmon factory

Field of Work

Electro-Mechanical Consultant and design of:

- Alarm System
- Firefighting System

Supervision YES



NILE PACK FACTORY.

Project Data	The project comprises a new factory called Perfect-Pack factory for corrugated paper and painting in Egypt
Location	6 th of October, Cairo, Egypt
Buildings	Perfect-Pack factory
Field of Work	<p><u>Electro-Mechanical Consultant and design of:</u></p> <ul style="list-style-type: none"> - Electrical systems, Light current systems - Mechanical systems (HVAC, Plumbing, Firefighting) - Industrial Piping systems (City water cooling system, air system) - Special systems (Elevators, Earthing system, Industrial waste water treatment station)
Supervision	YES



EL YASSINE FACTORY.

Project Data	The project comprises a one of paper factories in Borg el Arab in Alexandria with a total Area of 1350 m2
Location	Borg El Arab, Alexandria, Egypt
Buildings	El Yassine factory,
Field of Work	<p><u>Electro-Mechanical Consultant and design of:</u></p> <ul style="list-style-type: none"> - Alarm System - Firefighting System - HVAC System
Supervision	NO

TEXTILE INDUSTRIES



ALPHA TEXTILE FACTORY

Project Data The project comprises one of the biggest textile factory in Alexandria which is specialized in garments. The project consists of a production hall, administration building, stores ...etc.

Location Free zone, Alexandria, Egypt.

Buildings Alpha textile factory .

Field of Work Electro-Mechanical Consultant and design of:

- Fire Alarm
- Firefighting

Supervision YES



OULABITEX FACTORY, EGYPT

Project Data "Oulabitex" is located on 10th of Ramadan city, Cairo. Considered as one of the big Textile Factories in Egypt.

Location Egypt

Buildings "Oulabitex" in 10th of Ramadan city .

Field of Work Electro-Mechanical Consultant and design of:

- Fire Alarm
- Firefighting
- HVAC

Supervision YES.

TEXTILE INDUSTRIES



KCG TEXTILE EGYPT

Project Data K.C.G Textile Egypt S.A. was established at 2007 and started production at 2008 for home textile business

Location Industrial zone, South A6.
 10th of Ramadan City. Egypt

Buildings K.C.G Textile Egypt .

Field of Work Electro-Mechanical Consultant and design of:

- Fire Alarm
- Firefighting
- solar Energy system

Supervision YES



RUBYRED FOR GARMENT

Project Data The project comprises of total area 23000 m2 which is specialized in garments and dyeing

Location Borg el Arab, Alexandria, Egypt.

Buildings Rubyred garment .

Field of Work Electro-Mechanical Consultant and design of:

- Fire Alarm
- Firefighting

Supervision YES

TEXTILE INDUSTRIES



YKK EGYPT

Project Data	YKK, zipper manufacturing company
Location	10 th of Ramadan, Egypt.
Buildings	YKK company.
Field of Work	<u>Electro-Mechanical Consultant and design of:</u> <ul style="list-style-type: none"> - Firefighting - HVAC
Supervision	YES



HAYTHAM TEXTILE COMPLEX -BORG AL ARAB

Project Data	HAYTHAM Textile complex factory, Borg Al arab.
Location	Borg Al Arab, Alexandria.
Buildings	HAYTHAM Complex factory .
Field of Work	<u>Electro-Mechanical Consultant and design of:</u> <ul style="list-style-type: none"> - Electrical system , Light Current, Power system. - HVAC , Fire fighting , plumbing systems .
Supervision	YES



ALEX APPARELS

ALEX APPAREL FACTORIES GROUP

Project Data ALEX APPAREL Textile Group factories

Location Amiriya, Alexandria.

Field of Work Electro-Mechanical Consultant and design of:

- Design Review and Renovate electro-mechanical works for factories (1,2,5,7,8,11, Laundry).
- Electrical system (Light current, Lighting, Power systems).
- Mechanical systems (Firefighting, HVAC systems, Compressed Air & Industrial Steam).

Supervision YES

PHARMAPLAST, ALEXANDRIA

Project Data Pharma plast engaged in the manufacture of wound care

Location free zone, Alexandria , Egypt.

Field of Work Electro-Mechanical Consultant and design of the following :

- Electrical systems, Light current systems

Supervision NO

ELITE INTERNATIONAL HOSPITAL

Project Data The project comprises of total area 20000 m2, distributed on eight levels (Ground, First, second, third, fourth, fifth, sixth and seventh) and basement area
Ground floor: Main Entrance & lobby, Emergency entrance & Lobby, some of admin areas and Exits. First to seventh floor: About 2,000 m2 per floor, Admin & Medical sections, operation room & ICU

Location Ring Road, Downtown, Alexandria, Egypt.

Buildings the project comprises of total area 20000 m², distributed on eight levels

Field of Work Electro-Mechanical Consultant and design of:

- Electrical systems, Light current systems
- Mechanical systems (HVAC, Plumbing, Firefighting)
- Medical Gas System
- Special systems (Elevators, Earthing system, waste water treatment station, Boilers, Laundry, Sterilization system)
- Landscape network (lighting, Irrigation systems, drainage storm network).

Supervision YES.



SAUDI- GERMAN HOSPITAL

Project Data SGH- Aims to become the premier healthcare provider and the employer of choice drawing the best talent in the MENA region. The hospital is planning to prove itself as one of the major tertiary care hospitals in Cairo and Egypt. With the capacity of around 300 beds, SGH Cairo will offer a wide Range of medical services including all kinds of specialties, sub-specialties and critical cares and with the highest International standards.

Location Alex West, Alexandria, Egypt.

Buildings the hospital is planning to prove itself as one of the major tertiary care hospitals.

Field of Work Electro-Mechanical Consultant Design review and Supervision of:

- Electrical systems, Light current systems
- Mechanical systems (HVAC, Plumbing, Firefighting)
- Medical Gas System
- Special systems (Elevators, Earthing system, waste water treatment station, Boilers, Laundry, Sterilization system)
- Landscape network (lighting, Irrigation systems, drainage storm network).

Supervision YES.



Hospitals



WELCARE HOSPITAL

Project Data	the project comprises of floor area 360 m ² , the project has 13 floors and basement area
Location	ElMohandseen, Cairo, Egypt.
Buildings	the project comprises of floor area 360 m ² , the project has 13 floors Basement area
Field of Work	<u>Electro-Mechanical Consultant and design of:</u> <ul style="list-style-type: none"> - Electrical systems, Light current systems - Mechanical systems (HVAC, Plumbing, Firefighting) - Medical Gas System - Special systems (Elevators, Earthing system, waste water treatment station, Boilers, Laundry, Sterilization system)
Supervision	YES.



LOURAN HOSPITAL

Project Data	The project comprises of total area 3,000 m ² of a new hospital extension
Location	Alexandria, Egypt
Buildings	The project comprises of total area 3,000 m ² of a new hospital extension
Field of Work	<u>Electro-Mechanical Consultant and design of :</u> <ul style="list-style-type: none"> - Electrical systems, Light current systems - Mechanical systems (HVAC, Plumbing, Firefighting) - Medical Gas System - Special systems (Elevators, Earthing system, waste water treatment station, Boilers, Laundry, Sterilization system)
Supervision	YES

Hospitals



ELHAYAH HOSPITAL

Project Data The project comprises of 1200 m², 17 floors, of high scale hospital

Location Zagazig, Egypt

Buildings The project comprises of 1200 m², 17 floors, of high scale hospital

Field of Work Electro-Mechanical Consultant and design of:

- Mechanical systems (Plumbing)
- Medical Gas System

Supervision NO



SMOUHA INTERNATIONAL MEDICAL CENTER

Project Data The project comprises of 11700 m² of high scale hospital

Location Alexandria, Egypt.

Buildings The project comprises of 11700 m² of high scale hospital

Field of Work Electro-Mechanical Consultant and design of:

- Mechanical systems (HVAC, Plumbing, Firefighting)
- Medical Gas System

Supervision YES

Hospitals



CHARITY ALEX WEST HOSPITAL

Project Data The Hospital aims to become the premier healthcare provider and the employer of choice drawing the best talent in ALEXANDRIA. The hospital is planning to prove itself as one of the major tertiary care hospitals in Egypt.

Location Alexandria, Egypt

Buildings the Hospital in Alexandria.

Field of Work **Electro-Mechanical Consultant and design of:**

- Landscape (drain work, lighting, Irrigation, firefighting systems)

Supervision YES



LIBYA HOSPITAL

Project Data The project comprises of a new hospital includes patient rooms, ICUs, and operation rooms, and other hospital facilities in LIBYA.

Location LIBYA.

Buildings The project comprises of a new hospital includes Patient rooms, in LIBYA.

Field of Work **Electro-Mechanical Consultant and design of:**

- Electrical systems, Light current systems
- Mechanical systems (HVAC, Plumbing, Firefighting)
- Medical Gas System
- Special systems (Earthing system, waste water treatment station, Boilers, Laundry, Sterilization system)

Supervision NO.

AIR FORCE - SPECIALIZED HOSPITAL

Project Data AIR FORCE HOSPITAL one of the hospitals which always make to offer the most optimum healthcare services according to the latest Scientific findings and with cooperation from everyone working in the hospital.

Location 5th Settlement, New Cairo, EGYPT

Buildings

- new extension building
- Liver transplant unit
- Kidney transplant unit
- Idoine injection unit
- Firefighting system

Field of Work **Electro-Mechanical Consultant and design of:**

- Electrical systems, Light current systems
- Mechanical systems (HVAC, Plumbing, Firefighting)

Supervision YES



EL TAYSEER INTERNATIONAL HOSPITAL

Project Data

EL TAYSEER HOSPITAL is one of the best Private hospitals in Sharkia Governorate. The hospital is equipped with the latest Medical equipment. Doctors from all specialties work in it and have high experience In the medical profession. The hospital offers The best facilities and harnesses them for the comfort of the patients.

Location

ZAGAZIG & EL MANSOURA Egypt.

Buildings

Hospital which located in ZAGAZIG & EL MANSOURA EGYPT.

Field of Work

Electro-Mechanical Consultant and design of:

- Electrical systems, Light current systems
- Mechanical systems (HVAC, Plumbing, Firefighting)
- Medical Gas System
- Special systems (Elevators, Earthing system, waste water treatment station)

Supervision

YES



PROF.DR. WALID ABDELGHAFFAR

HEIKAL HOSPITAL

- Project Data** The project comprises of a new hospital includes patient rooms, ICUs, and operation rooms, and other hospital Facilities in CAIRO.
- Location** SABTIYA, CAIRO.
- Buildings** floor area 2400 m², the project has 6 floors ,basement
- Field of Work** Electro-Mechanical Consultant and design of:
- Electrical systems, Light current systems
 - Mechanical systems (HVAC, Plumbing, Firefighting)
 - Medical Gas System
 - Special systems (Elevators, Earthing system, waste water treatment station, Boilers, Laundry, Sterilization system)
- Supervision** NO.



Hospitals



MERRY LAND HOSPITAL

Project Data	the project comprises of floor area 2400 m ² , the project has 6 floors and basement area
Location	Cairo, Egypt.
Buildings	floor area 2400 m ² , the project has 6 floors And basement area.
Field of Work	<u>Electro-Mechanical Consultant and design of:</u> <ul style="list-style-type: none"> - Electrical systems, Light current systems - Mechanical systems (HVAC, Plumbing, Firefighting) - Medical Gas System - Special systems (Elevators, Earthing system, waste water treatment station, Boilers, Laundry, Sterilization system)
Supervision	NO.



GLOBAL HOSPITAL

Project Data	The project comprises of total area 35000 m ² , distributed on three levels (Ground, Mezzanine and First) in addition to basement services area and a tower. 1) Ground floor: Main Entrance & lobby, Emergency entrance & lobby, some of admin areas and Exits. 2) Mezzanine floor: About 13,000 m ² , Admin & Medical sections. 3) 1st floor: medical sections. 4) Basement: Services 5) A tower comprises Intensive Care Units (ICU) and inpatient wards.
Location	Alexandria, Egypt
Buildings	it comprises of total area 35000 m ² , distributed on three levels Ground. Mezzanine and First) in addition to basement services area And a tower. 1) Ground floor: Main Entrance & lobby, Emergency entrance & lobby, Some of admin areas and Exits. 2) Mezzanine floor: About 13,000 m ² , Admin & Medical sections. 3) 1st floor: medical sections. 4) Basement: Services 5) A tower comprises Intensive Care Units (ICU) and inpatient wards.
Field of Work	<u>Electro-Mechanical Consultant and design of:</u> <ul style="list-style-type: none"> - Electrical systems, Light current systems - Mechanical systems (HVAC, Plumbing, Firefighting) - Medical Gas System - Special systems (Elevators, Earthing system, waste water treatment station, Boilers, Laundry, Sterilization system)
Supervision	NO.

Hospitals



ALEXANDRIA EYE HOSPITAL

Project Data The project comprises of 8000 m2.

Location Alexandria, Egypt.

Buildings The project comprises of 8000 m2.

Field of Work Electro-Mechanical Consultant and design of:

- Electrical systems, Light current systems
- Mechanical systems (HVAC, Plumbing, Firefighting)
- Medical Gas System
- Special systems (Elevators, Earthing system, waste water treatment station, Boilers, Laundry, Sterilization system)

Supervision YES



PEDIATRIC AND EMERGENCY

Project Data The project comprises of total area 17000 m2, Emergency Hospital of 2400m2 and 6 floors; and Pediatric Hospital of 3400 m2 and 5 floors.

Location Smouha, Alexandria, Egypt.

Buildings The project comprises of total area 17000 m2, Emergency Hospital of 2400m2

Field of Work Electro-Mechanical Consultant and design of:

- Fire Alarm
- Firefighting

Supervision YES

Hospitals



HELIOPOLIS HOSPITAL

Project Data	The project is a new hospital of Andalusia group in Cairo.
Location	Cairo, Egypt.
Buildings	the project is a new hospital of Andalusia group in Cairo.
Field of Work	Electro-Mechanical Consultant and design of: <ul style="list-style-type: none"> - Electrical systems, Light current systems - Mechanical systems (HVAC, Plumbing, Firefighting) - Medical Gas System
Supervision	NO



ROYAL HOSPITAL

Project Data	it located in SHIPIN ELKOM, MENOFYIA, EGYPT.
Location	Menofya, Egypt.
Buildings	the project is a new hospital in Menofya.
Field of Work	Electro-Mechanical Consultant and design of: <ul style="list-style-type: none"> - Electrical systems, Light current systems - Mechanical systems (HVAC, Plumbing, Firefighting) - Medical Gas System - Special systems (Elevators, Earthing system, waste water treatment station)
Supervision	YES

Hospitals



DMANHOR HOSPITAL

Project Data The project comprises of total area 415 m2 of a new hospital includes ground floor, mezzanine floor and first floor.

Location Damnhor; Behira , Egypt

Buildings Total area 415 m2 of a new hospital ground Floor, mezzanine, and 1ST floor.

Field of Work **Electro-Mechanical Consultant and design of:**

- Electrical systems, Light current systems
- Mechanical systems (HVAC, Plumbing, Firefighting)
- Medical Gas System

Supervision NO



DAMRO HOSPITALS

Project Data The project comprises of 300 m2 and 3 floors.

Location Mehalla, Egypt.

Buildings the project comprises of 300 m2 and 3 floors.

Field of Work **Electro-Mechanical Consultant and design of:**

- Electrical systems, Light current systems
- Mechanical systems (HVAC, Plumbing, Firefighting)
- Medical Gas System
- Special systems (Elevators)

Supervision YES

Hospitals



AL SARAIA HOSPITALS

Project Data	The project comprises of 2 floors.
Location	Alexandria, Egypt.
Buildings	The project comprises of 2 floors.
Field of Work	Electro-Mechanical Consultant and design of: <ul style="list-style-type: none"> - Mechanical systems (HVAC, Plumbing, Firefighting) - Special systems (Elevators)
Supervision	YES



ROYAL HOSPITAL

Project Data	Royal Hospital continues to highly successful in providing quality acute care services and with current expansion our scope of services
Location	Alexandria, Egypt.
Buildings	Royal Hospital in Alexandria.
Field of Work	Electro-Mechanical Consultant and design of: <ul style="list-style-type: none"> - Mechanical systems (HVAC, Plumbing, Firefighting) - Medical Gas System - Special systems (Elevators)
Supervision	YES

Hospitals



ANDALOSIA SMOUHA

Project Data	The project comprises of 1700 m ² of high scale hospital and hospital firefighting system
Location	Alexandria, Egypt.
Buildings	The project comprises of 1700 m ² of high scale hospital.
Field of Work	<p><u>4th floor; Electro-Mechanical Consultant and design of:</u></p> <ul style="list-style-type: none"> - Electrical systems, Light current systems - Mechanical systems (HVAC, Plumbing, Firefighting) - Medical Gas System <p><u>all Hospital; Electro-Mechanical Consultant and design of:</u></p> <ul style="list-style-type: none"> - Fire Alarm - Firefighting
Supervision	YES



EI-FAYOUM HOSPITAL

Project Data	The project comprises of 20000 m ² of high scale hospital
Location	Elfayoum, Egypt.
Buildings	The project comprises of 20000 m ² of high scale hospital
Field of Work	<p><u>Electro-Mechanical Consultant and design of:</u></p> <ul style="list-style-type: none"> - Medical Gas System
Supervision	NO

Hospitals



ANDALOSIA ELMAADY CLINICS

Project Data	The project comprises of 1000 m ² of high scale clinics
Location	Elmaady, Cairo, Egypt.
Buildings	the project comprises of 1000 m ² of high scale clinics
Field of Work	Electro-Mechanical Consultant and design of: <ul style="list-style-type: none"> - Electrical systems, Light current systems - Mechanical systems (HVAC, Plumbing, Firefighting)
Supervision	YES



ELSHLALAT HOSPITAL

Project Data	The project comprises of 11700 m ² of high scale hospital
Location	Alexandria, Egypt.
Buildings	the project comprises of 11700 m ² of high scale hospital
Field of Work	Electro-Mechanical Consultant and design of: <ul style="list-style-type: none"> - Mechanical systems (HVAC, Centralized Hot water system, Firefighting) - Oxygen generator system
Supervision	YES

Hospitals



NILE SANATORIUM HOSPITAL

Project Data	the project comprises of floor area 2000 m ²
Location	Cairo, Egypt.
Buildings	the project comprises of floor area 2000 m ²
Field of Work	<u>Electro-Mechanical Consultant and design of:</u> <ul style="list-style-type: none"> - Electrical systems, Light current systems - Mechanical systems (HVAC, Plumbing, Firefighting) - Medical Gas System
Supervision	NO.



AVC HOSPITAL

Project Data	The project comprises of a new facility and operation rooms building in Alexandria for AVC hospital
Location	Smouha, Alexandria, Cairo, Egypt.
Buildings	It comprises of a new facility and operation rooms Building in Alexandria.
Field of Work	<u>Electro-Mechanical Consultant and design of:</u> <ul style="list-style-type: none"> - Mechanical systems (HVAC, Plumbing, Firefighting) - Medical Gas System
Supervision	YES

Hospitals



ELANSARY HOSPITAL

Project Data the project comprises of floor area 300 m², the project has 3 floors

Location Kafr El Zayat, Egypt.

Buildings the project comprises of floor area 300 m², the project Has 3 floors.

Field of Work **Electro-Mechanical Consultant and design of:**

- Electrical systems, Light current systems
- Mechanical systems (HVAC, Plumbing, Firefighting)
- Medical Gas System

Supervision NO



ALPHA HOSPITAL (DR.MOHAMED MOKBEL HOSPITAL)

Project Data The project comprises of a new hospital includes patient rooms, ICUs, and operation rooms, and other Hospital facilities in Alexandria.

Location Alexandria, Egypt.

Buildings the project comprises of a new hospital includes patient rooms, ICUs, Operation rooms, and other hospital facilities in Alexandria.

Field of Work **Electro-Mechanical Consultant and design of:**

- Electrical systems, Light current systems
- Mechanical systems (HVAC, Plumbing, Firefighting)
- Medical Gas System

Supervision YES

Hospitals



TEACHERS HOSPITAL

Project Data The project comprises with total area 1400 m² of a new hospital includes patient rooms, ICUs, and Operation rooms, and other hospital facilities in EGYPT.

Location Aswan, Egypt.

Buildings The project comprises with total area 1400 m² of a new hospital Patient rooms, ICUs, operation rooms, and other Hospital facilities in EGYPT.

Field of Work Electro-Mechanical Consultant and design of:

- Fire alarm
- Firefighting
- Medical Gas System

Supervision NO



KHALED IBN EL WALID HOSPITAL

Project Data The project comprises of a new hospital includes patient rooms, ICUs, and operation rooms, and other hospital Facilities in Alexandria.

Location Alexandria, Egypt.

Buildings The project comprises with total area 1400 m² of a new hospital Patient rooms, ICUs, and operation rooms, and other hospital facilities in EGYPT

Field of Work Electro-Mechanical Consultant and design of:

- Fire alarm
- Firefighting

Supervision NO

Hospitals



SAUDI- GERMAN HOSPITAL (DUBAI)

Project Data SGH- Aims to become the premier healthcare provider and the employer of choice drawing the best talent in the MENA region. The hospital is planning to prove itself as one of the major tertiary care hospitals DUBAI.

Location	DUBAI.
Buildings	the hospital is planning to prove itself as one of The major tertiary care hospitals.
Field of Work	<u>Electro-Mechanical Consultant Supervision of:</u> <ul style="list-style-type: none"> - Landscape and infrastructure, External Electrical lighting system. - Plumbing, irrigation, fountains, storm network)
Supervision	NO



SAUDI- GERMAN HOSPITAL (MEKKAH - SAUDI ARABIA)

Project Data SGH- Aims to become the premier healthcare provider and the employer of choice drawing the best talent in the MENA region. The hospital is planning to prove itself as one of the major tertiary care hospitals in Kingdom of Saudi Arabia.

Location	MEKKAH, Kingdom of Saudi Arabia.
Buildings	The hospital is planning to prove itself as one of the major tertiary care hospitals
Field of Work	<u>Electro-Mechanical Consultant Supervision of:</u> <ul style="list-style-type: none"> - landscape and infrastructure (External Electrical lighting system, - Plumbing, irrigation, fountains, storm network)
Supervision	NO

Hospitals



QOUES HOSPITAL -QENA

Project Data The project comprises of a new hospital includes patient rooms, ICUs, and operation rooms, and other hospital facilities in QENA. The project includes basement, ground and eight floors. The floor area is about 1000 m²

Location QENA, EGYPT.

Buildings It includes basement, ground and eight floors. The floor area is about 1000 m²

Field of Work Electro-Mechanical Consultant and design of:

- HVAC, Firefighting, Plumbing, Electrical, lighting.
- Light current, fire alarm, steam system
- Medical gas systems.

Supervision YES.



LASIK HOSPITAL -ALEXANDRIA

Project Data The project comprises of a new hospital includes patient rooms, ICUs, and operation rooms, and other hospital facilities in Alexandria.

Location ALEXANDRIA, EGYPT.

Buildings The project comprises of a new hospital includes patient rooms, ICUs, and operation rooms, and other hospital facilities.

Field of Work **Electro-Mechanical Consultant Supervision of:**

- Mechanical systems (HVAC, Plumbing, Firefighting)
- Medical Gas System
- Special systems (Elevators)

Supervision YES

Hospitals



ZAT AL TAQWA HOSPITAL

Project Data The project comprises of a new hospital includes patient rooms, ICUs, and operation rooms, and other hospital facilities in KAFR EL ZAYAT, GHARBIA.

Location Kafr El Zayat, Gharbia.

Buildings Hospital which located in KAFR EL ZAYAT, GHARBIA

Field of Work Electro-Mechanical Consultant and design of:

- Electrical systems, Light current systems
- Mechanical systems (HVAC, Plumbing, Firefighting)
- Medical Gas System
- Special systems (Earthing system, waste water treatment station)

Supervision NO



RAS EL TIN GENERAL HOSPITAL

Project Data The project comprises of Ras El Tin hospital which includes patient rooms, ICUs, and operation rooms, Ras El Tin Palace is a palace on the coast of the Mediterranean Sea in Alexandria, Egypt. ... state guests and events in recent years

Location Alexandria, Egypt.

Buildings Hospital which located in Alexandria, Egypt

Field of Work Electro-Mechanical Consultant and design of:

- Medical Gas system.

Supervision NO

Hospitals



AMRIYA HOSPITAL -AMRIYA, ALEX.

Project Data	The project comprises of a new hospital includes patient rooms, ICUs, and operation rooms, and other Hospital facilities in Amriya.
Location	Amriya, Alex. Egypt.
Buildings	Hospital which located in AMRIYA, ALEXANDRIA.
Field of Work	<u>Electro-Mechanical Consultant and design of:</u> <ul style="list-style-type: none"> - Mechanical systems (HVAC, Plumbing, Firefighting) - Medical Gas System
Supervision	YES



ELTAWFEEKYA HOSPITAL

Buildings	The Hospital in Naser City, Cairo
Field of Work	<u>Electro-Mechanical Consultant and design of:</u> <ul style="list-style-type: none"> - Fire alarm - Firefighting
Supervision	NO

Hospitals



AL WATANY EYE HOSPITAL (WEH) -HURGHADA , EYPT

Project Data	The project is one of the leading hospital in Hurghada for Eye health care.
Location	Hurghada, Egypt.
Buildings	Hospital which located in HURGADA
Field of Work	Electro-Mechanical Consultant and design review of: <ul style="list-style-type: none"> - Electrical systems, Light current systems - Mechanical systems (HVAC, Plumbing, Firefighting, Medical Gases)
Supervision	YES



AL SHEROUK HOSPITAL, ALEXANDRIA

Project D	EL SHEROUK HOSPITAL is one of the leader hospitals in Alexandria.
Location	Alexandria, Egypt.
Field of Work	Electro-Mechanical Consultant and design of: <ul style="list-style-type: none"> - Electrical systems, Light current systems - Mechanical systems (HVAC, Plumbing, Firefighting, Medical Gases) - Elevators
Supervision	YES

HOTELS - BUILDING



AL SALAMLEK PALACE

Project Data	The Palace will be renovated and operated as a luxurious five stars hotel which will bring it back to life creating a new royal and touristic hub in Alexandria
Location	Alexandria, Egypt.
Buildings	The Palace will be renovated and operated as a luxurious Five stars hotel.
Field of Work	<u>Electro-Mechanical Consultant and design of:</u> <ul style="list-style-type: none"> - Electrical systems, Light current systems - Mechanical systems (HVAC, Plumbing, Firefighting) - Special systems (Earthing system)
Supervision	YES



LE PASSAGE HOTEL

Project Data	LE PASSAGE Cairo Hotel & Casino is one of the best hotels in Heliopolis, only 2 minutes from The Cairo International Airport. The hotel offers fine restaurants, ...etc
Location	Cairo, Egypt
Buildings	LE PASSAGE Cairo Hotel & Casino is one of the best hotels in Heliopolis,
Field of Work	<u>Electro-Mechanical Consultant and design of:</u> <ul style="list-style-type: none"> - Upgrading Electrical systems infra-structure - Upgrading Light current systems - Telephone system - Mechanical systems (upgrading of infra-structure of Plumbing and Firefighting)
Supervision	YES

HOTELS - BUILDING



ALEX WEST (RADISSON BLUE HOTEL EXTINTION), ALEXANDRIA

Project Data	ALEX WEST RADISSON BLUE is located in Alexandria
Location	Alexandria, Egypt.
Buildings	RADISSON BLUE HOTEL in Alexandria
Field of Work	<u>Electro-Mechanical Consultant and design of:</u> <ul style="list-style-type: none"> - Hot water system. - Heat Exchanger system. - Ventilation system for electrical pump rooms
Supervision	YES

ALEX WEST COMMERCIAL MALL, ALEXANDRIA

Project Data	ALEX WEST is located in Alexandria
Location	Alexandria , Egypt
Buildings	Alex west in Alexandria
Field of Work	<u>Electro-Mechanical Consultant and design of:</u> <ul style="list-style-type: none"> - Electrical systems, Light current systems - Mechanical systems (HVAC, Plumbing, Fire Fighting) - irrigation system
Supervision	YES

HOTELS - BUILDING



MIRAGE HOTEL, MARSA ALAM, RED SEA

Project Data	“Mirage Hotel” is located on the Red Sea Coast of Marsa Alam, considered as one of The main tourist Hotel destinations in Egypt.
Location	Marsa Alam, Red Sea, Egypt
Buildings	“Mirage Hotel” is located on the Red Sea Coast Of Marsa Alam.
Field of Work	<u>Electro-Mechanical Consultant and design of:</u> <ul style="list-style-type: none"> - Electrical systems, Light current systems - Mechanical systems (HVAC, Plumbing, Firefighting) - Special systems (Earthing system, waste water treatment station, Desalination system) - swimming pools, Aqua,
Supervision	NO



SOHAG HOTEL

Project Data	The project comprises of total area 800 m ² (11 Floor Hotel with 2 underground basement garage).
Location	Sohag, Egypt.
Buildings	The project comprises of total area 800 m ² (11 Floor Hotel Underground basement garage).
Field of Work	<u>Electro-Mechanical Consultant and design of:</u> <ul style="list-style-type: none"> - Electrical systems, Light current systems - Mechanical systems (HVAC, Plumbing, Firefighting) - Special systems (Earthing system)
Supervision	NO.

HOTELS - BUILDING



QATR-EL NADA HALL

- Project Data** The qatr El Nada Garden is a great place to listen to live music while savoring on delectable dishes and snacks, all with spectacular views
- Location** Alexandria, Egypt.
- Buildings** The Qatar El Nada Garden is located in Alexandria.
- Field of Work** **Electro-Mechanical Consultant and design of:**
- Electrical systems, Light current systems
 - Mechanical systems (HVAC, Plumbing, Firefighting)
 - Special systems (Earthing system)
 - swimming pools
- Supervision** YES.



THE SMALL PALACE

- Project Data** the Palace is a part of Al Salamlek Palace which will be renovated and operated as a luxurious five stars hotel which will bring it back to life creating a new royal and touristic hub in Alexandria
- Location** Alexandria, Egypt.
- Buildings** the Palace is a part of Al Salamlek Palace in Alexandria.
- Field of Work** **Electro-Mechanical Consultant and design of:**
- Electrical systems, Light current systems
 - Mechanical systems (HVAC, Plumbing, Firefighting)
 - Special systems (Earthing system)
- Supervision** YES.

HOTELS - BUILDING



ANTONIADS HOTEL, ALEXANDRIA (MINISTRY OF HOUSING)

Project Data ANTONIADAS HOTEL is in SMOHA, ALEXANDRIA

Location SMOHA, Alexandria

Field of Work Mechanical Consultant and design of:
 - Mechanical systems (HVAC, Plumbing, Fire Fighting and swimming pools)

Supervision YES.



ANTONIADS HALL, ALEXANDRIA (MINISTRY OF HOUSING)

Project Data ANTONIADAS HALL is in SMOUHA, ALEXANDRIA

Location SMOHA, Alexandria

Field of Work Mechanical Consultant and design of:
 - Mechanical systems (HVAC, Plumbing, Fire Fighting)

Supervision YES.

HOTELS - BUILDING



GRAND BALLROOM, AL MONTAZA

Project Data	The Palace is a part of Al Salamlek Palace which will be renovated and operated as a Ballroom which will bring it back to life with all kind of joy and parties including weddings and Local and global conferences
Location	Al Montaza, Alexandria, Egypt.
Buildings	The Palace is a part of Al Salamlek Palace in Alexandria.
Field of Work	<u>Electro-Mechanical Consultant and design of:</u> <ul style="list-style-type: none"> - Electrical systems, Light current systems - Mechanical systems (HVAC, Plumbing, Firefighting) - Special systems (Earthing system)
Supervision	YES



IB HOTEL SOMALILAND, SOMALIA

Project Data	IB HOTEL SOMALILAND is a hotel in SOMALIA.
Buildings	HOTEL in Somalia
Field of Work	<u>Electro-Mechanical Consultant and design of:</u> <ul style="list-style-type: none"> - Electrical systems, Light current systems. - Mechanical systems (HVAC system)
Supervision	NO

MALLS- BUILDING



SEVENTY MALL

Project Data SEVENTY MALL is a commercial mall with many facilities and services that meet the needs of customers and its Strategic location in the heart of the New Administrative Capital.

Location New Capital, New Cairo, Egypt

Buildings SEVENTY MALL is a commercial mall with many facilities in New Administration Capital

Field of Work Electro-Mechanical Consultant and design of:

- Electrical systems, Light current systems
- Mechanical systems (HVAC, Plumbing, Firefighting)
- Special systems (Earthing system, Elevator, Escalator, Solar system, Parking system)

Supervision YES.



ARX MALL -5th SETTLEMENT

Project Data ARX MALL is one of the newest big mall in 5th settlements, the mall offers a renowned collection from various mono-brand and multi brand stores that covers all different categories Men's and ladies' wear, watchers, in addition to one administration floor.

Location 5TH settlement New Cairo, Egypt

Buildings ARX MALL is one of the newest big mall in 5th settlements.

Field of Work Electro-Mechanical Consultant and design of:

- Electrical systems, Light current systems
- Mechanical systems (HVAC, Plumbing, Firefighting)
- Special systems (Earthing system, Elevator, Escalator)

Supervision YES

MALLS- BUILDING



BLUE MALL – NEW CAPITAL

Project Data BLUE MALL in the New Administrative Capital. it is executed on 3320 m², one of the best commercial complexes and one of Four Seasons Group's projects, which have always been keen to provide the best as the project provides the best facilities and services that meet the needs of visitors.

Location New Administrative Capital, Cairo, Egypt

Buildings BLUE MALL is a commercial mall with many facilities

In New Administration with area of 3320 m².

Field of Work **Electro-Mechanical Consultant and design of:**

- Electrical systems, Light current systems
- Mechanical systems (HVAC, Plumbing, Firefighting)
- Special systems (Earthing system, Elevator, Escalator, Solar system, Parking system)

Supervision YES.



EVIRA MALL –NEW CAPITAL

Project Data EVIRA MALL is located in the New Administrative Capital, in a very distinctive strategic location, in the heart of the capital in the Downtown area, which is an area characterized by its many services such as the banking area, the corporate sector and the Opera House, so it is located in the center of the capital, so this is a vital area. MALL is one of the newest big mall in NEW CAPITAL, the mall offers a renowned collection from various mono-brand and multi brand stores that covers all different categories Men's and ladies' wear, watchers, in addition to one administration floor.

Location New Administrative Capital, Cairo, Egypt

Buildings EVIRA MALL is a commercial mall with many facilities

In New Administration.

Field of Work **Electro-Mechanical Consultant and design of:**

- Electrical systems, Light current systems
- Mechanical systems (HVAC, Plumbing, Firefighting)
- Special systems (Earthing system, Elevator, Escalator, Solar system, Parking system)

Supervision NO.

MALLS- BUILDING



RIXOS MALL, NEW ADMINISTRATIVE CAPITAL

Project Data RIXOZ MALL, it is located in the Downtown area of Administrative Capital, as it is one of the most dynamic areas so any project within it has a more successful chance of success. It occupies an area of 3,000 square meters. It is designed to make it an integrated complex of everything whether for shopping or entertainment lovers

Location New Administrative Capital, Cairo, Egypt

Buildings RIXOS MALL is a commercial mall with many facilities In New Administration.

Field of Work Electro-Mechanical Consultant and design of:

- Electrical systems, Light current systems
- Mechanical systems (HVAC, Plumbing, Firefighting)
- Special systems (Earthing system, Elevator, Escalator, Solar system, Parking system)

Supervision YES.



ROYAL MALL

Project Data The project comprises three floors mall.

Location Alexandria, Egypt.

Buildings The project comprises three floors mall.

Field of Work Electro-Mechanical Consultant and design of:

- Electrical systems, Light current systems
- Mechanical systems (HVAC, Plumbing, Firefighting)

Supervision NO.

MALLS- BUILDING



RASHID MALL

Project Data The project comprises of total area 645 m2, Consists of (Ground & First floor and 3 Floor typical)

Location Rashid, Egypt

Buildings The project comprises of total area 645 m2, Consists of Ground & First floor and 3 Floor typical)

Field of Work Electro-Mechanical Consultant and design of:
 - Electrical systems, Light current systems
 - Mechanical systems (HVAC, Plumbing, Firefighting)

Supervision NO.



VISTA MALL, MARINA

Project Data The project comprises of total area 10000 m2 which is a part of Marina in North Coast of Egypt

Location North Coast, EGYPT.

Buildings The project comprises of total area 10000 m2 which is A part of Marina.

Field of Work Electro-Mechanical Consultant and design of:
 - Fire Alarm
 - Fire Fighting

Supervision YES

MALLS- BUILDING



ZAHA MALL, NEW CAPITAL, EGYPT

Project Data ZAHA MALL in

New Administrative Capital. The first destination of New Cairo's residents, it is located in a privileged location in the Administrative Capital, as it will soon become a destination that attracts all residents seeking entertainment, shopping and buying the products of the world's most famous brands.

Location New Administrative Capital, Cairo, Egypt

Buildings ZAHA MALL is commercial mall with many facilities in New Administration

Field of Work **Electro-Mechanical Consultant Supervision of:**

- Electrical systems, Light current systems
- Mechanical systems (HVAC, Plumbing, Firefighting)
- Special systems (Earthing system, Elevator, Escalator, Solar system, Parking system)

Supervision YES



ITC MALL, NEW CAPITAL, EGYPT

Project Data ITC MALL in the New Administrative Capital. The first destination of New Cairo's residents, it is located in the Administrative Capital, as it will soon become a destination that attracts all residents seeking entertainment, shopping and buying the products of the world's most famous brands.

Location New Administrative Capital, Cairo, Egypt

Buildings ITC MALL is commercial mall with many facilities In New Administration.

Field of Work **Electro-Mechanical Consultant and Re-design of:**

- Electrical systems, Light current systems
- Mechanical systems (HVAC, Plumbing, Firefighting)
- Special systems (Earthing system, Elevator, Escalator, Solar system, Parking system)

Supervision YES.

MALLS- BUILDING



PIXEL MALL, NEW ADMINISTRATIVE CAPITAL

Project Data PIXEL MALL is one of the newest big mall in NEW CAPITAL, The first technology mall in the New Administrative Capital, in the Down Town area near Al Masa Mall. the mall offers a renowned collection from various mono-brand And multi brand stores that covers all different categories Men’s and ladies’ wear, watchers, in additional to one administration floor.

Location New Administrative Capital, Cairo, Egypt

Buildings PIXEL MALL is commercial mall with many facilities In New Administration.

Field of Work Electro-Mechanical Consultant and design of:

- Electrical systems, Light current systems
- Mechanical systems (HVAC, Plumbing, Firefighting)
- Special systems (Earthing system, Elevator, Escalator, Solar system, Parking system)

Supervision NO.



DORADO MALL, NEW ADMINISTRATIVE CAPITAL

Project Data DORADO MALL is one of the newest big mall in NEW CAPITAL, The mall in the New Administrative Capital, in the Down Town area near Al Masa Mall. the mall offers a renowned collection from various mono-brand and multi brand stores that covers all different categories Men’s and ladies’ wear, watchers, in additional to one administration floor.

Location New Administrative Capital, Cairo, Egypt

Buildings DORADO MALL is commercial mall with many facilities In New Administration.

Field of Work Electro-Mechanical Consultant and design of:

- Electrical systems, Light current systems
- Mechanical systems (HVAC, Plumbing, Firefighting)
- Special systems (Earthing system, Elevator, Escalator, Solar system, Parking system)

Supervision NO.

MALLS- BUILDING



SMART MALL, NEW ADMINISTRATIVE CAPITAL

Project Data SMART MALL, it is located in the Downtown area of Administrative Capital, it occupies an area of 4,000 square meters (ground +5 floors).It is designed to make it an integrated complex of everything whether for shopping .

Location New Administrative Capital, Cairo, Egypt
Buildings SMART MALL is commercial mall with many facilities In New Administration.

Field of Work Electro-Mechanical Consultant and design of:

- Electrical systems, Light current systems
- Mechanical systems (HVAC, Plumbing, Firefighting)
- Special systems (Earthing system, Elevator, Escalator, Solar system, Parking system)

Supervision YES .



TRIO V MALL, NEW ADMINISTRATIVE CAPITAL

Project Data TRIO V MALL, in the Administrative Capital, occupies an area of 7,000 square meters It is designed to make it an integrated complex of everything whether for shopping.

Location New Administrative Capital, Cairo, Egypt

Buildings TRIO V MALL is commercial mall with many facilities In New Administration.

Field of Work Electro-Mechanical Consultant and design of:

- Electrical systems, Light current systems
- Mechanical systems (HVAC, Plumbing, Firefighting)
- Special systems (Earthing system, Elevator, Escalator, Solar system, Parking system)

Supervision NO.

MALLS- BUILDING



MALL 90 -5th SETTLEMENT NEWCAIRO

Project Data MALL 90 is one of the newest big mall in 5th settlements, the mall offers a renowned collection from various mono-brand and multi brand stores that covers all different categories Men’s and ladies’ wear, watchers, ...etc.

Location 5TH settlement New Cairo, Egypt

Buildings MALL 90 is one of the newest big mall In NEW CAIRO, 5TH SETTLEMENT.

Field of Work Electro-Mechanical Consultant and design of:

- Electrical systems, Light current systems
- Mechanical systems (HVAC, Plumbing, Firefighting)
- Special systems (Earthing system)

Supervision NO.



DOWN TOWN MALL, NEW ADMINISTRATIVE CAPITAL

Project Data DOWN TOWN MALL is commercial mall with Many facilities in New Administration.

Location New Administration, Egypt

Buildings DOWN TOWN MALL is commercial mall.

Field of Work Electro-Mechanical Consultant and design of:

- Electrical systems, Light current systems
- Mechanical systems (HVAC, Plumbing, Firefighting)
- Special systems (Earthing system, Elevator, Escalator, Solar system, Parking system)

Supervision NO.

MALLS- BUILDING



TURATH MALL, NEW ADMINISTRATIVE CAPITAL, CAIRO,

Project Data TURATH MALL is commercial mall in New Administration

Location NEW CAPITAL, Egypt

Buildings iT is commercial mall with many facilities
 In New Administration.

Field of Work Electro-Mechanical Consultant and design of:

- Electrical systems, Light current systems
- Mechanical systems (HVAC, Plumbing, Firefighting)
- Special systems (Earthing system, Elevator, Escalator, Solar system, Parking system)

Supervision NO.



ELREHAB MALL, 5TH SETTLEMENT ,EL REHAB CITY

Project Data EL REHAB MALL is commercial mall in 5TH Settlement.

Location 5th settlement.

Buildings ELREHAB MALL is one of the newest mall
 In 5th settlements- El rehab City.

Field of Work Electro-Mechanical Consultant and design of:

- Electrical systems, Light current systems
- Mechanical systems (HVAC, Plumbing, Firefighting)
- Special systems (Earthing system, Elevator, Escalator, Solar system, Parking system)

Supervision NO.

MALLS- BUILDING



OXYGEN O2 MALL, NEW ADMINISTRATIVE CAPITAL

Project Data	OXYGEN O2 MALL is one of the newest malls New Administrative Capital.
Buildings	OXYGEN O2 MALL in new capital.
Field of Work	<p>Electro-Mechanical Consultant and design of:</p> <ul style="list-style-type: none"> - Electrical systems, Light current systems - Mechanical systems (HVAC, Plumbing, Firefighting) - Special systems (Earthing system, Elevator, Escalator, Solar system, Parking system)
Supervision	NO.



AL AZIZ MALL, NEW ADMINISTRATIVE CAPITAL

Project Data	AL AZIZ MALL is one of the newest malls New Administrative Capital
Buildings	AL AZIZ MALL New Administrative Capital.
Field of Work	<p>Electro-Mechanical Consultant and design of:</p> <ul style="list-style-type: none"> - Electrical systems, Light current systems - Mechanical systems (HVAC, Plumbing, Firefighting) - Special systems (Earthing system, Elevator, Escalator, Solar system, Parking system)
Supervision	NO.

MARK MALL, NEW ADMINISTRATIVE CAPITAL

Project Data MARK MALL is one of the newest malls
New Administrative Capital.

Buildings MARK MALL in new capital.

Field of Work Electro-Mechanical Consultant and design of:

- Electrical systems, Light current systems
- Mechanical systems (HVAC, Plumbing, Firefighting)
- Special systems (Earthing system, Elevator, Escalator, Solar system, Parking system)

Supervision NO.



BANKS BUILDING



BANK ABC 5th SETTLEMENT, NEW CAIRO

Project Data	The project comprises of Bank ABC (incorporated as Arab Banking Corporation B.S.C) headquarter in EGYPT
Location	5 th Settlement, New Cairo, Cairo - Egypt
Buildings	ABC Bank headquarter in EGYPT
Field of Work	<u>Electro-Mechanical Contractor Consultant of:</u> <ul style="list-style-type: none"> - Electrical systems, Light current systems - Mechanical systems (HVAC, Plumbing, Firefighting) - Special systems (Earthing system, Elevator)
Supervision	NO.



BANK AUDI 5th SETTLEMENT, NEW CAIRO

Project Data	The project comprises of Bank Audi headquarter in EGYPT
Location	5 th Settlement, New Cairo, Cairo - Egypt
Buildings	Bank Audi headquarter in EGYPT
Field of Work	<u>Electro-Mechanical Contractor Consultant of:</u> <ul style="list-style-type: none"> - Electrical systems, Light current systems - Mechanical systems (HVAC, Plumbing, Firefighting) - Special systems (Earthing system, Elevator)
Supervision	NO

BANKS BUILDING



CIB - COMMERCIAL INTERNATIONAL BANK CIB EGYPT ABBAS ELAKKAD ST

Project Data	The project comprises of CIB - Commercial International Bank CIB Egypt- Abbas Elakkad branch
Location	Abbas Elakkad St., Cairo, Egypt
Buildings	CIB - Commercial International Bank CIB Egypt- Abbas Elakkad branch
Field of Work	<u>Electro-Mechanical Consultant and design of:</u> - Electrical systems, Light current systems - Mechanical systems (HVAC, Plumbing, Firefighting)
Supervision	NO.



SUEZ CANAL BANK -GIZA BRANCH Giza

Project Data	The project comprises of Suez Canal Bank – Giza branch in EGYPT
Location	Giza- Egypt
Buildings	Suez Canal Bank – Giza branch in EGYPT
Field of Work	<u>Electro-Mechanical Consultant and design of:</u> - Electrical systems, Light current systems - Mechanical systems (HVAC, Plumbing, Firefighting)
Supervision	NO.

ANTONIADS BANK AREA, SMOHA ALEXANDRIA (MINSTRY OF HOUSING)

Project Data ANTONIADS BANK AREA is located in SMOHA, ALEXANDRIA

Location SMOHA, ALEXANDRIA

Field of Work **Mechanical Consultant and design of:**
- Mechanical systems (Fire Fighting)

Supervision YES



RESORTS



SELENA BAY RESORT, HURGHADA RED SEA

Project Data "SELENA BAY RESORT" is located on the Red Sea Coast of Hurghada, 9 km North of the city, Hurghada considered as one of the main Tourist destinations in Egypt.

Location Hurghada Red Sea, Egypt

Buildings "SELENA BAY RESORT" .

Field of Work Electro-Mechanical Consultant and design of:

- Electrical systems, Light current systems
- Mechanical systems (HVAC, Plumbing, Firefighting)
- Special systems (Earthing system, waste water treatment station, Desalination system).
- Infrastructure of (Electrical, light current, Firefighting, irrigation, water supply, drainage)
- Swimming pools and Aqua

Supervision YES.



CASCADIA RESORT - NORTH COAST

Project Data CASCADIA Resort is one of the biggest resorts In Egypt which contains (offices, Shops, Kids area ...etc.).

Location North Coast, Egypt

Buildings CASCADIA Resort.

Field of Work Electro-Mechanical Consultant and design of:

- Electrical systems, Light current systems
- Mechanical systems (HVAC, Plumbing, Firefighting)
- Special systems (Earthing system).
- Infrastructure of (Electrical, light current, Firefighting, irrigation, water supply, drainage)
- Swimming pools

Supervision NO.

RESORTS



EL TERFEHIYA (NEW CITY ALAMEIN)

Project Data The project comprises of total area 30790 m2, of the tower Consists of (Upper Ground & Lower Ground and 42 Floor typical) distributed in Residential, commercial and Entertainment buildings.

Location New City Alamein, Egypt

Buildings The project comprises of total area 30790 m2.

Field of Work Electro-Mechanical Consultant and design of:
 - Storm and irrigation drain network.

Supervision NO



PAGOUSH - MATROUH, EGYPT

Project Data PAGOUSH Resort is one of the resorts in north coast in Egypt which contains Villas and resort buildings, shops, kid's area, swimming pools, aqua...etc.

Location Matrouh, Egypt

Buildings PAGOUSH Resort is one of the resorts in North Coast of Egypt.

Field of Work Electro-Mechanical Consultant and design of:

- Electrical systems, Light current systems
- Mechanical systems (HVAC, Plumbing, Firefighting)
- Special systems (Earthing system).
- Infrastructure of (Electrical, light current, Firefighting, irrigation, water supply, drainage)
- Swimming pools

Supervision NO.

RESORTS



MATANGI – MARSALA ALLAM

Project Data Matangi is the new project located in Oriental Coast which is 30 mins from Marsa Allam airport and 100 min from Hurghada airport. The project area is about 150000 m². The project includes, luxury areas, villas, residential buildings, restaurant, utility area ...etc.

Location Marsa Allam, Egypt

Buildings the project area is about 150000 m².

Field of Work Electro-Mechanical Consultant and design of:

- Electrical systems, Light current systems
- Mechanical systems (HVAC, Plumbing, Firefighting)
- Special systems (Earthing system).
- Infrastructure of (Electrical, light current, Firefighting, irrigation, water supply, drainage)

Supervision NO



MARSEILIA BLUE-BAY ELEIN EL-SOKHNA

Project Data The project size is about 58 acres and it is located on The most distinctive point along the Red sea.

Location Elein ELsokhna, Egypt.

Buildings The project size is about 58 acres and it is located On red sea.

Field of Work Electro-Mechanical Consultant and design of:

- Swimming pools and Ponds

Supervision NO.

RESORTS



MARSEILIA ALAM EL ROUM – RESORT

Project Data Marseilia Alam ElRoum – Aqua park is a choice when it comes to enjoying the hottest vacation spot lying 290 km west of Alexandria and 524 km from Cairo.

Location Alexandria, Egypt

Buildings Marseilia Alam ElRoum – Aqua park it lying 290 km West of Alexandria.

Field of Work Electro-Mechanical Consultant and design of:

- Electrical systems, Light current systems
- Mechanical systems (HVAC, Plumbing, Firefighting)
- Special systems (Earthing system).
- Swimming pools

Supervision NO.



MARSEILIA BEACH4

Project Data The project comprises of total area 546,000 m2, located 124.5 km west of Alexandria.

Location Alexandria, Egypt

Buildings The project comprises of total area 546,000 m2.

Field of Work Electro-Mechanical Consultant and design of:

- Fire alarm
- Firefighting
- Swimming pools and ponds

Supervision NO.

RESORTS



MARASSI SIDI ABDEL RAHMAN

Project Data Marassi is set to become the North Coast's first upscale international destination and is on fast tracks to establish itself as a world-class tourism, leisure and golfing holiday destination.

Location Sidi Abdel Rahman, Egypt

Buildings Marassi is located in sisi Abdel Rahman.

Field of Work Electro-Mechanical Consultant and design of:
 - Irrigation system design

Supervision NO



KAZABIANCA RESORT

Project Data KAZABIANCA Resort is one of the biggest resorts in Egypt which contains residential buildings, shops, kids' area, swimming pools, aqua, etc.

Location North Coast, Egypt

Buildings it is one of the biggest resorts in North coast, Egypt.

Field of Work Electro-Mechanical Consultant and design of:
 - Renewal of the waste water treatment plant.

Supervision YES.

RESORTS



MINA 3 TOURISTIC VILLAGE

Project Data Mina 3 is a touristic village, it is a choice when it comes to enjoying the hottest vacation spot lying 79km Alex. Matrouh Desert Rd., North Coast, 40 villas and chalets in different shapes and areas, green areas, all units are designed with a distinctive view of the Mediterranean Sea.

Location Alexandria, Egypt.

Buildings Mina 3 is a touristic village; is located in Alexandria.

Field of Work Electro-Mechanical Consultant and design of:

- Swimming pools re-habitation.

Supervision YES.



SEA VIEW NORTH COAST

Project Data Sea View is an endless journey of luxury. With the mystic blend of sea charm, elegance, beauty and art, along with 300.000 m2 beach, The fine dining, the Dancing Fountain, or the waterfalls, aren't even a fair description to start off with, includes Plateau Sports Club, Beach Jogging Track , Horizontal Swimming Pool & Plateau Aqua Park.

Location Alexandria - Matrouh Road at Sidi Abd Elrahman

Buildings Sea View is an endless journey of luxury.

Field of Work Electro-Mechanical Consultant and design of:

- Design of swimming pools.

Supervision NO.

RESORTS



NEAMA TOWN - RESORT, SHARM EL ASHEIKH, EGYPT

Project Data NEAMA TOWN in SHARM EL ASH SHEIKH , EGYPT

Location SHARM EL ASH SHEIKH, EGYPT

Field of Work Electro-Mechanical Consultant and design of:

- Infrastructure system of (Storm system, Fire Fighting system
 Drainage system- Water Supply System irrigation System- electrical -data system – CCTV system)
- Electro-mechanical works for the Club house building including (HVAC-Fire Fighting-Plumbing- Electrical power &Light current) Works.

Supervision YES.



SOUL-LUXURY BEACH RESORT, NORTH COAST, EGYPT.

Project Data Soul Luxury Beach Resort in NORTH COAST

Location SOUL LUXURY BEACH RESORT – in NORTH COAST

Buildings Beach house Townhouses Villas: area starts from 193 sqm.

Field of Work Electro-Mechanical Consultant and design of :

- Electrical systems, Light current systems
- Mechanical systems (HVAC, Plumbing, Firefighting) For Lif station, under Ground parking & ADD rooms.

Supervision NO.

RESORTS

GANNA VILLAGE – MARSA ALLAM, EGYPT.

Project Data the project is one of AMARINA Projects in Marsa Alam.

Location MARSA ALAM, EGYPT.

Field of Work Electro-Mechanical Consultant and design of:

- Design Review of Infrastructure for phase 1 (Electrical, light current, Firefighting, irrigation, water supply, drainage)
- Design of Infrastructure for phase 2 (Electrical, light current, Firefighting, irrigation, water supply, drainage)
- Design of mechanical systems and Central hot water system (Domestic-swimming pools -Aqua).
- Design of Hot Water Boiler room
- Design of the main Laundry and main kitchen

Supervision YES.



RESORTS

FANTASIA RAS SUDR VILLAGE

Project Data FANTASIA RAS SUDR VILLAGE is a touristic village, it is a choice when it comes to enjoying the hottest vacation, have villas and chalets in different shapes and areas, green areas,

Location RAS SUDR, Egypt.

Buildings FANTASIA village; is located in RAS SUDR.

Field of Work **Electro-Mechanical Consultant and design of:**

- Electromechanical works for (Restaurant & reception)
- Design review for all Electrotechnical works

Supervision NO.



PROF.DR. WALID ABDELGHAFFAR

COMMERCIAL BUILDINGS



L SQUARE CAFÉS, GREEN PLAZA

Project Data	L Square is located in Green plaza, Alexandria Consists of (Ground and First floor)
Location	Green Plaza, Alexandria, Egypt
Buildings	L Square is located in Green plaza, .
Field of Work	<u>Electro-Mechanical Consultant and design of:</u> <ul style="list-style-type: none"> - Electrical systems, Light current systems - Mechanical systems (HVAC, Plumbing, Firefighting) - Special systems (Earthing system).
Supervision	NO



BROCCOLI RESTURANT

Project Data	BROCCOLI Restaurant in elmaady is one of the Broccoli chain in EGYPT
Location	Zahraa Al Maadi Plaza, Egypt
Buildings	BROCCOLI Restaurant in elmaady .
Field of Work	<u>Electro-Mechanical Consultant and design of:</u> <ul style="list-style-type: none"> - Electrical systems, Light current systems - Mechanical systems (HVAC, Plumbing, Firefighting)
Supervision	YES.

COMMERCIAL BUILDINGS



HALOMY FURNITURE

Project Data HALOMY FURNITURE is located in Alexandria .

Location Alexandria, Egypt

Buildings The project comprises of total area 400 m2.

Field of Work Electro-Mechanical Consultant and design of:

- Electrical systems, Light current systems
- Mechanical systems (HVAC, Plumbing, Firefighting)

Supervision YES.



THE ROYAL HOUSE, ALEXANDRIA, EGYPT

Project Data the Royal House is on the coast at the far North-East end of Montazah district, and it is a favorite tourist's site renowned for its royal heritage and vast gardens

Location Alexandria, Egypt.

Buildings the Royal House is on the coast at the far North-East end of Montazah.

Field of Work Electro-Mechanical Consultant and design of:

- Electrical systems, Light current systems
- Mechanical systems (HVAC, Plumbing, Firefighting)
- Special systems (Earthing system, Elevator)

Supervision YES.

NEGM CERAMIC SHOW ROOM AND WAREHOUSE BUILDING, 6th OF OCTOBER, EGYPT

Project Data NEGM CERAMIC SHOW ROOM AND WAREHOUSE BUILDING, 6th OF OCTOBER, EGYPT

Location 6th OF OCTOBER, EGYPT

Buildings SHOW ROOM and WAREHOUSE

Field of Work Electro-Mechanical Consultant and design of:
- Electrical systems, Light current systems
- Mechanical systems (HVAC, Plumbing, Firefighting)

Supervision YES.



**NEGM
TILES**

ADMINISTRATION BUILDINGS



SASCO- (ADMINISTRATION BUILDING)

Project Data	The project is an administration building In Bahrein, the land area is 2625 m ² .
Location	Bahrein
Buildings	the total area is 2625 m ²
Field of Work	<u>Electro-Mechanical Consultant and design of:</u> <ul style="list-style-type: none"> - Electrical systems, Light current systems - Mechanical systems (HVAC, Plumbing, Firefighting) - Special systems (Earthing system, Elevator, Escalator, Solar system, Parking system)
Supervision	NO.



THE MARK PROJECT, NEW CAPITAL

Project Data	THE MARK PROJECT is an administration building in MU2-R7 area in New.
Location	New capital, New Cairo, Egypt
Buildings	THE MARK PROJECT is an administration building In MU2-R7 area in New Administration.
Field of Work	<u>Electro-Mechanical Consultant and design of:</u> <ul style="list-style-type: none"> - Electrical systems, Light current systems - Mechanical systems (HVAC, Plumbing, Firefighting) - Special systems (Earthing system, Elevator, Escalator, Solar system, Parking system)
Supervision	NO.

ADMINISTRATION BUILDINGS



ADMINISTRATION BUILDING – A26-B2

Project Data	26-B2 is an Administration Building in Business Park in New Capital, EGYPT.
Location	New Capital, Cairo, Egypt
Buildings	It is an administration building in Finance and business Area in area in New Administration.
Field of Work	<u>Electro-Mechanical Consultant and design of:</u> <ul style="list-style-type: none"> - Electrical systems, Light current systems - Mechanical systems (HVAC, Plumbing, Firefighting) - Special systems (Earthing system, Elevator, Escalator, Solar system, Parking system)
Supervision	NO.



ADMINISTRATION BUILDING – 26-A5

Project Data	26-A5 is an Administration Building in Business Park in New Capital, EGYPT.
Location	New Capital, Cairo, Egypt
Buildings	It is an administration building in Finance and business Area in area in New Administration.
Field of Work	<u>Electro-Mechanical Consultant and design of:</u> <ul style="list-style-type: none"> - Electrical systems, Light current systems - Mechanical systems (HVAC, Plumbing, Firefighting) - Special systems (Earthing system, Elevator, Escalator, Solar system, Parking system)
Supervision	YES.

ADMINISTRATION BUILDINGS



ADMINISTRATION BUILDING- AUDIO

Project Data	AUDIO BUILDING is head office of AUDIO company in Cairo.
Location	Cairo, Egypt
Buildings	It is head office of AUDIO company in Cairo.
Field of Work	<p><u>Electro-Mechanical Consultant and design of:</u></p> <ul style="list-style-type: none"> - Electrical systems, Light current systems - Mechanical systems (HVAC, Plumbing, Firefighting) - Special systems (Earthing system, Elevator, Solar system)
Supervision	YES.



ADMINISTRATION BUILDING- CS10

Project Data	CS10 is an Administration Building in Business Park in New Capital, EGYPT
Location	NEW CAPITAL, Egypt
Buildings	It is one of the big administrations building in New Capital.
Field of Work	<p><u>Electro-Mechanical Consultant and design of:</u></p> <ul style="list-style-type: none"> - Electrical systems, Light current systems - Mechanical systems (HVAC, Plumbing, Firefighting) - Special systems (Earthing system, Elevator, Solar system)
Supervision	NO

ADMINISTRATION BUILDINGS



AMAZ TOWER BUILDING

Project Data	AMAZ TOWER is a Commercial & Administration Building in New Capital, EGYPT.
Location	NEW CAPITAL, Egypt
Buildings	It is a Commercial & administration building in New Capital.
Field of Work	<u>Electro-Mechanical Consultant and design of:</u> <ul style="list-style-type: none"> - Electrical systems, Light current systems - Mechanical systems (HVAC, Plumbing, Firefighting) - Special systems (Earthling system, Elevator, escalator, Solar system)
Supervision	NO



DOWN TOWN ADMINISTRATION BUILDING

Project Data	DOWN TOWN is a Commercial & Administration Building in New Capital.
Location	NEW CAPITAL, Egypt
Buildings	It is a Commercial & administration building in New Capital.
Field of Work	<u>Electro-Mechanical Consultant and design of:</u> <ul style="list-style-type: none"> - Electrical systems, Light current systems - Mechanical systems (HVAC, Plumbing, Firefighting) - Special systems (Earthling system, Elevator, escalator, Solar system)
Supervision	NO.

ADMINISTRATION BUILDINGS



PYLON ADMINISTRATION BUILDING

Project Data	PYLON is an Administration building in New Capital.
Location	NEW CAPITAL, Egypt
Buildings	It is an administration building in New Capital.
Field of Work	<u>Electro-Mechanical Consultant and design of:</u> <ul style="list-style-type: none"> - Electrical systems, Light current systems - Mechanical systems (HVAC, Plumbing, Firefighting) - Special systems (Earthing system, Elevator, escalator, Solar system)
Supervision	NO



CLOCK 3 TOWER ADMINISTRATION BUILDING

Project Data	CLOCK 3 TOWER is an administration building in new capital.
Location	New capital, new Cairo, Egypt
Buildings	It is an administration building in New Capital.
Field of Work	<u>Electro-Mechanical Consultant and design of:</u> <ul style="list-style-type: none"> - Electrical systems, Light current systems - Mechanical systems (HVAC, Plumbing, Firefighting) - Special systems (Earthing system, Elevator, escalator, Solar system)
Supervision	NO.

ADMINISTRATION BUILDINGS



CLOCK 4 TOWER ADMINISTRATION BUILDING

Project Data	CLOCK TOWER 4 is an administration building in new capital.
Location	New capital, new Cairo, Egypt
Buildings	It is an administration building in New Capital.
Field of Work	<p>Electro-Mechanical Consultant and design of:</p> <ul style="list-style-type: none"> - Electrical systems, Light current systems - Mechanical systems (HVAC, Plumbing, Firefighting) - Special systems (Earthing system, Elevator, escalator, Solar system)
Supervision	NO.



MANTRAC ADMINISTRATION BUILDING, STORES AND WORKSHOP

Project Data	The project comprises of the total area 25000 m2, distributed on Administration building (basement, First, Second and Third), store and workshop
Location	10 th of Ramadan, Egypt.
Buildings	the total area 25000 m2 Administration building (basement, First, Second and Third) store and workshop
Field of Work	<p>Electro-Mechanical Consultant and design of:</p> <ul style="list-style-type: none"> - Electrical systems, Light current systems - Mechanical systems (HVAC, Plumbing, Firefighting) - Special systems (Earthing system, Elevator)
Supervision	YES.

ADMINISTRATION BUILDINGS



ATC ADMINISTRATION HEAD OFFICE -5th SETTLEMENT

Project Data	The project is a show room, administration building of two floors, waiting area, parking area, stores, Workshops for mechanical, electrical, and body work.
Location	Alexandria, Egypt
Buildings	it is the main building of ATC company in EGYPT
Field of Work	<u>Electro-Mechanical Consultant and design of:</u> <ul style="list-style-type: none"> - Electrical systems, Light current systems - Mechanical systems (HVAC, Plumbing, Firefighting) - Special systems (Earthing system)
Supervision	NO.



REDCON ADMINISTRATIVE BUILDING (174) 5th SETTLEMENT

Project Data	The project comprises one of the biggest Administrative building of Redcon development co. With total area 3765 m2 in new Cairo Egypt.
Location	New Cairo, EGYPT
Buildings	Administrative building of Redcon development Co. with total area 3765 m2 in new Cairo Egypt.
Field of Work	<u>Electro-Mechanical Consultant and design of:</u> <ul style="list-style-type: none"> - Electrical systems, Light current systems - Mechanical systems (HVAC, Plumbing, Firefighting) - Special systems (Earthing system)
Supervision	NO

ADMINISTRATION BUILDINGS



EL SEWEDY FACTORY (ADMINISTRATION BUILDING)

Project Data	The project comprises of the total area 16500 m2 & one of the biggest factories in Egypt, distributed On Administration building, storages, pump room ...etc.
Location	10 th of Ramadan, Egypt
Buildings	the total area 16500 m2 & one of the biggest factories in Egypt
Field of Work	Electro-Mechanical Consultant and design of: <ul style="list-style-type: none"> - Electrical systems, Light current systems - Mechanical systems (HVAC, Plumbing, Firefighting) - Special systems (Earthing system)
Supervision	YES



MINISTRY OF JUSTICE - MINISTRIES BUILDING

Project Data	The project comprises the main building of Ministry Of Justice in New Capital- Governmental district.
Location	New Capital, EGYPT
Buildings	the main building in New Capital- Governmental district.
Field of Work	(Electro-Mechanical Consultant) and Shop drawing of <ul style="list-style-type: none"> - Electrical systems, Light current systems - Mechanical systems (HVAC, Plumbing, Firefighting)
Supervision	NO

ADMINISTRATION BUILDINGS



MISR LIFE INSURANCE CO

Project Data MISR LIFE INSURANCE is the largest life insurance company in Egypt, established in July 2010 the company is the product of the merger of the life insurance activities of the oldest and largest insurance companies in Egypt owned by the state being Misr Insurance Company, Al Chark Insurance Company, Al Ahlia Insurance Company & The Egyptian Reinsurance Company.

Location Alexandria, Egypt

Buildings Administration building in Alexandria

Field of Work Electro-Mechanical Consultant and design of:

- Fire Fighting system
- Fire Alarm

Supervision NO



MAJOREL - ONE KATTAMEYA – SITE

Project Data it is one of the main projects of Majorel company in Cairo. Majorel is an international service company, specializing in customer experience and business process outsourcing and more than 50,000 employees. It was formed in 2019 through the merger of the customer relationship management businesses of Bertelsmann and the Saham Group.

Location Cairo, Egypt

Buildings It is one of the main projects of Majorel Company in Cairo

Field of Work (Electro-Mechanical Consultant) and Supervision of

- Electrical systems, Light current systems
- Mechanical systems (HVAC, Plumbing, Firefighting)
- Special systems (Earthing system)

Supervision YES.

ADMINISTRATION BUILDINGS



MAJOREL - TWITCH – HANDING OVER SITE.

Project Data It is one of the main projects of Majorel company in Alexandria. Majorel is an international service company, specializing in customer experience and business process outsourcing and more than 50,000 employees. It was formed in 2019 through the merger of the customer relationship management businesses of Bertelsmann and the Saham Group.

Location Alexandria, Egypt

Buildings It is one of the main projects of Majorel Company in Alexandria.

Field of Work (Electro-Mechanical Consultant) and hand over of

- Electrical systems, Light current systems
- Mechanical systems (HVAC, Plumbing, Firefighting)
- Special systems (Earthing system)

Supervision NO.



UC-1 TOWER NEW ADMINISTRATION BUILDING – NEW CAPITAL

Project Data It is a Commercial & administration building in New Capital.

Location New Capital, Egypt

Buildings administration building

Field of Work Electro-Mechanical Consultant and design of:

- Electrical systems, Light current systems
- Mechanical systems (HVAC, Plumbing, Firefighting)
- Special systems (Earthing system)

Supervision NO.

ADMINISTRATION BUILDINGS



UC-2 TOWER NEW ADMINISTRATION BUILDING – NEW CAPITAL

Project Data It is a Commercial & administration building in New Capital.

Location New Capital, Egypt

Buildings administration building

Field of Work Electro-Mechanical Consultant and design of:

- Electrical systems, Light current systems
- Mechanical systems (HVAC, Plumbing, Firefighting)
- Special systems (Earthing system)

Supervision NO.



GENIO COMPLEX TOWER – NEW CAPITAL

Project Data It is a Commercial & administration building in New Capital.

Location New Capital, Egypt

Buildings administration building

Field of Work Electro-Mechanical Consultant and design of:

- HVAC system.

Supervision NO.

ADMINISTRATION BUILDINGS

THE EGYPTIAN EXCHANGE EGX. IN NEW ADMINISTRATIVE CAPITAL, CAIRO, EGYPT.

Project Data It is a administration building in New Capital.

Location New Capital, Egypt

Buildings administration building

Field of Work Electro-Mechanical Consultant and design of:

- HVAC system.

Supervision NO.



ADMINISTRATION BUILDINGS



GOLDEN TOWER ADMINISTRATION BUILDING –NEW CAPITAL

Project Data It is a Commercial & administration building in New Capital.

Location New Capital, Egypt

Buildings administration building

Field of Work Electro-Mechanical Consultant and design of:

- Electrical systems, Light current systems
- Mechanical systems (HVAC, Plumbing, Firefighting)
- Special systems (Earthing system)

Supervision NO.



2 TOWER ADMINISTRATION BUILDING –NEW CAPITAL

Project Data It is a Commercial & administration building in New Capital.

Location New Capital, Egypt

Buildings administration building

Field of Work Electro-Mechanical Consultant and design of:

- Electrical systems, Light current systems
- Mechanical systems (HVAC, Plumbing, Firefighting)
- Special systems (Earthing system)

Supervision NO.

ADMINISTRATION BUILDINGS



SEQUOIE ADMINISTRATION BUILDING 5TH SETTLEMENT, CAIRO.

- Project Data** It is a Commercial & administration building in 5th settlement
- Location** 5TH Settlement, Cairo ,Egypt
- Buildings** administration building
- Field of Work** Electro-Mechanical Consultant and design of:
- Electrical systems, Light Current Systems.
 - Mechanical systems (HVAC, Firefighting).
- Supervision** NO.



ACCESS CONTROL FACILITY ADMINISTRATION BUILDING -KSA.

- Project Data** It is a Commercial & administration building in KSA
- Location** KSA, Saudi Arabia
- Buildings** administration building
- Field of Work** Electro-Mechanical Consultant and design of:
- Electrical systems, Light current systems
 - Mechanical systems (HVAC, Plumbing, Firefighting)
 - Special systems (Earthing system, Elevator, escalator, Solar system)
- Supervision** NO.

ADMINISTRATION BUILDINGS

HARMONY ADMINISTRATION BUILDING – MU2-95- NEW CAPITAL

Project Data It is a Commercial & administration building in New Capital.

Location New Capital, Egypt

Buildings administration building

Field of Work Electro-Mechanical Consultant and design of:

- Electrical systems, Light current systems
- Mechanical systems (HVAC, Plumbing, Firefighting)
- Special systems (Earthing system)

Supervision NO.



ADMINISTRATION BUILDINGS

ALWAHA DISTRICT ADMINISTRATION

Project Data	It is a Commercial & administration building in NASR CITY, EGYPT.
Location	NASR CITY, EGYPT
Buildings	It is a Commercial & administration building
Field of Work	<u>Electro-Mechanical Consultant and design of:</u>
Supervision	- Mechanical system (HVAC) NO.





MU2-55 THE TOWER ADMINISTRATION BUILDING

Project Data It is a Commercial & administration building in New Capital

Location New Capital, EGYPT

Buildings It is a Commercial & administration building

Field of Work Electro-Mechanical Consultant and design of:

- Electrical systems, Light current systems
- Mechanical systems (HVAC, plumbing, Firefighting)
- Special systems (Earthing system, Elevator, escalator, Solar system)

Supervision NO



CENTRAL POINT ADMINISTRATION BUILDING - NEW CAPITAL

Project Data It is a Commercial & administration building in New Capital

Location New Capital, EGYPT

Buildings It is a Commercial & administration building

Field of Work Electro-Mechanical Consultant and design of:

- Electrical systems, Light current systems
- Mechanical systems (HVAC, Plumbing, Firefighting)
- Special systems (Earthing system, Elevator, escalator, Solar system)

Supervision YES

RESIDENTIAL COMPOUND



RIVAN COMPOUND, THE NEW ADMINISTRATIVE CAPITAL

Project Data “ RIFAN ” is located on the Cairo , The new administrative capital , Egypt. The project is comprising of residential buildings with Parking, Hotel, walking area, swimming pool, children's play area, underground garage, clubhouse, mall with hypermarket, shops, restaurants, cafés, spa, gym and pharmacy.

Location The new administrative capital, Egypt

Buildings “RIFAN” is located on the Cairo,
The new administrative capital.

Field of Work **Electro-Mechanical Consultant and design of:**

- Electrical systems, Light current systems
- Mechanical systems (HVAC, Plumbing, Firefighting)
- Special systems (Earthing system).
- Infrastructure of (Electrical, light current, Firefighting, irrigation, water supply, drainage)
- Swimming pools and ponds

Supervision NO



AL KARMA MALL & RESIDENTIAL BUILDING

Project Data The project comprises of 37 residential buildings with a floor area 23500 m2, Consists of (Parking in Basement floor, MALL in Ground & First floor and 11 Floor typical residential building

Location Alexandria, Egypt

Buildings the project comprises of 37 residential buildings with A floor area 23500 m2.

Field of Work **Electro-Mechanical Consultant and design of:**

- Electrical systems, Light current systems
- Mechanical systems (HVAC, Plumbing, Firefighting)
- Special systems (Earthing system).
- Infrastructure of (Electrical, light current, Firefighting, irrigation, water supply, drainage)
- Swimming pools and ponds

Supervision YES

RESIDENTIAL COMPOUND



HELIOEYE COMPOUND, EGYPT

Project Data "HELIOEYE" is located on the Heliopolis in Egypt. The project comprises of 17 residential buildings consists of (Parking in Basement floor, MALL in Ground and 5 Floors typical residential building

Location	Heliopolis, Egypt
Buildings	"HELIOEYE" is located on the Heliopolis in Egypt.
Field of Work	<p>Electro-Mechanical Consultant and design of:</p> <ul style="list-style-type: none"> - Electrical systems, Light current systems - Mechanical systems (HVAC, Plumbing, Firefighting) - Special systems (Earthing system). - Infrastructure of (Electrical, light current, Firefighting, irrigation, water supply, drainage) - Swimming pools and ponds
Supervision	NO.



FLORIA L1-R8 SHOTS COMPOUND

Project Data FLORIA SHOTS is located on new capital, The new administrative capital, Egypt. The project is comprising of residential buildings with Parking, mall with hypermarket, shops, restaurants, cafés, spa, gym and pharmacy.

Location	The new administrative capital, Egypt
Buildings	FLORIA SHOTS is located in New capital, Egypt.
Field of Work	<p>Electro-Mechanical Consultant and design of:</p> <ul style="list-style-type: none"> - Electrical systems, Light current systems - Mechanical systems (HVAC, Plumbing, Firefighting) - Special systems (Earthing system). - Infrastructure of (Electrical, light current, Firefighting, irrigation, water supply, drainage) - Swimming pools and ponds
Supervision	YES

RESIDENTIAL COMPOUND



O-WEST ORASCOM 6TH OF OCTOBER BLOCK 1 & BLOCK 2.

Project Data O West is set over an area of 1,000 acres which boasts incredible natural topography. The iconic O West masterplan provides balanced and unique neighborhoods meticulously conceptualized into the fabric of the natural attributes of the O West site.

Location 6TH of October city, Egypt

Buildings O-WEST ORASCOM is located in 6TH of October, Egypt.

Field of Work **Electro-Mechanical Consultant and design of:**

- Electrical systems, Light current systems
- Mechanical systems (HVAC, Plumbing, Firefighting)
- Special systems (Earthing system).

Supervision NO.



RESIDENTIAL COMPOUND SULAIMANIA, RIYADH, KSA

Project Data The project comprises of the total area 10000 m2, distributed on separate villas and utilities area

Location Riyadh, KSA

Buildings the project comprises of the total area 10000 m2.

Field of Work **Electro-Mechanical Consultant and design of:**

- Electrical systems, Light current systems
- Mechanical systems (HVAC, Plumbing, Firefighting)
- Special systems (Earthing system).

Supervision NO.

RESIDENTIAL COMPOUND



ABDUL MOHSEN AL-HOKAIR & SONS GROUP APARTMENT BUILDING, AL BADIYA, KSA

Project Data The project comprises of the total area is about 20000 m2, distributed on distributed on separate villas and utilities area

Location Al Badiya, KSA

Buildings the project comprises of the total area is about 20000 m2.

Field of Work Electro-Mechanical Consultant and design of:

- Electrical systems, Light current systems
- Mechanical systems (HVAC, Plumbing, Firefighting)
- Special systems (Earthing system).
- Infrastructure of (Electrical, light current, Firefighting, irrigation, water supply, drainage)

Supervision NO.



AVENU COMPOUND

Project Data It is a residential compound .

Buildings the project comprises Villas of (Basement, Ground first, second, third roof floors)

Field of Work Electro-Mechanical Consultant and design of:

- Electrical systems, Light current systems
- Mechanical systems (HVAC, Plumbing, Firefighting)
- Special systems (Earthing system).
- Infrastructure of (Electrical, light current, Firefighting, irrigation, water supply, drainage)

Supervision NO.

RESIDENTIAL COMPOUND



ABU-ELOULA COMPOUND, RIYADH, KSA

Project Data	The project comprises Villas of land area 1600 m ²
Location	Riyadh , KSA
Buildings	the project comprises Villas of land area 1600 m ²
Field of Work	<p>Electro-Mechanical Consultant and design of:</p> <ul style="list-style-type: none"> - Electrical systems, Light current systems - Mechanical systems (HVAC, Plumbing, Firefighting) - Special systems (Earthing system). - Infrastructure of (Electrical, light current, Firefighting, irrigation, water supply, drainage)
Supervision	NO.



EMIRATES HEIGHTS

Project Data	the project comprises a village in the north coast
Location	North coast, Alexandria, Egypt
Buildings	the project comprises a village in the north coast
Field of Work	<p>Electro-Mechanical Consultant and design of:</p> <ul style="list-style-type: none"> - Mechanical systems (HVAC, Firefighting)
Supervision	NO

RESIDENTIAL COMPOUND



THE ICON RESIDENCE, 5th SETTLEMENT

Project Data "THE ICON Residence" is located on the Cairo, 5th settlement, Cairo, Egypt. The project is comprising of total area 30000 m² residential buildings consists of (Parking Hotel / walking area / swimming pool / children's play area / underground garage / clubhouse / mall with hypermarket, shops, restaurants, cafés, spa, gym & pharmacy).

Location 5th settlement, Cairo, Egypt

Buildings "THE ICON Residence" is located on The Cairo, 5th settlement.

Field of Work Electro-Mechanical Consultant and design of:
 - Mechanical systems (HVAC, Plumbing, Firefighting)

Supervision NO.



MASTER RESIDENCE COMPOUND

Project Data The project comprises Villas compound of total area 22600 m² consist of (Ground, first, second floors& roof)

Location Alexandria, Egypt.

Buildings the project comprises Villas compound of total area 22600 m² (Ground, first, second floors& roof)

Field of Work Electro-Mechanical Consultant and design of:
 - Electrical systems, Light current systems
 - Mechanical systems (HVAC, Plumbing, Firefighting)
 - Special systems (Earthing system).

Supervision NO.

RESIDENTIAL COMPOUND



SUN CAPITAL COMPOUND

Project Data SUN CAPITAL COMPOUND is located in 6th of October City. Sun Capital offers a wide range of studios, apartments, duplexes, twin houses and standalone villas for sale. Of the total 556 acres of Sun Capital, 60% will be residential areas and 40% will be commercial areas. Sun Capital will include international schools, universities, retail areas, a 24-acre open park, and a luxurious clubhouse overlooking stunning greenery.

Location 6TH OF OCTOBER, Egypt

Buildings SUN CAPITAL COMPOUND is located in 6th Of October City.

Field of Work (**Electro-Mechanical Consultant**) and design of:

- Irrigation, Storm Drainage, Drainage, Lighting.
- NO.

Supervision



PARCO BUILDING

Project Data PARCO BUILDING PROJECT is a Residential and Administration Building consisting of (2basement ,1 Ground, 1 mezzanine& 9 floors).

Location Alexandria, Egypt.

Buildings PARCO BUILDING is located in Alexandria, Egypt.

Field of Work

Electro-Mechanical Consultant and design of:

- Electrical systems, Light current systems
- Mechanical systems (HVAC, Plumbing, Firefighting)
- Special systems (Earthing system).

Supervision

YES.

RESIDENTIAL COMPOUND



AL NASR RESIDENCE - WEST GOLF

Project Data AL NASR RESIDENCE in 5th settlement.

Location 5th settlement, new Cairo

Buildings AL NASR RESIDENCE is 4 villas located
 In 5th settlement, new Cairo.

Field of Work Electro-Mechanical Consultant and design of:

- Electrical systems, Light current systems
- Mechanical systems (HVAC, Plumbing, Firefighting)
- Special systems (Earthing system).

Supervision NO.



90 AVENUE – 5TH SETTLEMENT, CAIRO, EGYPT

Project Data 90 AVENUE Compound in 5th settlement.

Location 5th settlement, new Cairo.

Buildings 90 AVENUE is located in 5th settlement, new Cairo.

Field of Work Electro-Mechanical Consultant and design of:

- Electrical systems, Light current systems
- Mechanical systems (Plumbing, Firefighting)
- Special systems (Earthing system).
- Infrastructure of (Electrical, light current, Firefighting, irrigation, water supply, drainage)

Supervision YES

RESIDENTIAL COMPOUND

AL NOURI COMPLEX– ARBIL- IRAQ

Project Data AI NOURI COMPLEX is historical Mosque Complex.

Location ARBIL- IRAQ.

Field of Work **Electro-Mechanical Consultant and design of:**

- Electrical systems, Light current systems
- Mechanical systems (HVAC, Plumbing, Firefighting)
- Special systems (Earthing system- waste water treatment plant).
- Infrastructure of (Electrical, light current, Firefighting, irrigation, water supply, drainage)

Supervision NO.



RESIDENTIAL BUILDING



ELSARH PROJECT, 5th SETTLEMENT

Project Data "El sarh" is project comprises of 3000 m² residential buildings.

Buildings "El sarh" in 5th settlement .

Field of Work Electro-Mechanical Consultant and design of:

- Electrical systems, Light current systems
- Mechanical systems (HVAC, Plumbing, Firefighting)
- Special systems (Earthing system).

Supervision NO.



JARA RESIDENCE

Project Data "JARA Residence" is located on the Alexandria in Egypt.

Buildings "JARA Residence" in Alexandria in Egypt.

Field of Work Electro-Mechanical Consultant and design of:

- Electrical systems, Light current systems
- Mechanical systems (HVAC, Plumbing, Firefighting)
- Special systems (Earthing system).

Supervision NO

RESIDENTIAL BUILDING



HAY ELSHOROUK

Project Data The project is 2000 m² comprises of 3 residential building of 10 floors in additional to a garage basements

Location Alexandria, Egypt

Buildings the project is 2000 m² comprises of 3 residential building of 10 floors garage basement

Field of Work Electro-Mechanical Consultant and design of:

- Electrical systems, Light current systems
- Mechanical systems (HVAC, Plumbing, Firefighting)
- Special systems (Earthing system).

Supervision NO.



ABDUL MOHSEN AL-HOKAIR & SONS GROUP APARTMENT BUILDING, GAMAHA ROAD (1&2), RIYADH, KSA

Project Data The project comprises of 5 residential floors, mezzanine (shops & swimming pool) and basement garage

Location Gamaha Road (1&2), Riyadh, KSA

Buildings the project comprises of 5 residential floors, Mezzanine, and shops.

Field of Work Electro-Mechanical Consultant and design of:

- Electrical systems, Light current systems
- Mechanical systems (HVAC, Plumbing, Firefighting)
- Special systems (Earthing system).

Supervision NO.

RESIDENTIAL BUILDING



TOURESCO (TOURISM & REAL ESTATE DEVELOPMENT CO.) OLAYA, RIYADH, KSA

Project Data	The project comprises of 5 floors (8 apartments each) and basement garage
Location	Olaya – Riyadh, KSA
Buildings	the project comprises of 5 floors (8 apartments each) and basement garage
Field of Work	<u>Electro-Mechanical Consultant and design of:</u> <ul style="list-style-type: none"> - Electrical systems, Light current systems - Mechanical systems (HVAC, Plumbing, Firefighting) - Special systems (Earthing system).
Supervision	NO.



SAN STEFANO BUILDING

Project Data	The project comprises of 11 floors of about 800 m ² for each floor, in additional to 2 basements
Location	Alexandria, Egypt
Buildings	the project comprises of 11 floors of about 800 m ² for each floor, 2 basements
Field of Work	<u>Electro-Mechanical Consultant and design of:</u> <ul style="list-style-type: none"> - Electrical systems, Light current systems - Mechanical systems (HVAC, Plumbing, Firefighting) - Special systems (Earthing system).
Supervision	NO.

RESIDENTIAL BUILDING



VILLA, RIYADH, KSA

Project Data	The project comprises 3 floor and land scape of a villa and administration office
Location	Riyadh, KSA
Buildings	the project comprises 3 floor and land scape of a villa and Administration office
Field of Work	<p><u>Electro-Mechanical Consultant and design of:</u></p> <ul style="list-style-type: none"> - Electrical systems, Light current systems - Mechanical systems (HVAC, Plumbing, Firefighting) - Special systems (Earthing system).
Supervision	NO.



REST HOUSE, RIYADH, KSA

Project Data	The project comprises 3 floor and land scape of a rest house and administration office
Location	Riyadh, KSA
Buildings	the project comprises 3 floor and land scape of a rest house and an administration office
Field of Work	<p><u>Electro-Mechanical Consultant and design of:</u></p> <ul style="list-style-type: none"> - Electrical systems, Light current systems - Mechanical systems (HVAC, Plumbing, Firefighting) - Special systems (Earthing system).
Supervision	NO.

RESIDENTIAL BUILDING



DORAT AL AROOS VILLA REST, JEDDAH, KSA

Project Data The project comprises a Villa of 1200 m²

Location Jeddah, KSA

Buildings the project comprises a Villa of 1200 m²

Field of Work Electro-Mechanical Consultant and design of:

- Electrical systems, Light current systems
- Mechanical systems (HVAC, Plumbing, Firefighting)
- Special systems (Earthing system).

Supervision NO



MR FAISAL GHALEB VILLA, RIYADH, KSA

Project Data The project comprises a Villa of land area 1600 m²

Location Riyadh , KSA

Buildings the project comprises a Villa of land area 1600 m²

Field of Work Electro-Mechanical Consultant and design of:

- Electrical systems, Light current systems
- Mechanical systems (HVAC, Plumbing, Firefighting)
- Special systems (Earthing system).

Supervision NO.

RESIDENTIAL BUILDING



HAMED FAYEZ VILLA, RIYADH, KSA

Project Data The project comprises a Villa of land area 1600 m²

Location Riyadh, KSA

Buildings the project comprises a Villa of land area 1600 m²

Field of Work Electro-Mechanical Consultant and design of:

- Electrical systems, Light current systems
- Mechanical systems (HVAC, Plumbing, Firefighting)
- Special systems (Earthing system).

Supervision NO.



MR ABULAZIZ AI-SHEIKH VILLA, RIYADH, KSA

Project Data The project comprises a Villa of land area 1000 m²

Location Riyadh, KSA

Buildings the project comprises a Villa of land area 1000 m²

Field of Work Electro-Mechanical Consultant and design of:

- Electrical systems, Light current systems
- Mechanical systems (HVAC, Plumbing, Firefighting)
- Special systems (Earthing system).

Supervision NO.

RESIDENTIAL BUILDING



EL KAYAL VILLA

Project Data	The project comprises a Villa of land area 570 m ²
Location	KSA
Buildings	the project comprises a Villa of land area 570 m ²
Field of Work	<p>Electro-Mechanical Consultant and design of:</p> <ul style="list-style-type: none"> - Electrical systems, Light current systems - Mechanical systems (HVAC, Plumbing, Firefighting) - Special systems (Earthing system).
Supervision	NO.



ABU-ELOULA PROJECT

Project Data	The project comprises Villas of land area 1600 m ²
Location	Riyadh , KSA
Buildings	the project comprises Villas of land area 1600 m ²
Field of Work	<p>Electro-Mechanical Consultant and design of:</p> <ul style="list-style-type: none"> - Electrical systems, Light current systems - Mechanical systems (HVAC, Plumbing, Firefighting) - Special systems (Earthing system). - Infrastructure of (Electrical, light current, Firefighting, irrigation, water supply, drainage)
Supervision	NO.

RESIDENTIAL BUILDING



ZEZINIA RESIDENCE

Project Data "Zezinia Residence" is located on the Alexandria In Egypt. The project comprises of 3 residential buildings consists of (Parking in 2 Basement floors and 11 Floors typical residential building

Location Alexandria, Egypt

Buildings "Zezinia Residence" is located on The Alexandria in Egypt.

Field of Work Electro-Mechanical Consultant and design of:
 - Mechanical systems (HVAC, Plumbing, Firefighting)

Supervision NO



RAKODA BUILDING

Project Data RAKODA RESIDENTIAL BUILDING is located In Alexandria, Egypt.

Location Alexandria, Egypt

Buildings RAKODA RESIDENTIAL BUILDING

Field of Work Electro-Mechanical Consultant and design of:
 - Electrical systems, Light current systems
 - Mechanical systems (HVAC, Plumbing, Firefighting)
 - Special systems (Earthing system).

Supervision NO

RESIDENTIAL BUILDING



PARCO BUILDING

Project Data PARCO BUILDING PROJECT is a Residential and Administration Building consisting of (2basement , 1 ground, 1 mezzanine& 9 floors).

Location Alexandria, Egypt
Buildings PARCO BUILDING is located in Alexandria, Egypt.

Field of Work **Electro-Mechanical Consultant and design of:**

- Electrical systems, Light current systems
- Mechanical systems (HVAC, Plumbing, Firefighting)
- Special systems (Earthing system).

Supervision YES.



ALAMEIN TOWERS (NEW ALAMEIN CITY)

Project Data The project comprises of total area 30790 m2, of the tower Consists of (Upper Ground & Lower Ground and 42 Floor typical) distributed in Residential, commercial and Entertainment buildings

Location New City Alamein, Egypt

Buildings The project comprises of total area 30790 m2.

Field of Work **(Electro-Mechanical contractor Consultant)** and

- Electrical systems, Light current systems
- Mechanical systems (HVAC, Plumbing, Firefighting)

Supervision NO.

RESIDENTIAL BUILDING



SGH -STAFF HOUSING BUILDING, ALEXANDRIA.

Project Data SGH-staff housing building in Alexandria.

Location Alexandria, Egypt

Field of Work Electro-Mechanical Consultant and design of:

- Electrical systems, Light current systems
- Mechanical systems (HVAC, Plumbing, Firefighting)
- Tendering services.

Supervision NO



LAKE VIEW BUILDINGS, 5TH SETTLEMENT, NEW CAIRO, EGYPT

Project Data LAKE VIEW BUILDINGS is located in 5th Settlement, new Cairo.

Location New Cairo , Egypt

Field of Work (Electro-Mechanical contractor Consultant) and

- Infrastructure of Electrical systems, Light current systems
- Infrastructure of Mechanical systems (Plumbing, Firefighting)
- Infrastructure of Storm system, irrigation system.
- Landscape Lighting

Supervision NO.

RESIDENTIAL BUILDING



MURIA VILLA – OMAN

Project Data	MURIA VILLA
Location	Oman
Field of Work	<u>Electro-Mechanical Consultant and design of:</u> <ul style="list-style-type: none">- Electrical systems, Light current systems- Mechanical systems (HVAC, Plumbing, Firefighting)- Swimming pool
Supervision	NO

EDUCATIONAL BUILDINGS



ALAMEIN UNIVERSITY (NEW CITY ALAMEIN)

Project Data The project comprises of total area 30790 m2, of the tower Consists of (Upper Ground & Lower Ground and 42 Floor typical) distributed in Residential, commercial and Entertainment buildings.

Location New City Alamein, Egypt.

Buildings The project comprises 4 faculties.

Field of Work (Electro-Mechanical Contractor Consultant and the following:

- Electrical systems, Light current systems
- Mechanical systems (HVAC, Plumbing, Firefighting)
- Special systems (Earthing system).

Supervision NO



SMART INTERNATIONAL SCHOOL

Project Data The project comprises one of the new categories of schools in Egypt as a biggest international school in Alexandria, Egypt

Location Alexandria, Egypt.

Buildings the biggest international school in Alexandria.

Field of Work Electro-Mechanical Consultant and design of:

- Electrical systems, Light current systems
- Mechanical systems (HVAC, Plumbing, Firefighting)
- Special systems (Earthing system).

Supervision YES.

EDUCATIONAL BUILDINGS



SPHINKX UNIVERSITY - FACULTY OF (PHARMACY - DENTISTRY- PHYSICAL THERAPY-ENGINEERING)

Project Data SPHINKX UNIVERSITY is one of the newest universities in Egypt which consists of:

- FACULTY OF PHARMACY
- FACULTY OF PHYSICAL THERAPY
- FACULTY OF DENTISTRY
- FACULTY OF ENGINEERING
- FACULTY OF MEDICEN

Location Assuit, Egypt.

Buildings Sphinx university is one of the newest universities In ASSUIT- Egypt.

Field of Work **Electro-Mechanical Consultant and design of:**

- Electrical systems, Light current systems
- Mechanical systems (HVAC, Firefighting)

Supervision NO.



IVY STEM INTERNATIONAL SCHOOL

Project Data "IVY in partnership with US Harmony Schools offers a rigorous, Well-rounded education with a special emphasis on STEM (Science, Technology, Engineering, and Math) which is an interdisciplinary approach that was introduced in 2001 by scientific administrators at the U.S. National Science Foundation (NSF). This learning approach is when rigorous academic concepts are coupled with real-world lessons as students apply science, technology, engineering, and mathematics in a context that makes connections between school, community, work, and the global enterprise.

Buildings "IVY in partnership with US Harmony Schools offers a rigorous.

Field of Work **(Electro-Mechanical Consultant)** and design Review and design update of

- Electrical systems, Light current systems
- Mechanical systems (HVAC, Plumbing, Firefighting)
- Special systems (Earthing system).

Supervision YES.

EDUCATIONAL BUILDINGS



KING ABDULAZIZ UNIVERSITY- COLLEGE OF NURSING, JEDDAH, KINGDOM OF SAUDI ARABIA

Project Data The project comprises a new College of Nursing of an area of about 22000 m², in 3 floors

Location Jeddah, Kingdom of Saudi Arabia.

Buildings a new College of Nursing of an area of about 22000 m², in 3 floors

Field of Work Electro-Mechanical Consultant and design of:

- Electrical systems, Light current systems
- Mechanical systems (HVAC, Plumbing, Firefighting)
- Special systems (Earthing system).

Supervision NO



ALEXANDRIA UNIVERSITY ADMINISTRATION BUILDING

Project Data The project comprises the main administration building Of Alexandria University.

Location Alexandria, Egypt

Buildings The project comprises the main administration building Of Alexandria University.

Field of Work Electro-Mechanical Consultant and design of:

- Fire Fighting
- Fire Alarm

Supervision YES

EDUCATIONAL BUILDINGS



FACULTY OF PHYSICAL EDUCATION FOR GIRLS

Project Data	The project comprises of the main GYM classroom
Location	Alexandria, Egypt.
Buildings	the main GYM classroom
Field of Work	<u>Electro-Mechanical Consultant and design of:</u>
	- HVAC
Supervision	NO



GOETHE INSTITUTE, EGYPT, DOKKI DISTRICT

Project Data	“Goethe institute” is located on Dokki District, Cairo, (850 m2) a cultural institute working in the whole world governed by the German government, Enhancement of German Language learning.
Location	Egypt
Buildings	Total Area (850 m2) a cultural institute working In the whole world.
Field of Work	<u>Electro-Mechanical Consultant and design of:</u>
	- Plumping System.
Supervision	NO.

EDUCATIONAL BUILDINGS



EGYPT-JAPAN UNIVERSITY OF SCIENCE AND TECHNOLOGY, BORG EL ARAB

Project Data	E-JUST was established in 2009, based on the agreement between the Egypt And the Japanese governments.
Location	Borg El Arab, Alexandria, Egypt.
Buildings	E-JUST was established in 2009
Field of Work	<u>(Electro-Mechanical Consultant)</u> and <ul style="list-style-type: none"> - Thermal stress analysis for the stack including sections Supports in the duct of the chimney inside the Chiller Room. - Fire Fighting
Supervision	YES.



DON BOSCO ITALIAN TECHNICAL HIGH SCHOOL

Project Data	Don Bosco is an Italian Technical high school abroad. They provide a degree recognized by the Italian Ministry of Education.
Location	Cairo, Egypt.
Buildings	Don Bosco is an Italian Technical high school abroad.
Field of Work	<u>Electro-Mechanical Consultant and design of:</u> <ul style="list-style-type: none"> - Firefighting System.
Supervision	YES.

EDUCATIONAL BUILDINGS



LAHOOT FACULTY (1ST FLOOR DEVELOPMENT) CAIRO , EGYPT.

Project Data LAHOOT FACULTY (1st Floor Development), CAIRO

Location Cairo, Egypt.

Buildings (1st Floor Development), CAIRO

Field of Work (Electro-Mechanical Consultant) and

- HVAC system.
- Lighting system.
- Single Line Diagram for Electrical Panels.

Supervision YES.



DELTA UNIVERSITY - FACULTY OF NURSING, MANSOURA EGYPT

Project Data it is one of the newest universities in Mansoura, Egypt.

Location Mansoura, Egypt.

Buildings Mansoura, Egypt.

Field of Work Electro-Mechanical Consultant and design of:

- Mechanical systems (HVAC, Firefighting system)

Supervision NO

EDUCATIONAL BUILDINGS

EL SALAM SCHOOL, HURGHADA, EGYPT.

Project Data EL SALAM SCHOOL is located in Hurghada, Egypt.

Location Hurghada ,Egypt.

Buildings In Hurghada , Egypt .

Field of Work **(Electro-Mechanical Consultant)** and

- Electrical systems, Light current systems
- Mechanical systems (HVAC, Plumbing, Firefighting)

Supervision YES.



WADI EL NIL NIVERSITY – FAYOUM, EGYPT

Project Data a Private university located in Fayoum, EGYPT

Location Fayoum ,Egypt.

Buildings faculty buildings

Field of Work Electro-Mechanical Consultant and design of:
- Mechanical systems (Firefighting, HVAC)
- Electrical system (power system)
- Infra structure

Supervision NO.

PROF.DR. WALID ABDELGHAFAR

INFRASTRUCTURE



PHARMA BEACH RESORT, BALTIM

Project Data "Pharma beach RESORT" is located on the north Coast, Baltim, Kafr Elsheikh and considered as one Of the main tourist destinations in Kafr Elsheikh. The total area is about 300, 000 m²

Location Baltim, Kafr Elsheikh, Egypt

Buildings The total area is about 300, 000 m².

Field of Work Electro-Mechanical Consultant and design of:

- Electrical power
- Lighting network.
- Water supply network
- Sewage network.
- Irrigation system
- Firefighting system
- Waste water treatment.
- Desalination water station.

Supervision YES.



KHAMIS GARDEN COMPOUND, ABHA

Project Data "KHAMIS GARDEN" is located on Abha, Saudi Arabia. The project comprises of 50 residential buildings In additional to mall, shopping area, hotel, mosque And utility area. The total area is about 130000 m².

Location ABHA, Saudi Arabia.

Buildings "KHAMIS GARDEN" is located on Abha, Saudi Arabia.

Field of Work Electro-Mechanical Consultant and design of:

- Electrical power
- Lighting network.
- Water supply network
- Sewage network.
- Irrigation system
- Firefighting system

Supervision NO

INFRASTRUCTURE



RAYHANA COMPOUND

Project Data	The project comprises of 23 villa with swimming pools and utilities area
Location	Alexandria, Egypt
Buildings	The project comprises of 23 villa with swimming pools and utilities area
Field of Work	<u>Electro-Mechanical Consultant and design of:</u> - Electrical power - Sewage network.
Supervision	NO.



NATIONAL WATER COMPANY- RIYADH SAUDI ARABIA KINGDOM

Project Data	National Water Company (NWC), a Saudi joint stock company fully owned by the government, was established to provide water and wastewater treatment services in accordance with the latest international standards. The project includes the main pump station and water tanks for the Heteen area in Riyadh, KSA.
Location	Riyadh, Saudi Arabia Kingdom.
Buildings	it a Saudi joint stock company in Riyadh, KSA.
Field of Work	<u>(Electro-Mechanical Contractor Consultant)</u> and - Shop Drawing for Water supply network of water tanks. - Pump station, philosophy of operation - Hydraulic calculations - Stress analyses for the suction and delivery pipe lines.
Supervision	NO.

PORTS AND AIR PORTS



HAMRAWIEN PORT

Project Data Hamrawien Port is used in exporting phosphate raw material. The jetty consists of concrete blocks type berth with length 66.25m and width 31.25m at the western side and 53.45m at the eastern side and water depth 10.5m in front of the berth

Location Safaga Port, Egypt.

Buildings Hamrawien Port is used in exporting phosphate Raw material.

Field of Work **(Electro-Mechanical Contractor Consultant)** and

- Electro-Mechanical design for rehabilitation of existing system.
- Electrical systems, Light current systems
- Mechanical systems (HVAC, Plumbing, Firefighting)

Supervision NO



ALEXANDRIA PORT- QUAY 85/3

Project Data The project comprises Development of the old quay wall in Alexandria Port - whose length Was 450m.

Location ALEXANDRIA, Egypt.

Buildings The project to Development of the old quay wall in Alexandria Port

Field of Work **(Electro-Mechanical Contractor Consultant)** and

- Electrical systems, Light current systems
- Mechanical systems (HVAC, Plumbing, Firefighting)

Supervision YES

PORTS AND AIR PORTS

SAFAGA CATCHING PORT - SAFAGA PORT, EGYPT.

Project Data	SAFAGA CATCHING Port In safaga, Egypt.
Location	Safaga Port, Egypt.
Field of Work	(Electro-Mechanical Contractor Consultant) and <ul style="list-style-type: none">- Mechanical systems (HVAC, Plumbing, Firefighting)- Waste water treatment station.- Desalination station
Supervision	NO



PROF.DR. WALID ABDELGHAFFAR

PORTS AND AIR PORTS



KADMAR GROUP (ADMINISTRATION LOGISTIC BUILDINGS & STORAGE) FREE ZONE EL SOKHNA

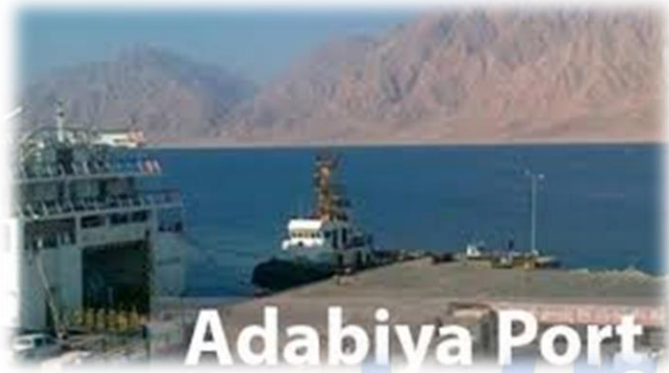
Project Data	KADMAR Group was established in the early 1983 as A shipping Agency. The project includes administration building, main store, workshops And utilities building.
Location	Free Zone El Sokhna, Egypt.
Buildings	The project includes administration building, Main store, and workshops, utilities building.
Field of Work	(Electro-Mechanical Contractor Consultant) and <ul style="list-style-type: none"> - Electrical systems, Light current systems - Mechanical systems (HVAC, Plumbing, Firefighting)
Supervision	NO.



ALEXANDRIA CONTAINER & CARGO HANDLING COMPANY

Project Data	The project comprises the main container Terminal equipment.
Location	Alexandria, Egypt.
Buildings	The project comprises the main container Terminal equipment.
Field of Work	(Electro-Mechanical Consultant) and <ul style="list-style-type: none"> - the tender documents for 2 spiders 3 handling cranes, - the tender documents for 3 masts, the tender documents for gantry cranes - The tender documents for T.L.T cranes.
Supervision	NO.

PORTS AND AIR PORTS



ADABIYA PORT , COAL STORE , ARABIYA PORT

Project Data	The project is a coal store of 5000 m2
Location	Arabiya port, Suez, Egypt
Buildings	The project is a coal store of 5000 m2
Field of Work	(Electro-Mechanical Consultant) and <ul style="list-style-type: none"> - Firefighting - Fire alarm system
Supervision	NO.



HABATA AIR PORT, EGYPT.

Project Data	The project is the Electro-Mechanical work for HABATA airport
Location	Egypt
Buildings	HABATA airport
Field of Work	(Contractor Electro-Mechanical Consultant) and <ul style="list-style-type: none"> - Electrical systems, Light current systems - Mechanical systems (HVAC, Plumbing, Firefighting) - Design review for Electro Mechanical works of (HABATA simulator, HABATA Hangar Building)
Supervision	NO.

PORTS AND AIR PORTS



SALHIA AIR PORT, EGYPT.

Project Data The project is the Electro-Mechanical design Review works for SALHIA Fuel and engine building.

Location Egypt

Buildings SALHIA Fuel and Engine building.

Field of Work (Contractor Electro-Mechanical Consultant) design Review of Electromechanical works.

Supervision NO.



KATAMIYA AIR PORT, EGYPT.

Project Data The project is the Electro-Mechanical design Review works for KATAMIYA airport simulator.

Location Egypt

Buildings KATAMIYA Simulator.

Field of Work (Contractor Electro-Mechanical Consultant) design Review of Electromechanical works

Supervision NO.

PORTS AND AIR PORTS



ABO ZNIMA PORT - SOUTH SINAIA, EGYPT.

Project Data ABO ZNIMA PORT - SOUTH SINAIA

Location IN SOUTH SINAI, Egypt

Field of Work **(Electro-Mechanical Consultant)** and design of :

- Mechanical systems (HVAC, Plumbing, Firefighting)
- Electrical systems (Electrical Power, Light current, External Lighting).
- Infrastructure design

Supervision NO.



SAVOLA QUENCH IN JEDDAH ISLAMIC PORT, JEDDAH, SAUDI ARABIA

Project Data SAVOLA Quench In Jeddah Islamic Port

Location JEDDAH

Field of Work **(Electro-Mechanical Consultant)** and design of

- Mechanical systems (HVAC, Firefighting)
- Electrical systems (Electrical Power, Light current, Earthing)

Supervision NO.

SPORTING CLUBS



SPORTING CLUB – TERRACE BUILDING

Project Data	The project comprises a new kid's area with all Required facilities.
Location	Alexandria, Egypt
Buildings	the project comprises a new kid's area with all Required facilities.
Field of Work	(Electro-Mechanical Consultant) and design of <ul style="list-style-type: none"> - Plumbing system - Storm system - Fire Fighting
Supervision	YES



LAGON CLUB

Project Data	The project is considered one of the biggest social and Sportive clubs in Alexandria. It is renewed for new 30 years
Location	Alexandria, Egypt
Buildings	The project is considered one of the social and sportive Clubs in Alexandria.
Field of Work	Electro-Mechanical Consultant and design of: <ul style="list-style-type: none"> - Electrical systems, Light current systems - Mechanical systems (HVAC, Plumbing, Firefighting) - Special systems (Earthing system). - Infrastructure of (Electrical, light current, Firefighting, irrigation, water supply, drainage)
Supervision	YES.

SPORTING CLUBS



RIO CLUB

Project Data	The project is considered one of the biggest social and sportive clubs in Alexandria
Location	Alexandria, Egypt
Buildings	The project is considered one of the biggest social and sportive clubs in Alexandria
Field of Work	Electro-Mechanical Consultant and design of: <ul style="list-style-type: none"> - Electrical systems, Light current systems - Mechanical systems (HVAC, Plumbing, Firefighting) - Special systems (Earthing system). - Infrastructure of (Electrical, light current, Firefighting, irrigation, water supply, drainage)
Supervision	YES.



COVERED SPORTING HALL (4500 PERSON)

Project Data	It is the one of biggest sporting hall in Egypt, It prepared for the world Cup 2024 for hand ball.
Location	6 th October, Egypt
Buildings	it is the one of biggest sporting hall I n Egypt,
Field of Work	(Electro-Mechanical Consultant) and design of - HVAC system design
Supervision	YES.

SPORTING CLUBS

COVERED SPORTING HALL, SOHAG, EGYPT

Project Data it is the one of biggest sporting hall I n Egypt

Location SOHAG UNIVERSITY, SOHAG, EGYPT

Buildings the sporting hall and all related buildings and utilities

Field of Work Electro-Mechanical Consultant and design of:
- Mechanical systems (HVAC)

Supervision NO





THE EGYPTIAN PETROCHEMICALS HOLDING COMPANY (ECHEM) & NATIONAL RESEARCH CENTER NOVEL TECHNIQUE FOR PRODUCTION OF STYRENE EMULSION

Project Data

The Egyptian Petrochemical Company and the National Research Center are planning to build A semi-commercial plant to produce 10 KTA styrene-acrylic emulsion.

Location

EGYPT

Buildings

The Egyptian Petrochemical Co. produce 10 KTA styrene-acrylic emulsion.

Field of Work

Electro-Mechanical Consultant and design of:

- Process flow diagram (include material and heat balance.
- Heat balance of specific case using simulation program (HYSYS),
- Piping and instrumentation diagram, Piping hydraulic calculation report,
- Process and mechanical equipment data sheets (for each equipment).
- Instruments Process, instrumentation data sheets.
- vent and drain philosophy, Process equipment list, cause
- effect chart, Work shop drawing, including WBS and PQR, Equipment layout
- (showing equipment layout, orientation, piping routing, piping support
- Arrangement, electrical cable routing layout etc...), Electrical equipment.
- electrical load list, Design and issue field instrument layout, issue loop

Supervision

YES.

OIL& GAS PLANTS



ALEXANDRIA CO. FOR PETROLEUM ADDITIVES (ACPA), WADI EL KAMAR

Project Data ACPA (Alexandria Company for petroleum additives) is one of the largest petroleum company in Egypt. The project is designing a biodiesel production unit in the company facility in Alexandria.

Location Wadi El Kamar, Alexandria, Egypt

Buildings ACPA (Alexandria Company for petroleum additives) Is located in Alexandria.

Field of Work Electro-Mechanical Consultant and design of:

- Process flow diagram, Process description, Piping and instrumentation diagram,
- Piping hydraulic calculation report, Process and mechanical equipment data.
- Instruments Process, instrumentation datasheet,
- Process equipment list, Work shop drawing, including WBS and PQR,
- Equipment layout (showing equipment layout, orientation, piping routing,
- Piping support arrangement, electrical cable routing layout etc...),
- Electrical equipment list, Design and issue field instrument layout,
- Electrical bulk material MTO, piping MTO and piping designation table.

Supervision NO



NALCO-CHAMPION ECOLAB, FREE ZONE

Project Data Nalco-Champion teamed with Accenture and Microsoft to launch a digital platform that provides downstream refinery and petrochemical customers with insights to help predict and solve challenges across their assets

Location Free Zone, Alexandria, EGYPT

Buildings Nalco-Champion is located in Alexandria.

Field of Work Electro-Mechanical Consultant and design of:

- Electrical systems, Light current systems
- Mechanical systems (HVAC, Plumbing, Firefighting)
- Special systems (Earthing system).

Supervision YES

OIL& GAS PLANTS



MANTRAC-UNATRAC

Project Data The project is an Electrical Power Station for Kirkuk Cement Factory in Iraq

Location Kirkuk, Iraq

Buildings the project is an Electrical Power Station for Kirkuk Cement Factory in Iraq

Field of Work Electro-Mechanical Consultant and design of:

- Design review for fuel systems; lube oil system; thermal oil system.
- Cooling system; drainage system; engines air intake system.
- Engine air starting system and engines exhaust system.

Supervision NO.



EXXON MOBIL GLOBAL PETROLEUM CO

Project Data The project comprises of group of (11) storage tanks with different capacities filled with liquid fuel including the filling pumps that receive products from different places outside the terminal and also transfer pumps that transfer the products between the tanks

Location Alexandria, Egypt

Buildings the project comprises of group of (11) storage tanks.

Field of Work Electro-Mechanical Consultant and design of:

- The engineering evaluation of the Fire Fighting & Fire Alarm Systems.
-

Supervision NO.

OIL & GAS PLANTS



MIDTAP PETROLEUM CO

Project Data	The project comprises of a garage, electrical rooms, generator room and transformer rooms in Cairo and Alexandria sites
Location	Cairo, Egypt
Buildings	the project comprises of a garage, electrical rooms, generator room transformer rooms in Cairo and Alexandria sites
Field of Work	<u>Electro-Mechanical Consultant and design of:</u> <ul style="list-style-type: none"> - Fire Fighting - Fire Alarm systems.
Supervision	YES.



MISR PETROLEUM

Project Data	The project comprises of the total area 13600 m2.
Location	EGYPT
Buildings	the project comprises of the total area 13600 m2.
Field of Work	<u>Electro-Mechanical Consultant and design of:</u> <ul style="list-style-type: none"> - Fire Fighting - Fire Alarm.
Supervision	YES.

OIL & GAS PLANTS



EGYPTIAN PETROCHEMICALS COMPANY (EPC)

Project Data EPC is one of the Egyptian petroleum sector companies and a subsidiary of the Egyptian Holding Company for Petrochemicals Company, It is the first petrochemical company produces of PVC originating in the Arab Republic of Egypt

Location Alexandria , EGYPT

Buildings EPC is one of the Egyptian petroleum sector companies

Field of Work (Electro-Mechanical Consultant) and design review of

- HVAC Design Review

Supervision YES.



EGYPTIAN LNG

Project Data LNG is Egypt's largest liquefied natural gas joint venture comprising of bath local shareholders, such as the Egyptian general petroleum corporation ("EGPC"), Egyptian natural gas holding company ("EGAS") and foreign shareholders, such as BG Group plc, PETRONAS and Engine (Gaz de Suez).

Location EGYPT

Buildings LNG is Egypt's largest liquefied natural gas joint Venture comprising co.

Field of Work Electro-Mechanical Consultant and design of:

- Complete hydraulic carts for maintenance work.
- 4 certificates According to BS EN 280 to make sure that final product
- Final comply with EN 280. Deliver third party approved by ELNG.
- To get witness load test and the required QA/QC Certification.

Supervision NO.

OIL& GAS PLANTS



GASCO (EGYPTIAN NATURAL GAS CO)

Project Data GASCO is one of the largest natural gas company In Egypt. The project includes production Area, administration area and the utilities area.

Location Al Amriya, Alexandria, EGYPT

Buildings (GASCO) Al amriya .

Field of Work Electro-Mechanical Consultant and design of:

- Fire Fighting
- Fire alarm.

Supervision YES.



GASCO (ADMINISTRATION BUILDING

Project Data The project includes the GASCO administration Building in 10th or Ramadan with the other utility buildings.

Location 10th of Ramadan, EGYPT

Buildings The GASCO administration building in 10th or Ramadan with the other utility

Field of Work Electro-Mechanical Consultant and design of:

- Fire Fighting
- Fire alarm.

Supervision YES

OIL& GAS PLANTS



GASCO (ADMINISTRATION BUILDING DAMIETTA).

Project Data	The project includes the GASCO administration building In Damietta.
Location	Damietta, EGYPT
Buildings	The project includes the GASCO administration Building in Damietta.
Field of Work	<u>Electro-Mechanical Consultant and design of:</u> <ul style="list-style-type: none"> - Fire Fighting - Fire alarm.
Supervision	YES.



DAHSOUR COMPRESSOR STATION

Project Data	the station is responsible of pressurizing The natural gas to Upper Egypt area.
Location	Dahshour, EGYPT
Buildings	the station is responsible of pressurizing the natural gas to Upper Egypt
Field of Work	<u>Electro-Mechanical Consultant and design of:</u> <ul style="list-style-type: none"> - Fire Fighting - Fire alarm.
Supervision	YES.

ASSIUT NATIONAL OIL PROCESSING COMPANY (ANOPC) .

Project Data Assiut National Oil Processing Company (ANOPC) new project

Location Assiut, EGYPT

Buildings ANOPC new facilities .

Field of Work Electro-Mechanical Consultant and design of:
- HVAC System.

Supervision NO.



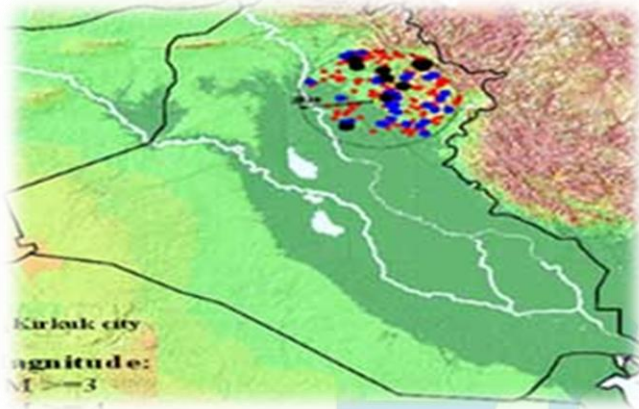
ANOPC

ASSIUT NATIONAL OIL PROCESSING COMPANY

شركة أسيوط الوطنية لتصنيع البترول

PROF.DR. WALID ABDELGHAFAR

POWER PLANTS



KIRKUK CEMENT FACTORY POWER STATION

Project Data	The project is an Electrical Power Station for Kirkuk Cement Factory in Iraq
Location	Kirkuk, Iraq
Buildings	the project is an Electrical Power Station for Kirkuk Cement Factory in Iraq
Field of Work	<p><u>Electro-Mechanical Consultant and design of:</u></p> <ul style="list-style-type: none"> - Electrical systems, Light current systems - Mechanical systems (HVAC, Plumbing, Firefighting) - Special systems (Earthing system).
Supervision	NO.



BURULLUS COMBINED CYCLE POWER PLANT – 4800 MW, BURULLUS

Project Data	The project comprises a combined cycle power plant Of 4800 MW. The general consultant is PGESCO, The contractor is ORASCOM, the owner is SIEMENS
Location	Burullus, Egypt
Buildings	The project comprises a combined cycle Power plant of 4800 MW.
Field of Work	<p><u>Electro-Mechanical Consultant and design and shop drawings of:</u></p> <ul style="list-style-type: none"> - Electrical systems, Light current systems
Supervision	NO

POWER PLANTS

NEW CAPITAL COMBINED CYCLE POWER PLANT \4800 MW

Project Data

The project comprises a combined cycle power Plant of 4800 MW. The general consultant is PGESCo, The contractor is ORASCOM, and the owner is SIEMENS

Location

Cairo, Egypt

Buildings

The project comprises a combined cycle Power plant of 4800 MW.

Field of Work

Electro-Mechanical Consultant and design and shop drawings of:

- Electrical systems, Light current systems

Supervision

NO



WATER AND WASTE WATER TREATMENT PLANTS



SAKR GROUP FOR FOOD INDUSTRIES

Project Data	The project comprises the 7 factories which has Employs over 1500 people.
Location	Alexandria, Egypt
Buildings	The project comprises the 7 factories which Has employs over 1500 people.
Field of Work	<u>Electro-Mechanical Consultant and design of:</u> <ul style="list-style-type: none"> - water treatment station - Industrial waste water treatment station
Supervision	YES



KCG TEXTILE EGYPT

Project Data	K.C.G Textile Egypt S.A. was established at 2007 and started production at 2008 for home textile business
Location	Industrial zone, South A6. 10th of Ramadan City. Egypt.
Buildings	K.C.G Textile Egypt S.A. was established at 2007.
Field of Work	<u>Electro-Mechanical Consultant and design of:</u> <ul style="list-style-type: none"> - Industrial waste water treatment
Supervision	YES.

WATER AND WASTE WATER TREATMENT PLANTS



PHARMA BEACH RESORT

- Project Data** "Pharma beach RESORT" is located on the north Coast, Baltim, Kafr Elsheikh and considered as one Of the main tourist destinations in Kafr Elsheikh. The total area is about 300, 000 m²
- Location** Baltim, Kafr Elsheikh, Egypt
- Buildings** The total area is about 300, 000 m².
- Field of Work** Electro-Mechanical Consultant and design of:
- Desalination water treatment station
 - Waste water treatment station
- Supervision** YES.



IPPCO FACTORY, BORG ELARAB

- Project Data** The project comprises a new factory for eggs production
- Location** Borg ElArab, Alexandria, Egypt
- Buildings** the project comprises a new factory for eggs production
- Field of Work** Electro-Mechanical Consultant and design of:
- Industrial waste water treatment
 - Water treatment station
- Supervision** YES.

WATER AND WASTE WATER TREATMENT PLANTS



GULF OF SUEZ DEVELOPMENT COMPANY

Project Data	Industrial Waste water treatment of 1500 m ³ /day
Location	Suez, Egypt
Buildings	Industrial Waste water treatment of 1500 m ³ /day
Field of Work	<u>Electro-Mechanical Consultant and design of:</u> - Electro-Mechanical work.
Supervision	NO.



CAIRO OIL REFINING COMPANY (CORC),

Project Data	CORC has two main wastewater treatment plants with a capacity of 350 m ³ /hr. each to treat wastewater and discharge their effluents into Ismailia canal. Each WWTP consists of an API separator followed by DAF unit. the company needs to rehabilitate them
Location	Cairo, Egypt
Buildings	CORC has two main wastewater treatment plants.
Field of Work	<u>(Electro-Mechanical Consultant)</u> and - Electro-Mechanicals evaluations and rehabilitation
Supervision	NO.

WATER AND WASTE WATER TREATMENT PLANTS



MARSEILIA BEACH 4 DESALINATION STATION

Project Data	The project comprises of total area 546,000 m ² , Located 124.5 km west of Alexandria. The water desalination unit is 1000 m ³ /day RO system
Location	Alexandria, Egypt
Buildings	The project comprises a desalination station of 2500 m ³ /day
Field of Work	(Electro-Mechanical Consultant) and <ul style="list-style-type: none"> - The delivery, test and commissioning of the second unit of 1000 m³/ day
Supervision	NO.



ULTIMATE PHARMA FACTORY

Project Data	The project comprises of total area 17000 m ² which is specialized in in production of pharmaceutical sterile products
Location	Alexandria, Egypt
Buildings	the project comprises of total area 17000 m ² .
Field of Work	<u>Electro-Mechanical Consultant and design of:</u> <ul style="list-style-type: none"> - water treatment station - Industrial waste water treatment station
Supervision	YES.

WATER AND WASTE WATER TREATMENT PLANTS

VISTA MALL, MARINA, NORTH COAST, EGYPT.

Project Data	The project comprises of total area 10000 m2 which is a part of Marina.
Location	NORTH COAST, EGYPT
Field of Work	(Electro-Mechanical Consultant) - Waste water treatment station
Supervision	YES.



WATER AND WASTE WATER TREATMENT PLANTS

SIWA PLANT 6,12,13, SIWA, MATROUH, EGYPT.

Project Data The project comprises the 3 plants of SIWA

Location MATROUH, EGYPT

Field of Work Electro-Mechanical Consultant and design of:

- Firefighting system
- Fire Alarm

Supervision NO.



AUTOMOTIVE WORK SHOP



SKODA SERVICE CENTER (CARFIX)

Project Data

The project is a show room, administration building of two floors, waiting area, parking area, stores, workshops for mechanical, electrical, and body work.

Location

Alexandria, Egypt

Buildings

show room, administration building of two floors, waiting area, parking area, stores, workshops for Mechanical, electrical, and body work.

Field of Work

Electro-Mechanical Consultant and design of:

- Service center layout
- Electrical systems, Light current systems
- Mechanical systems (HVAC, Plumbing, Firefighting)
- Special systems (Earthing system, Exhaust system).
- Service center equipment's URS

Supervision

YES.



EGYAUTO (HYUNDAI) CAR SERVICE CENTER CAIRO

Project Data

The project comprises of an approved car service center For Hyundai Company including all maintenance process.

Location

Cairo, Egypt.

Buildings:

Car service center for Hyundai Company Including all maintenance process.

Field of Work

Electro-Mechanical Consultant and design of:

- Service center layout
- Electrical systems, Light current systems
- Mechanical systems (HVAC, Plumbing, Firefighting)
- Special systems (Earthing system, Exhaust system).
- Service center equipment's URS

Supervision

YES.

AUTOMOTIVE WORK SHOP



ELHOUSARY (SPERANZA) CAR SERVICE CENTER

Project Data The project comprises of an approved car service center For Speranza Company including all maintenance processes.

Location Damanhur- Behira – Egypt

Buildings car service center for Speranza Company Including all maintenance processes.

Field of Work Electro-Mechanical Consultant and design of:

- Service center layout
- Electrical systems, Light current systems
- Mechanical systems (HVAC, Plumbing, Firefighting)
- Special systems (Earthing system, Exhaust system).
- Service center equipment's URS

Supervision YES



SAWARY AL MADINA, AL MADINA

Project Data The project comprises of 750 m²

Location Al Madina, Saudi Arabia Kingdom

Buildings Total Area 750 m²

Field of Work Electro-Mechanical Consultant and design of:

- Electrical systems, Light current systems
- Mechanical systems (HVAC, Plumbing, Firefighting)

Supervision NO

AUTOMOTIVE WORK SHOP



MICAR MENA CAIRO

Project Data The project comprises of an approved car service center for Nissan Company including all maintenance process of 28450 m².
 The project is an administration building in Bahrein, The land area is 2625 m².

Location Bahrein

Buildings Car service center for Nissan Company including all maintenance process
 Total Area 28450 m²

Field of Work Electro-Mechanical Consultant and design of:

- Electrical systems, Light current systems
- Mechanical systems (HVAC, Plumbing, Firefighting)
- Special systems (Earthing system, Exhaust system).
- Service center equipment's URS

Supervision NO.



NISSAN CAR SERVICE CENTER

Project Data The project comprises three floors mall

Location Gharbia, Egypt

Buildings Three floors mall

Field of Work Electro-Mechanical Consultant and design of:

- Service center layout
- Electrical systems, Light current systems
- Mechanical systems (HVAC, Plumbing, Firefighting)
- Special systems (Earthing system, Exhaust system).
- Service center equipment's URS

Supervision NO

AUTOMOTIVE WORK SHOP

GARAGE OF ALEXANDRIA GOVERNOR

Project Data The project area of about 36000 m².

Location Alexandria, Egypt.

Buildings the project area of about 36000 m².

Field of Work Electro-Mechanical Consultant and design of:

- Firefighting
- Fire alarm design

Supervision YES.



SOLAR ENERGY

KCG TEXTILE EGYPT

Project Data

K.C.G Textile Egypt S.A. was established at 2007 and started production at 2008 for home textile business

Location

Industrial zone, South A6.
10th of Ramadan City. Egypt.

Buildings

K.C.G Textile Egypt S.A. was established at 2007.

Field of Work

Electro-Mechanical Consultant and design of:

- Solar energy 500 kW with connecting to the general electrical network.

Supervision

YES.



ENERGY MANAGEMENT



FIRSTGROUP CO. FOR INDUSTRIAL DEVELOPMENT S.A.E, ELOBOUR

Project Data	The project comprises a new factory called FIRST-STAR factory and is one of the biggest corrugated paper factory in Egypt
Location	EIObour, Cairo, Egypt
Buildings	a new factory called FIRST-STAR factory
Field of Work	<u>Electro-Mechanical Consultant and design of:</u> - Energy Management of the group including 7 factories.
Supervision	YES



SAKR GROUP FOR FOOD INDUSTRIES

Project Data	The project comprises the 7 factories which has Employs over 1500 people.
Location	Alexandria, Egypt
Buildings	The project comprises the 7 factories which has Employs over 1500 people.
Field of Work	<u>(Electro-Mechanical Consultant)</u> and design of - Energy Management of the group including 7 factories.
Supervision	YES

Sample of Design Review and Value Engineering Projects

→ ZAHA MALL, NEW CAPITAL, CAIRO - EGYPT (OWNER REPRESENTATIVE)

The client is HOME TOWN CO.

The consultant is SABBOUR CONSULTING.

→ ICON TRINITY COMPLES DOWNTOWN (ITC) MALL, NEW CAPITAL, CAIRO - EGYPT

The client is DAHAB DEVELOPMENT CO.

The consultant is YBA YASSER ELBELTAGY ARCHITECTS .

→ SMOUHA Medical Center, Alexandria – Egypt

The client is SAMA group CO. LTD

The consultant is Integrated Consultation Company ICC, Egypt.

→ Alexandria Global Hospital, Smouha, Alexandria, Egypt

The client is Global Hospital CO. LTD

The consultant is Engineering Consultants Group ECG, Egypt.

→ HAYAT ALEX, ALEXANDRIA, EGYPT

The client is Marseilia CO. LTD

The consultant is Engineering Consultants Group ECG, Egypt

→ AL FAYOUM INTERNATIONAL HOSPITAL, AL FAYOUM , EGYPT

The client is Al Fayoum Company for Medical Services

The General consultant is NOOR Consultants Engineering & Architecture

The Electro-Mechanical consultant is IDA Engineering

→ ELIT INTERNATIONAL HOSPITAL, RING ROAD, DOWNTOWN, ALEXANDRIA, EGYPT

The client is Elit Hospital CO. LTD

The consultant is The United Group for Consulting Engineering UGCE, Alexandria, Egypt.

→ EL KATAMEYA CLINIC HOSPITAL , 5TH SETTLEMENT, NEW CAIRO, CAIRO - EGYPT

The client is El Katameya Clinic hospital company

The consultant is BECT, Cairo, Egypt.

Sample of Engineering studies Projects

→ Egyptian Company for Trading & Industry- Alexandria, Egypt

Engineering and feasibility study of converting diesel fuel system for the steel heating furnaces to natural gas fuel system

→ Integrated Car Service Centre -Elkhartoom- Sudan

Feasibility study and design the integrated Car Service Centre to deal with 5 brands in 10000 m2 including the management system and the center organization chart.

→ Kobusch Packaging- Borg ElArab – Alexandria -Egypt

Evaluate the present energy situation and the best way to obtain the power supply.

→ Packline Company- ElObour- Cairo- Egypt

Planning of tractor assembly line

→ Arab Company for Medical Services- Gharbia- Egypt

Design of Children Incubators & Children Heating Device

→ New industrial Complex at El Nahda Area –Elamria- Alexandria

Design of the Natural Gas Network system

→ Alexandria 2032: General Strategic Plan for the City of Alexandria, Egypt

Responsible for the natural gas network in the project with AS&P International GmbH, Frankfurt am Main, as a local consultant

→ Egyptian starch and Glucose Manufacturing Company

Development of the processing Methods of the Egyptian starch and Glucose Manufacturing Company for the production of High quality starch Derivatives NRC, STC.Sub project

→ Abu-Qir for fertilizers and Chemical industries

Recovery of Urea and Derivatives from wastewater in Abu-Qir for fertilizers and Chemical industries, NRC, STC Subproject

→ ElNasr Steel pipes and Fittings Company-Galvanization plant in Ein-Helwan

Design of industrial wastewater treatment system for ElNasr Steel pipes and Fittings Company-Galvanization plant in Ein-Helwan

→ HORSE Rice Milling Co. Evaluation in Elobour City.

Factor evaluation including all equipment's and utility systems and operation control systems.

→ ELSALAM Company – HORSE Export& Import Company- Evaluation in Elobour City.

Factor evaluation including all equipment's and utility systems and operation control systems.

→ The NILE ENGINEERING Company (EAMCO)

PLES zrt Factory for wheels in HUNGARY evaluation to be transferred to EAMCO in Egypt. Machines and dies performance evaluation with recommended new machines and utilities for the factory better performance in EGYPT after transferring.

→ IBN ELBALAD Fire Report

Building firefighting system evaluation report.

→ PALMA RESORT- ELMONTAZAH

Hotel Building firefighting system evaluation report.

Project Management Projects

→ EGMED PHARMA FACTORY, ALEXANDRIA – EGYPT

IT is specialized in production of pharmaceutical products

→ AMECO PHARMA FACTORY, ALEXANDRIA – EGYPT

The project comprises of total area 3200 m2 which is specialized in production of pharmaceutical sterile products .

→ ULTIMATE PHARMA FACTORY, ALEXANDRIA – EGYPT

The project comprises of total area 17000 m2 which is specialized in production of pharmaceutical sterile products

→ FIRST-STAR CO. FOR INDUSTRIAL DEVELOPMENT S.A.E , ALOBOUR, CAIRO, EGYPT

The project comprises of total area m2 of a new factory for First Co. for industrial development S.A.E called FIRST CARTON 2; producing ton/month of corrugated paper. ProMEP design Scope is Electro-Mechanical design and supervision (lighting, power, telephone, data, CCTV, fire alarm, and access doors). ProMEP management scope is the turn key project includes Civil work, Structure work, Electro-Mechanical work, Machining work, starting and commissioning of the production lines.

→ LEVEN FACTORY, ALEXANDRIA – EGYPT

The project comprises of total area 2800 m2 which is specialized in production of Cream, Hair gel, and shampoo and hair oil.

→ EGYPTSAT FACTORY , ALOBOUR, CAIRO, EGYPT

The project comprises of total area 5000 m2 of a new factory for steel structure. ProMEP design Scope is Electro-Mechanical design and supervision (lighting, power, telephone, data, CCTV, fire alarm, and access doors). ProMEP management scope is the turn key project includes Civil work, Structure work, Electro-Mechanical work, Machining work, starting and commissioning of the production lines.

→ IPPCO FACTORY , BORG ALARAB , ALEXANDRIA, EGYPT

→ The project comprises of total area 4000 m2 of a new factory for eggs. ProMEP design Scope is Electro-Mechanical design and supervision. ProMEP management scope is the turn key project includes Civil work, Structure work, Electro-Mechanical work, Machining work, starting and commissioning of the production lines.

→ UGDC PORT SAID EXPORTING FACILITY, EGYPT

The project comprises one of UGDC PLOT for exporting facility. ProMEP scope of work is

firefighting and fire alarm system review according to the Egyptian code and civil defense report and Signage and Way-finding plan for the project.

→ UGDC DAMIETTA EXPORTING FACILITY, EGYPT

The project comprises one of UGDC PLOT for exporting facility. ProMEP scope of work is

firefighting and fire alarm system review according to the Egyptian code and civil defense report and Signage and Way-finding plan for the project.

ProMEP Partners







PROF.DR. WALID ABDELGHAFAR



PROF.DR. WALID ABDELGHAFAR





PROF.DR. WALID ABDELGHAFFAR